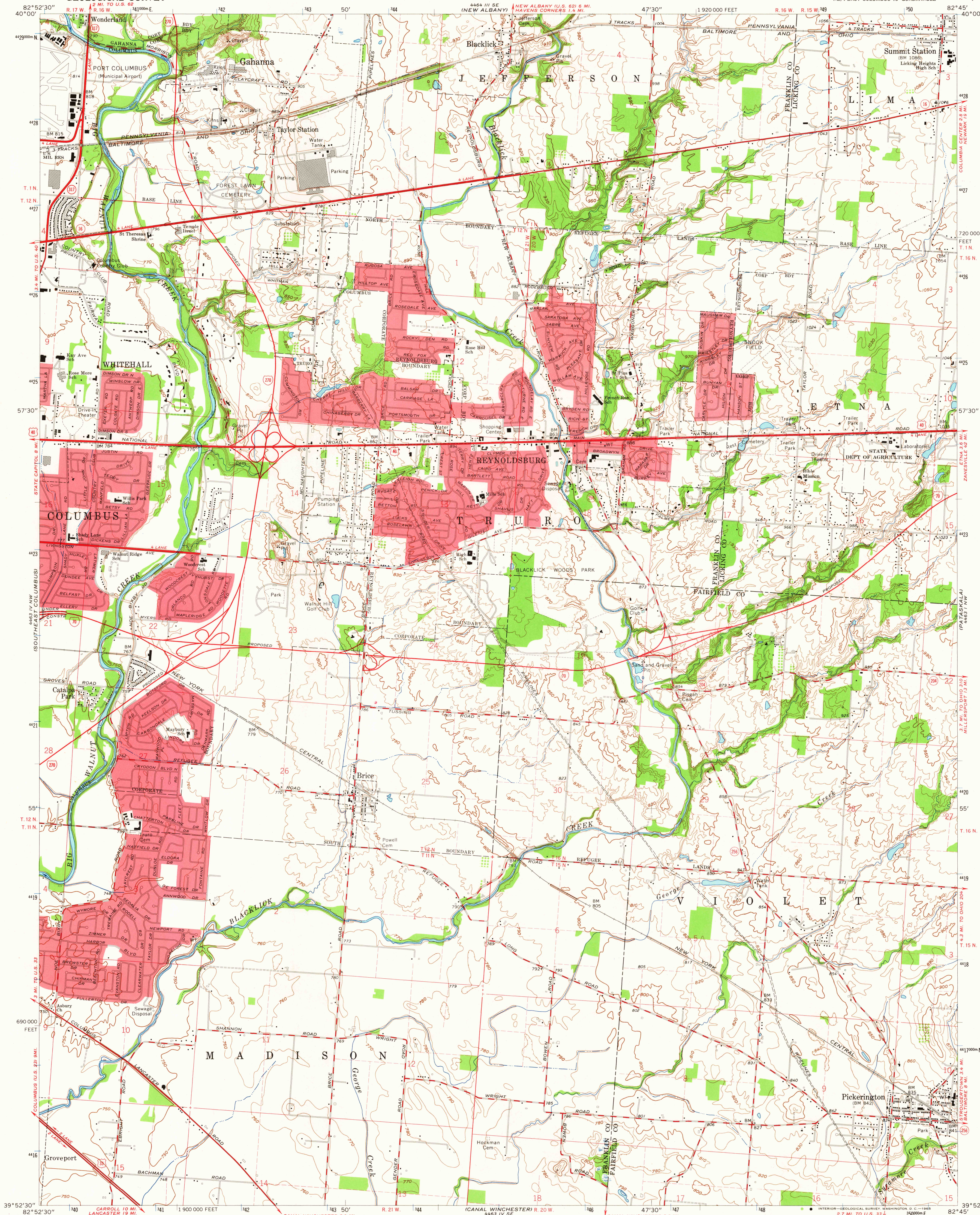
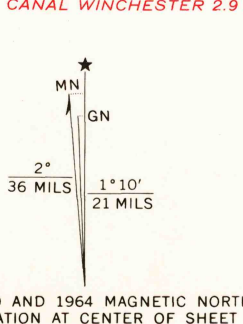


UNITED STATES
DEPARTMENT OF THE INTERIOR
GEOLOGICAL SURVEY

REYNOLDSBURG QUADRANGLE
OHIO
7.5 MINUTE SERIES (TOPOGRAPHIC)
NE/4 EAST COLUMBUS 15' QUADRANGLE



Mapped, edited, and published by the Geological Survey
Revised in cooperation with State of Ohio Agencies
Control by USGS, USC&GS, and City of Columbus
Topography by photogrammetric methods from aerial photographs
taken 1953 and planimetric surveys 1955. Revised 1964
Polyconic projection. 1927 North American datum
10,000-foot grid based on Ohio coordinate system, south zone
1000-meter Universal Transverse Mercator grid ticks, zone 17, shown in blue
Fine red dashed lines indicate selected fence and field lines where
generally visible on aerial photographs. This information is unchecked
Red tint indicates areas in which only landmark buildings are shown
Area north of the Base Line lies within the United States Military District
Land lines based on the Base Line of the United States Military District
Area south of the Base Line lies within Congress Lands east of
the Scioto River. Land lines based on the Ohio River Base



SCALE 1:24,000
CONTOUR INTERVAL 10 FEET
DATUM IS MEAN SEA LEVEL
THIS MAP COMPLIES WITH NATIONAL MAP ACCURACY STANDARDS
FOR SALE BY U.S. GEOLOGICAL SURVEY, WASHINGTON, D.C. 20242
A FOLDER DESCRIBING TOPOGRAPHIC MAPS AND SYMBOLS IS AVAILABLE ON REQUEST



ROAD CLASSIFICATION
Heavy-duty ——— Light-duty ———
Medium-duty ——— Unimproved dirt ———
Interstate Route U.S. Route State Route

REYNOLDSBURG, OHIO
NE/4 EAST COLUMBUS 15' QUADRANGLE
N3952.5—W8245.7/7.5
1964
AMS 4463 IV NE—SERIES V852

U.S.G.S.
FILE COPY
TOPOGRAPHIC DIVISION

NOV 1 6 1965

3050