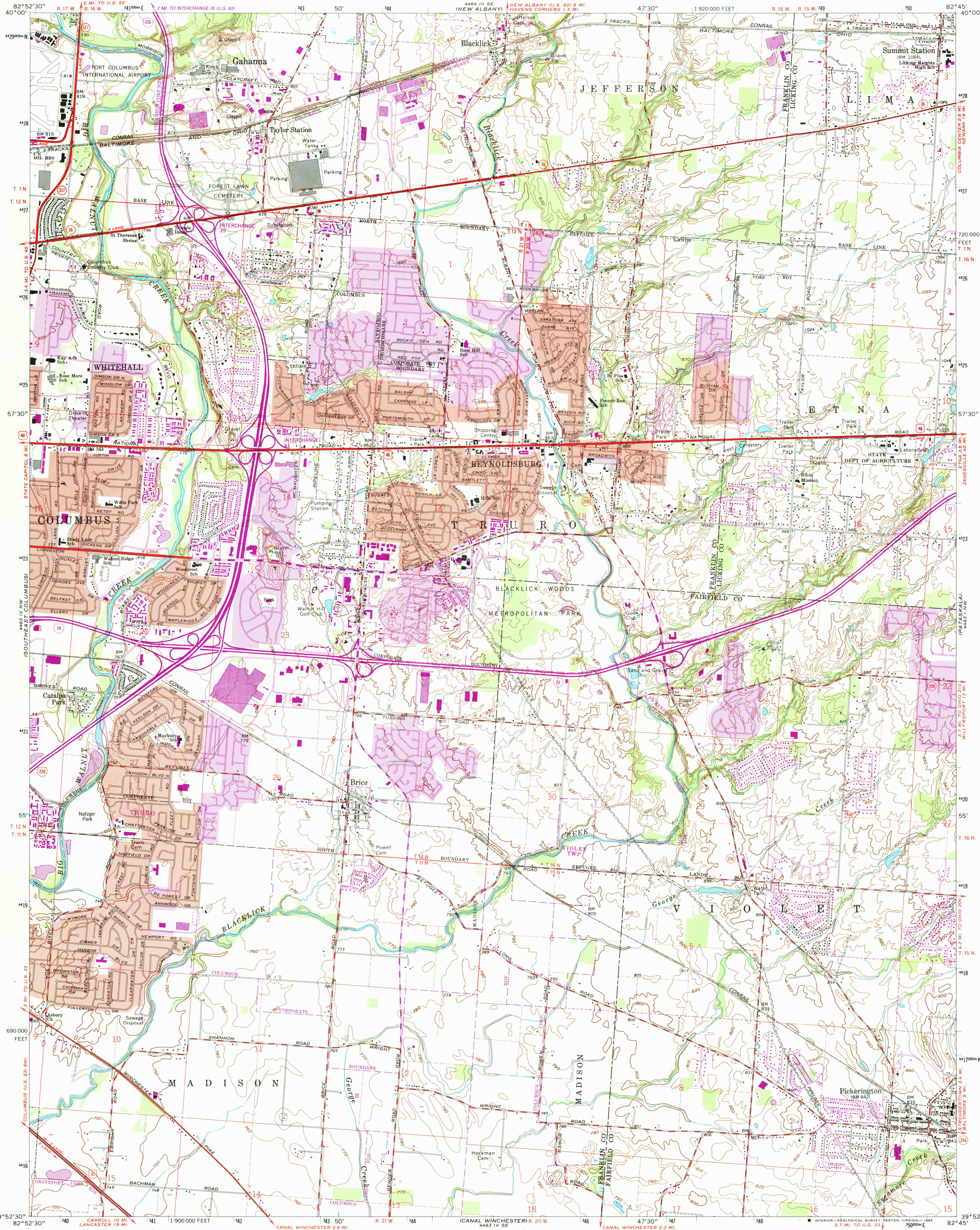


UNITED STATES  
DEPARTMENT OF THE INTERIOR  
GEOLOGICAL SURVEY

REYNOLDSBURG QUADRANGLE  
OHIO  
7.5 MINUTE SERIES (TOPOGRAPHIC)



Mapped, edited, and published by the Geological Survey  
Revised in cooperation with State of Ohio Agencies  
Control by USGS, USCGS, and City of Columbus  
Topography by photogrammetric methods from aerial photographs  
taken 1953 and planetable surveys 1955. Revised 1964  
Polyconic projection. 1927 North American datum  
10,000-foot grid based on Ohio coordinate system, south zone  
1000-meter Universal Transverse Mercator grid ticks, zone 17, shown in blue  
There may be private inholdings within the boundaries of  
the National or State reservations shown on this map  
Red tint indicates areas in which only landmark buildings are shown  
Area north of the Base Line lies within the United States Military District  
Land lines based on the Base Line of the United States Military District  
Area south of the Base Line lies within Congress Lands east of  
the Scioto River. Land lines based on the Ohio River Base  
To place on the predicted North American Datum 1983,  
move the projection lines 3 meters south and  
10 meters west as shown by dashed corner ticks

UTM GRID AND 1985 MAGNETIC NORTH  
DECLINATION AT CENTER OF SHEET

SCALE 1:24,000  
CONTOUR INTERVAL 10 FEET  
NATIONAL GEODETIC VERTICAL DATUM OF 1929

THIS MAP COMPLIES WITH NATIONAL MAP ACCURACY STANDARDS  
FOR SALE BY U.S. GEOLOGICAL SURVEY, RESTON, VIRGINIA 22092  
A FOLDER DESCRIBING TOPOGRAPHIC MAPS AND SYMBOLS IS AVAILABLE ON REQUEST

ROAD CLASSIFICATION  
Heavy-duty Light-duty  
Medium-duty Unimproved dirt  
Interstate Route U.S. Route State Route  
QUADRANGLE LOCATION  
OHIO  
REYNOLDSBURG, OHIO  
39082-H7-TF-024  
1964  
PHOTOREVISED 1985  
DMA 4463 IV NE-SERIES V852  
Revisions shown in purple compiled in cooperation with  
State of Ohio agencies from aerial photographs taken  
1983. This information not field checked. Map edited 1985  
Purple tint indicates extension of urban areas

RETURN TO:  
USGS AND HISTORICAL MAP ARCHIVES