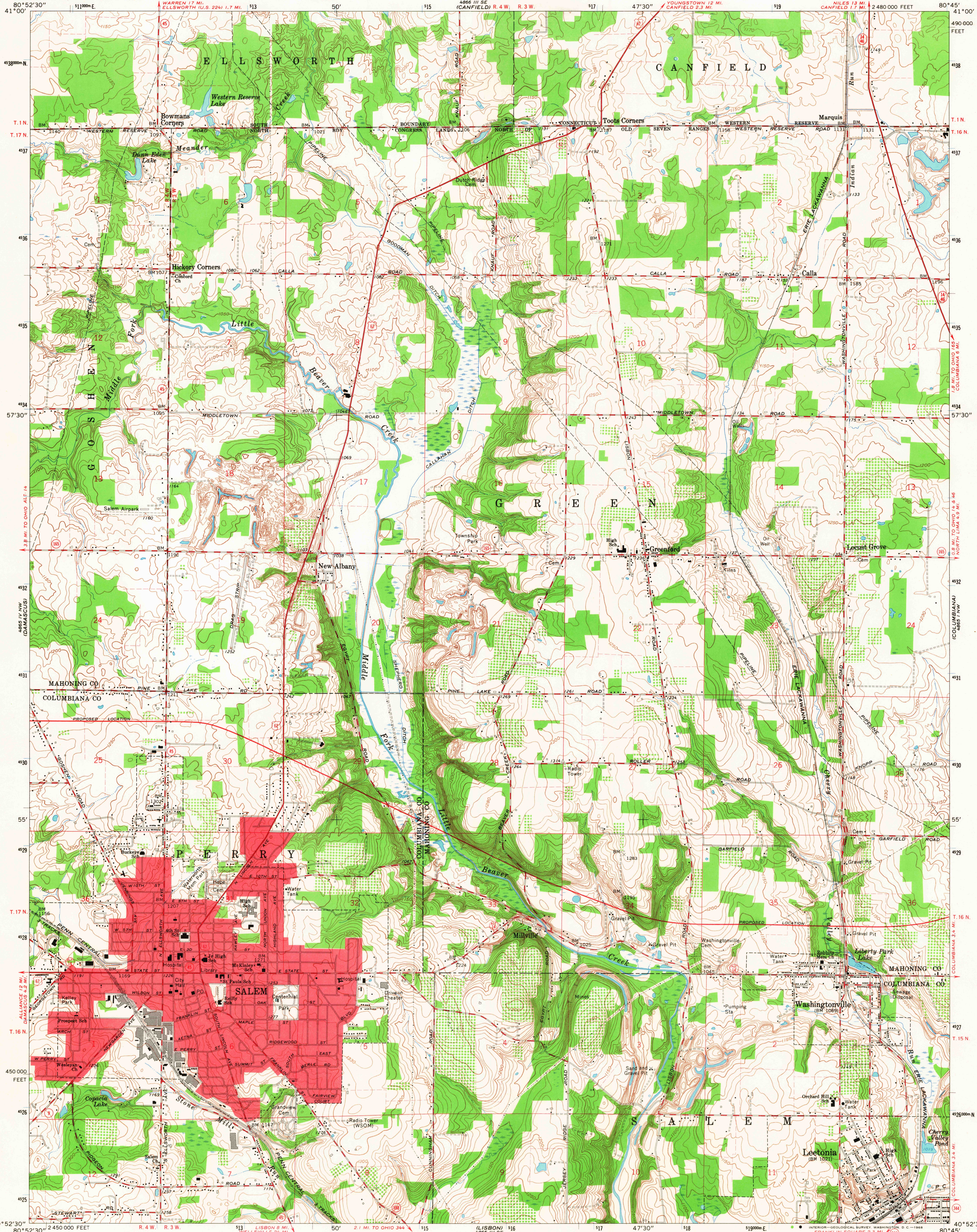
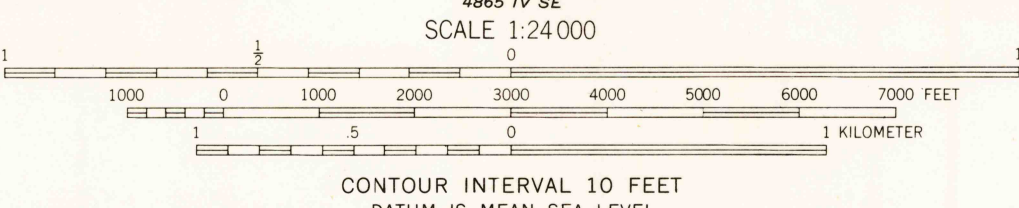


UNITED STATES
DEPARTMENT OF THE INTERIOR
GEOLOGICAL SURVEY

SALEM QUADRANGLE
OHIO
7.5 MINUTE SERIES (TOPOGRAPHIC)



Mapped, edited, and published by the Geological Survey in cooperation with County of Mahoning. Revised in cooperation with State of Ohio agencies. Control by USGS, USCGS, and County of Mahoning. Topography by photogrammetric methods from aerial photographs taken 1950 and by planimetric surveys 1952. Revised 1966. Polyconic projection. 1927 North American datum. 10,000-foot grid based on Ohio coordinate system, north zone 1000-meter Universal Transverse Mercator grid ticks, zone 17, shown in blue. Fine red dashed lines indicate selected fence and field lines where generally visible on aerial photographs. This information is unchecked. Red tint indicates area in which only landmark buildings are shown. Land lines within the Connecticut Western Reserve established by private subdivision. Land lines within Congress Lands north of the Old Seven Ranges based on the Ohio River Base.



THIS MAP COMPLIES WITH NATIONAL MAP ACCURACY STANDARDS
FOR SALE BY U.S. GEOLOGICAL SURVEY, WASHINGTON, D.C. 20242
A FOLDER DESCRIBING TOPOGRAPHIC MAPS AND SYMBOLS IS AVAILABLE ON REQUEST

USGS
Historical File
Topographic Division



FILE COPY
TOPOGRAPHIC DIVISION

ROAD CLASSIFICATION
Heavy-duty ——— Light-duty ———
Medium-duty ——— Unimproved dirt ———
U.S. Route ——— State Route ———

SALEM, OHIO
NE/4 LISBON 15' QUADRANGLE
N4052.5-W8045.7.5

1966
AMS 4865 IV NE-SERIES V852