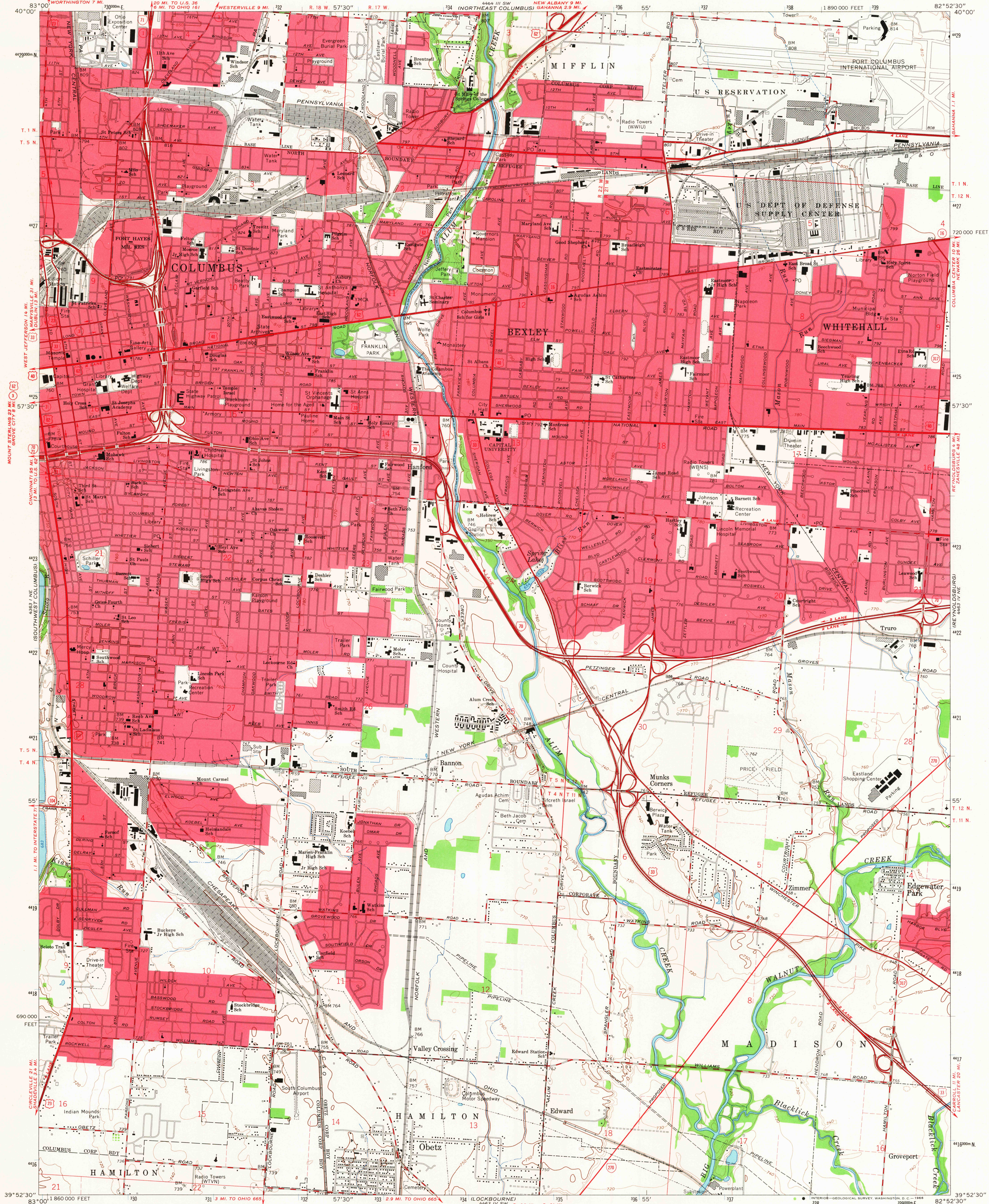
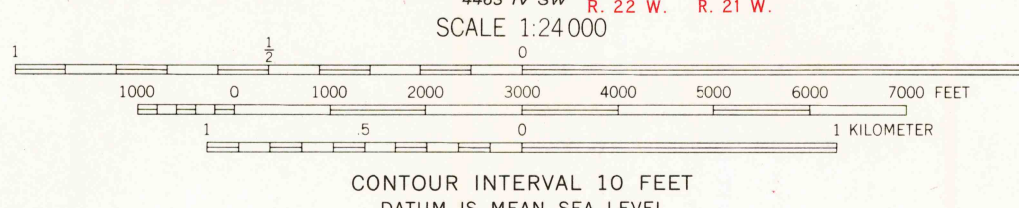


UNITED STATES  
DEPARTMENT OF THE INTERIOR  
GEOLOGICAL SURVEY

SOUTHEAST COLUMBUS QUADRANGLE  
OHIO—FRANKLIN CO.  
7.5 MINUTE SERIES (TOPOGRAPHIC)  
NW/4 EAST COLUMBUS 15' QUADRANGLE



Mapped, edited, and published by the Geological Survey  
Revised in cooperation with State of Ohio agencies  
Control by USGS, USCGS, and City of Columbus  
Planimetry by photogrammetric methods from aerial photographs taken  
1953 and 1954. Topography by planimetric surveys 1955. Revised 1964  
Polyconic projection. 1927 North American datum  
10,000-foot grid based on Ohio coordinate system, south zone  
1000-meter Universal Transverse Mercator grid ticks,  
zone 17, shown in blue  
Fine red dashed lines indicate selected fence and field lines where  
generally visible on aerial photographs. This information is unchecked  
Red tint indicates areas in which only landmark buildings are shown  
Area north of Base Line lies within the United States Military District  
Land lines based on the Base Line of the United States Military District  
Area south of Base Line lies within Congress Lands east of the Scioto River  
Land lines within T. 4 and 5 N. R. 22 W. based on the Scioto River Base  
Land lines within T. 11 and 12 N. R. 21 W. based on the Ohio River Base



USGS  
Historical File  
Topographic Division  
ROAD CLASSIFICATION  
Heavy-duty ——— Light-duty ———  
Medium-duty ——— Unimproved dirt ———  
Interstate Route U.S. Route State Route



SOUTHEAST COLUMBUS, OHIO  
NW/4 EAST COLUMBUS 15' QUADRANGLE  
N3952.5—W8252.5/7.5  
1964  
AMS 4463 IV NW—SERIES V852

THIS MAP COMPLIES WITH NATIONAL MAP ACCURACY STANDARDS  
FOR SALE BY U.S. GEOLOGICAL SURVEY, WASHINGTON, D.C. 20242  
A FOLDER DESCRIBING TOPOGRAPHIC MAPS AND SYMBOLS IS AVAILABLE ON REQUEST

FILE COPY  
TOPOGRAPHIC DIVISION

3565