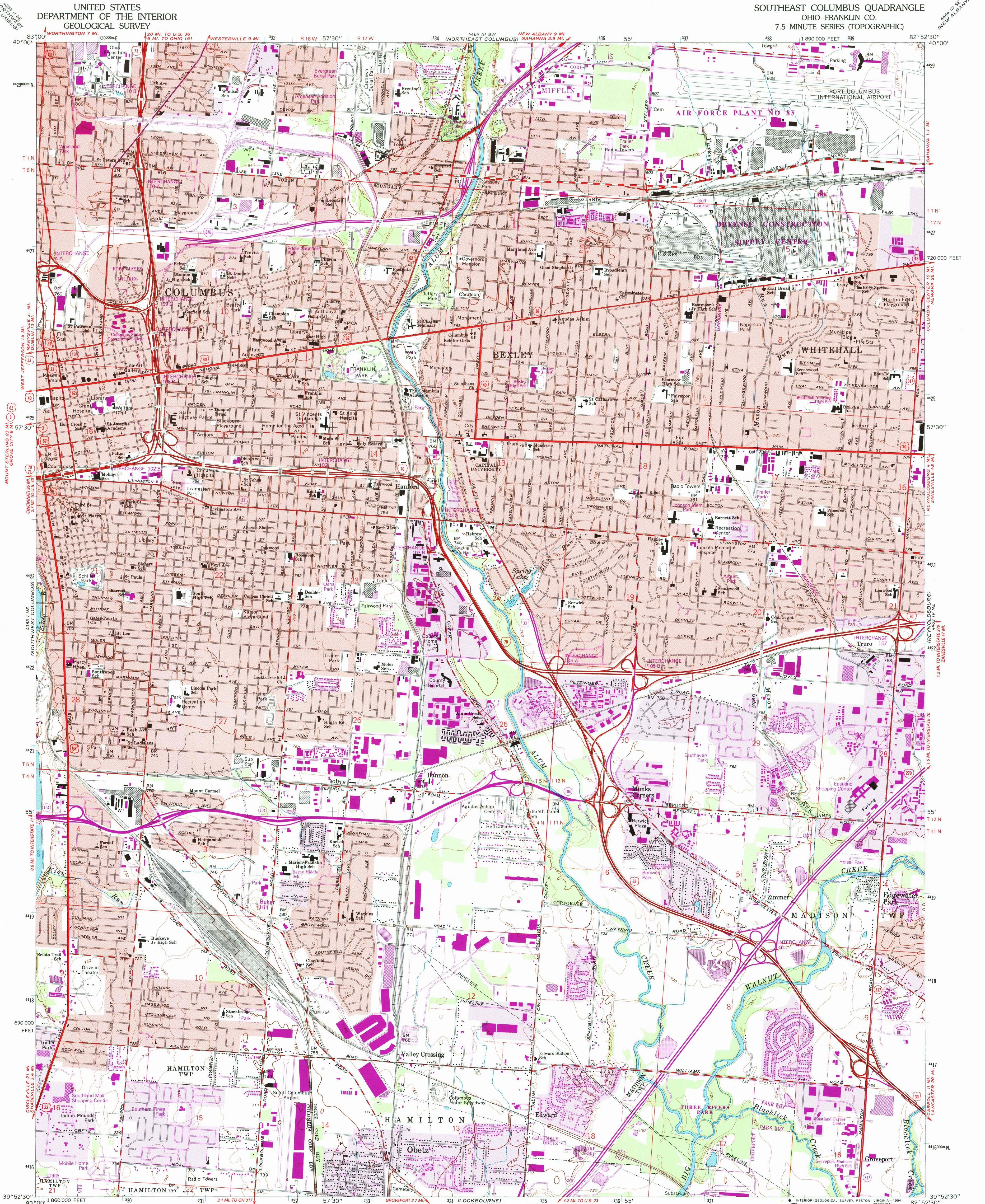
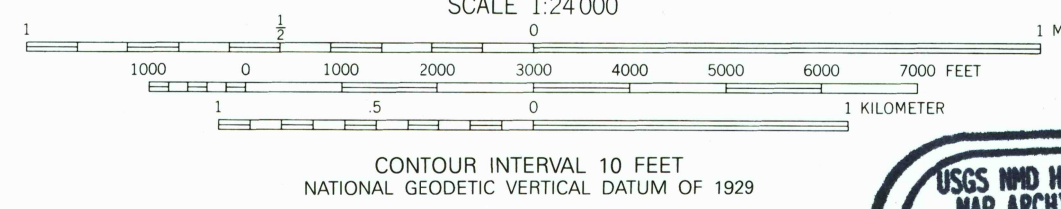
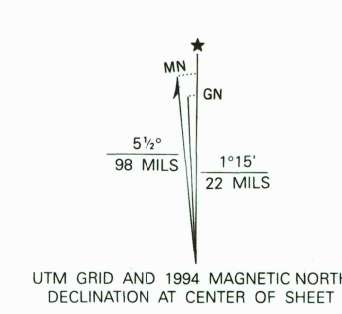


UNITED STATES  
DEPARTMENT OF THE INTERIOR  
GEOLOGICAL SURVEY

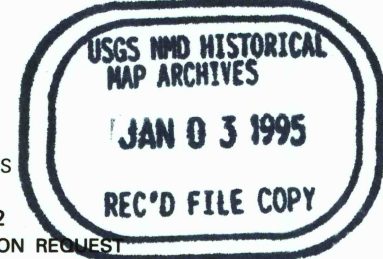
SOUTHEAST COLUMBUS QUADRANGLE  
OHIO-FRANKLIN CO.  
7.5 MINUTE SERIES (TOPOGRAPHIC)



Produced by the United States Geological Survey  
Control by USGS and NOS/NOAA  
Compiled from aerial photographs taken 1953 and 1954. Revisions shown in purple  
and woodland compiled from aerial photographs taken 1989 and 1992 and other  
sources. Map dated 1994. Conflicts may exist between  
some updated features and previously mapped contours.  
North American Datum of 1927 (NAD 27). Projection and 10 000-foot ticks: Ohio  
Coordinate System, south zone (Lambert Conformal Conic)  
Blue 1000-meter Universal Transverse Mercator ticks, zone 17  
North American Datum of 1983 (NAD 83) is shown by dashed corner ticks. The values  
of the shift between NAD 27 and NAD 83 for 7.5-minute intersections are obtainable  
from National Geodetic Survey NADCON software.  
There may be private holdings within the boundaries of the  
National or State reservations shown on this map.  
Area north of Base Line lies within the United States Military District  
Land lines based on the Base Line of the United States Military District  
Area South of Base Line lies within Congress Lands east of the Scioto River  
Land lines within T4, 4 and 5 N, R22W, based on the Scioto River Base  
Land lines within T5, 11 and 12 N, R21W, based on the Ohio River base



THIS MAP COMPLIES WITH NATIONAL MAP ACCURACY STANDARDS  
FOR SALE BY U.S. GEOLOGICAL SURVEY  
DENVER, COLORADO 80225, OR RESTON, VIRGINIA 22092  
A FOLDER DESCRIBING TOPOGRAPHIC MAPS AND SYMBOLS IS AVAILABLE ON REQUEST



ROAD CLASSIFICATION  
Primary highway, hard surface  
Secondary highway, hard surface  
Light-duty road, hard or improved surface  
Unimproved road  
Interstate Route  
U.S. Route  
State Route

SOUTHEAST COLUMBUS, OH  
39082-H8-TF-024  
1964  
REVISED 1994  
DMA 4463 IV NW-SERIES V852