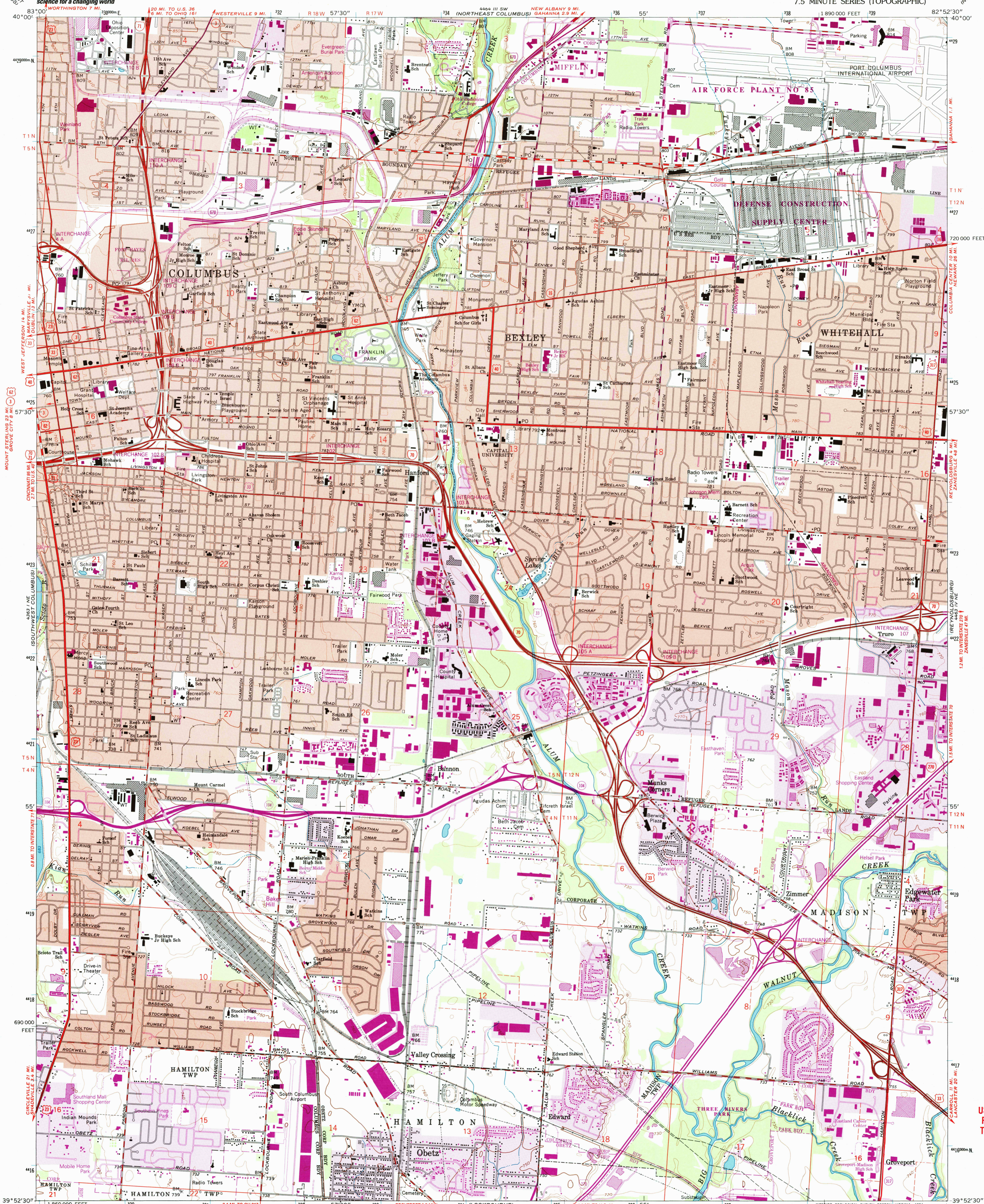




U.S. DEPARTMENT OF THE INTERIOR
U.S. GEOLOGICAL SURVEY

SOUTHEAST COLUMBUS QUADRANGLE
OHIO-FRANKLIN CO.
7.5 MINUTE SERIES (TOPOGRAPHIC)



USGS Library
Reston, VA.
Topo Archive

Produced by the United States Geological Survey
Control by USGS and NOS/NOAA
Compiled from aerial photographs taken 1953 and 1954. Revisions shown in purple
and woodland compiled from aerial photographs taken 1989 and 1992 and other
sources. Map edited 1994. Contours may exist between
some updated features and previously mapped contours
North American Datum of 1927 (NAD 27). Projection and 10 000-foot ticks: Ohio
Coordinate System, south zone (Lambert Conformal Conic)
Blue 1000-meter Universal Transverse Mercator ticks, zone 17
North American Datum of 1983 (NAD 83) is shown by dashed corner ticks. The values
of the shift between NAD 27 and NAD 83 for 7.5-minute intersections are obtainable
from National Geographic Survey NADCON software
There may be private inholdings within the boundaries of the
National or State reservations shown on this map
Area north of Base Line lies within the United States Military District
Land lines based on the Base Line of the United States Military District
Area South of Base Line lies within Congress Lands east of the Scioto River
Land lines within T. 4 and 5 N.-R. 22 W. based on the Scioto River Base
Land lines within T. 11 and 12 N.-R. 21 W. based on the Ohio River base

UTM GRID AND 1984 MAGNETIC NORTH
DECLINATION AT CENTER OF SHEET

SCALE 1:24 000
1 000 000 FEET
1 KILOMETER
CONTOUR INTERVAL 10 FEET
NATIONAL GEODETIC VERTICAL DATUM OF 1929



ROAD CLASSIFICATION
Primary highway, hard surface
Secondary highway, hard surface
Unimproved road
Interstate Route
U. S. Route
State Route

SOUTHEAST COLUMBUS, OH
39082-HF-024

APR 21 2005
1964
REVISED 1994
DMA 4463 IV NW-SERIES V852



3 1818 0053670 0