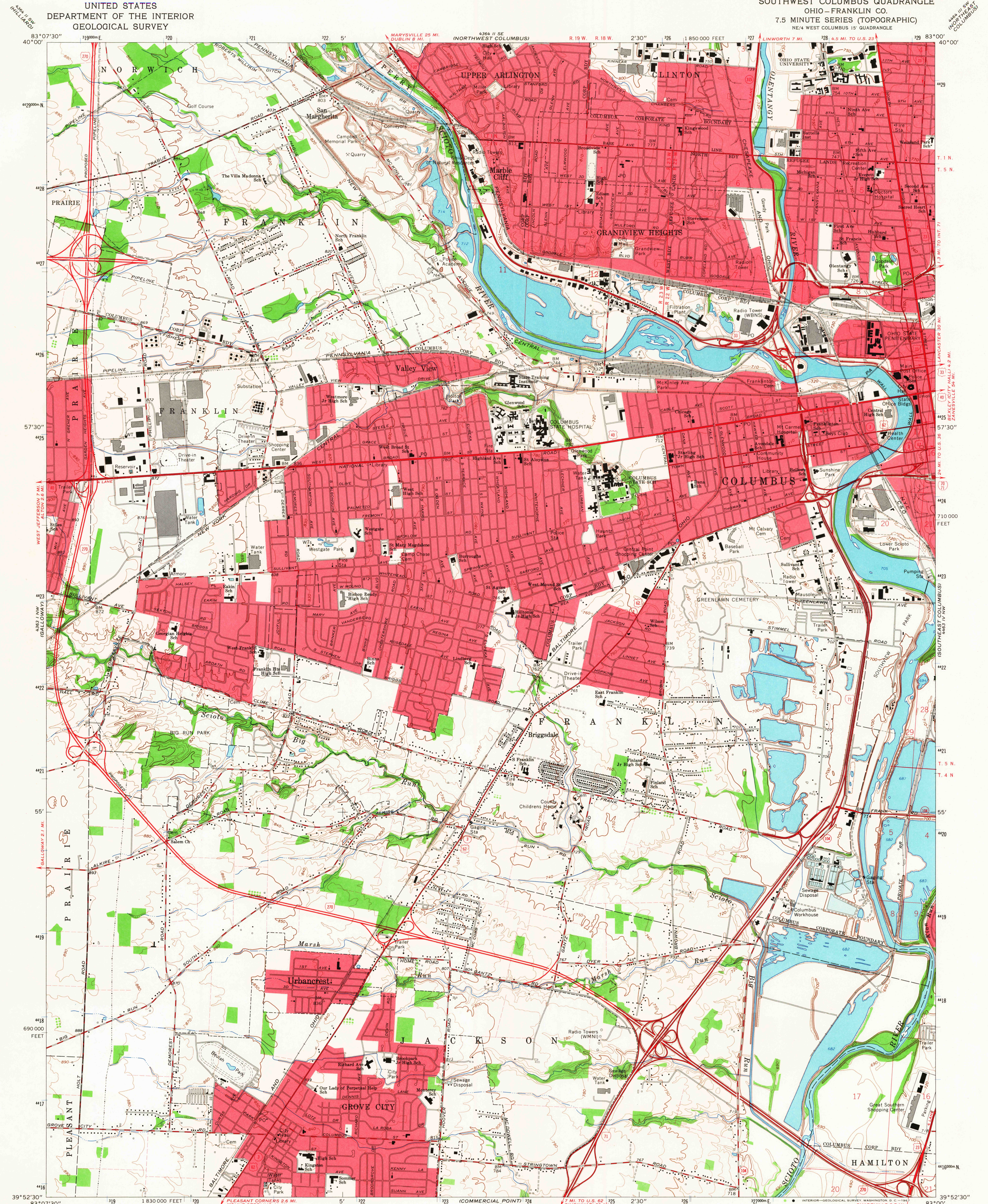


UNITED STATES
DEPARTMENT OF THE INTERIOR
GEOLOGICAL SURVEY

SOUTHWEST COLUMBUS QUADRANGLE
OHIO—FRANKLIN CO.
7.5 MINUTE SERIES (TOPOGRAPHIC)
NE/4 WEST COLUMBUS 15' QUADRANGLE



Maped, edited, and published by the Geological Survey
Revised in cooperation with State of Ohio agencies
Control by USGS, USCGS, and City of Columbus
Topography by photogrammetric methods from aerial photographs
taken 1953 and 1954. Field checked 1955. Revised 1965
Polyconic projection. 1927 North American datum
10,000-foot grid based on Ohio coordinate system, south zone
1000-meter Universal Transverse Mercator grid ticks,
zone 17, shown in blue
Fine red dashed lines indicate selected fence and field lines where
generally visible on aerial photographs. This information is unchecked
Red tint indicates areas in which only landmark buildings are shown
Area west of the Scioto River lies within the Virginia Military District
Area north of Base Line lies within the United States Military District
Land lines based on the Base Line of the United States Military District
Area south of Base Line lies within Congress Lands east of the Scioto River
Land lines based on the Scioto River Base

SCALE 1:24,000
CONTOUR INTERVAL 10 FEET
DATUM IS MEAN SEA LEVEL
UTM GRID AND 1965 MAGNETIC NORTH
DECLINATION AT CENTER OF SHEET
THIS MAP COMPLIES WITH NATIONAL MAP ACCURACY STANDARDS
FOR SALE BY U.S. GEOLOGICAL SURVEY, WASHINGTON, D.C. 20242
A FOLDER DESCRIBING TOPOGRAPHIC MAPS AND SYMBOLS IS AVAILABLE ON REQUEST

USGS
Historical File
Topographic Division
ROAD CLASSIFICATION
Heavy-duty ——— Light-duty ———
Medium-duty ——— Unimproved dirt ———
Interstate Route U.S. Route State Route
SOUTHWEST COLUMBUS, OHIO
NE/4 WEST COLUMBUS 15' QUADRANGLE
N3952.5—W8300/7.5
1965
AMS 4363 1 NE—SERIES V852
MAY 17 1967
3550
400 plan