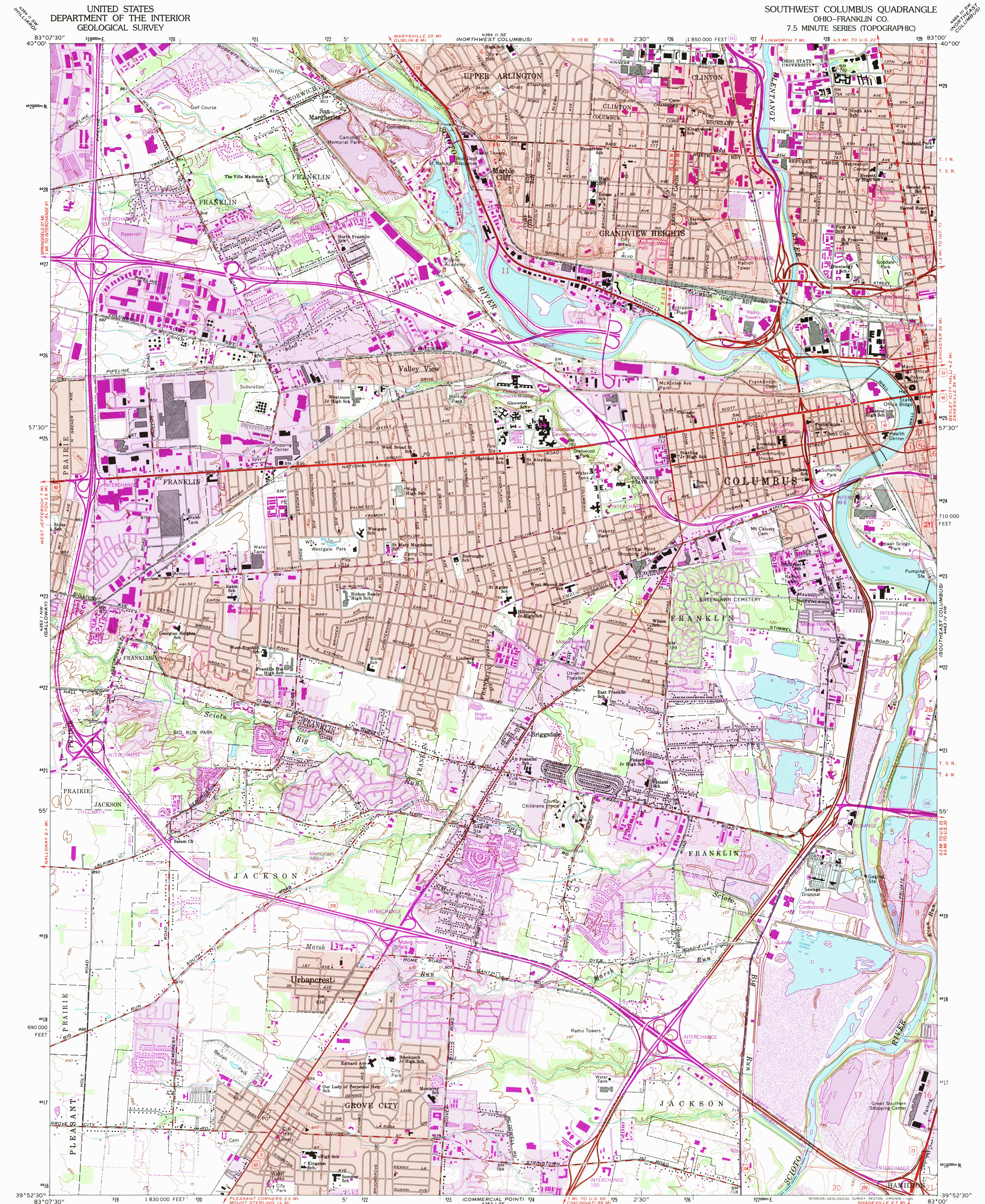


SOUTHWEST COLUMBUS QUADRANGLE
OHIO-FRANKLIN CO.
7.5 MINUTE SERIES (TOPOGRAPHIC)



Produced by the United States Geological Survey
Control by USGS and NOS/NOAA

Compiled from aerial photographs taken 1953 and 1954. Revisions shown in purple and yellow compiled from aerial photographs taken between 1959 and 1992 and other sources. Modified 1995. Conflicts may exist between some other updates and previously mapped contours

North American Datum of 1927 (NAD 27). Projection and 10000-foot ticks: Ohio Coordinate System, south zone (Lambert Conformal Conic)

Blue 1000-meter Universal Transverse Mercator ticks, zone 17

North American Datum of 1983 (NAD 83) is shown by dashed corner ticks. The values of the shift between NAD 27 and NAD 83 for 7.5-minute intersections are obtainable from National Geographic Survey NADCON software

Area west of the Scioto River lies within the Virginia Military District
Area north of Base Line lies within the United States Military District
Land lines based on the Base Line of the United States Military District
Area South of Base Line lies within Congress Lands east of the Scioto River
Land lines based on the Scioto River Base

SCALE 1:24 000





1 1/2 0 1000 2000 3000 4000 5000 6000 7000 FEET 1 MILE




1 0.5 0 1 KILOMETER

CONTOUR INTERVAL 10 FEET
NATIONAL GEODETIC VERTICAL DATUM OF 1929

THIS MAP COMPLIES WITH NATIONAL MAP ACCURACY STANDARDS
FOR SALE BY U.S. GEOLOGICAL SURVEY
DENVER, COLORADO 80225, OR RESTON, VIRGINIA 22092
A FOLDER DESCRIBING TOPOGRAPHIC MAPS AND SYMBOLS IS AVAILABLE ON REQUEST

ROAD CLASSIFICATION

| | | | |
|------------------------------------|---|--|---|
| Primary highway, hard surface |  | Light-duty road, hard or improved surface |  |
| Secondary highway, hard surface |  | Unimproved road |  |

 Interstate Route
  U. S. Route
  State Route

SOUTHWEST COLUMBUS, OH
39083-H1-TF-024
1965
REVISED 1995
DMA 4363 I NE-SERIES V852