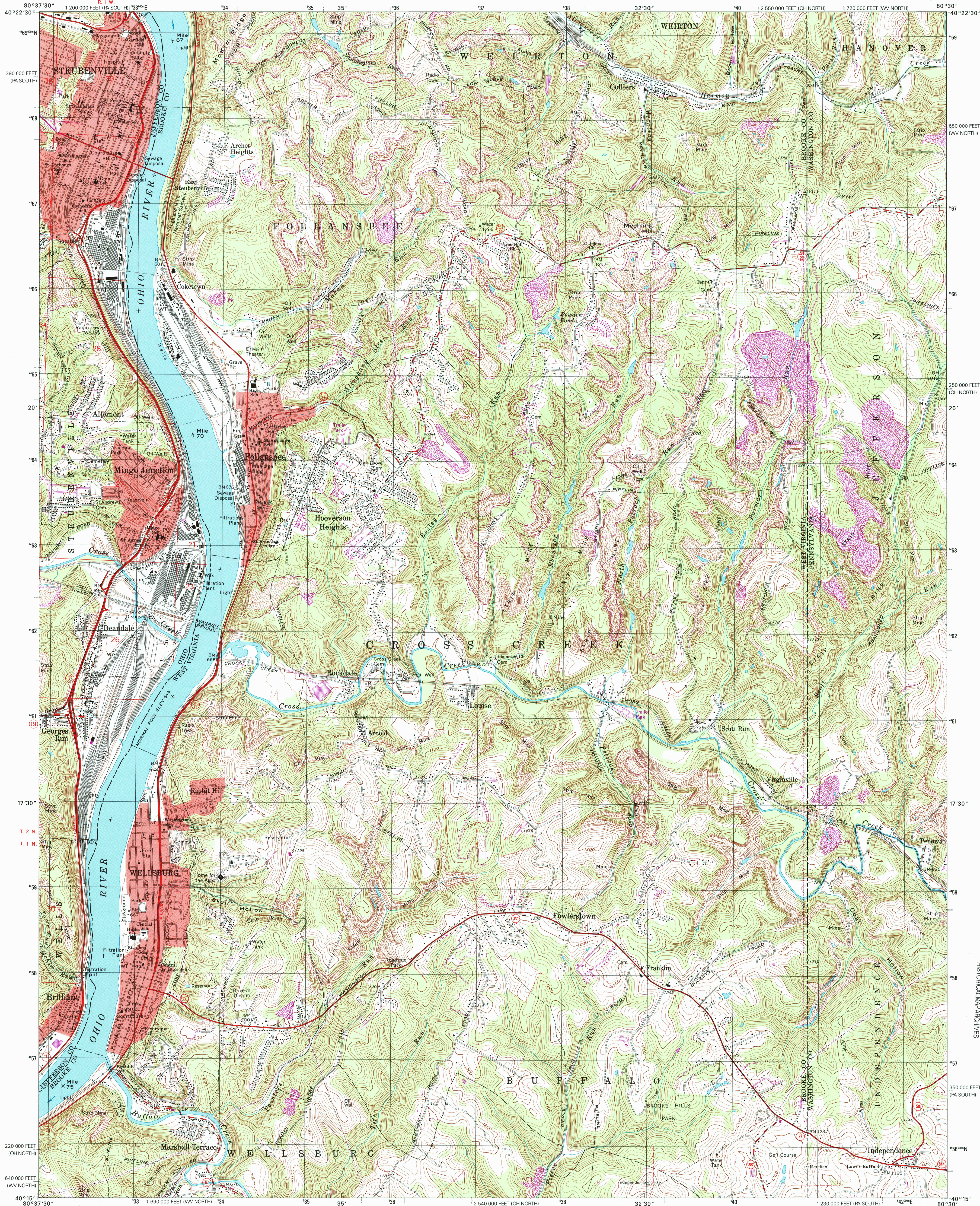


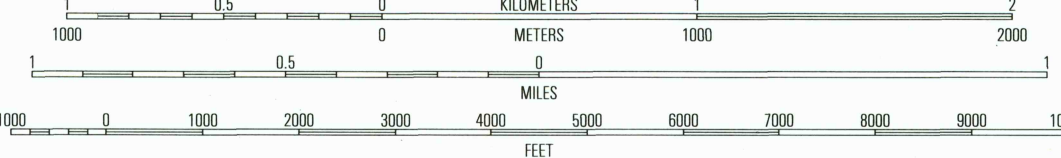
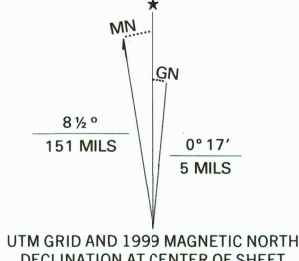


U.S. DEPARTMENT OF THE INTERIOR
U.S. GEOLOGICAL SURVEY

STEUBENVILLE EAST QUADRANGLE
OHIO-WEST VIRGINIA-PENNSYLVANIA
7.5-MINUTE SERIES (TOPOGRAPHIC)



Produced by the United States Geological Survey
Topography compiled 1954. Planimetry derived from imagery taken
1976 and other sources. Photorevised using imagery dated 1997;
no major culture or drainage changes observed. PLSS and survey control
current as of 1968. Boundaries, other than corporate, revised 1998.
North American Datum of 1927 (NAD 27).
Projection: West Virginia coordinate system, north zone
(Lambert conformal conic).
10 000-foot ticks: West Virginia coordinate system, north zone,
Pennsylvania coordinate system, south zone, and
Ohio coordinate system, north zone.
1000-meter Universal Transverse Mercator grid, zone 17
North American Datum of 1983 (NAD 83) is shown by dashed
corner ticks. The values of the shift between NAD 27 and NAD 83
for 7.5-minute intersections are obtainable from National Geodetic
Survey NADCON software.
The state boundary as shown represents the approximate position of the
low water line as determined from U.S. Corps of Engineers Ohio River
charts, survey 1913, and supplementary information.
Ohio area lies within the Old Seven Ranges.
Land lines based on the Ohio River Base.
Areas bounded by dashed purple lines and printed with
disturbed surface pattern represent reclaimed mining areas.
Information shown in purple may not meet USGS content standards
and may conflict with previously mapped contours.



CONTOUR INTERVAL 20 FEET
DOTTED LINES REPRESENT 10-FOOT CONTOURS
TO CONVERT FROM FEET TO METERS, MULTIPLY BY 0.3048

THIS MAP COMPLIES WITH NATIONAL MAP ACCURACY STANDARDS
FOR SALE BY U.S. GEOLOGICAL SURVEY, P.O. BOX 25286, DENVER, COLORADO 80225
A FOLDER DESCRIBING TOPOGRAPHIC MAPS AND SYMBOLS IS AVAILABLE ON REQUEST



QUADRANGLE LOCATION

1	2	3
4	5	6
7	8	

1 Knoxville
2 Weirton
3 Burgettstown
4 Steubenville West
5 Avella
6 Tiltonsville
7 Bethany
8 West Middletown

ROAD CLASSIFICATION
Primary highway
hard surface
Secondary highway
hard surface
Light-duty road, hard or
improved surface
Unimproved road
Interstate Route
U.S. Route
State Route

STEUBENVILLE EAST, OH-WV-PA

1997

NIMA 4864 I SE-SERIES V854

USGS NMD

JUN 3 0 1999

RECEIVED

