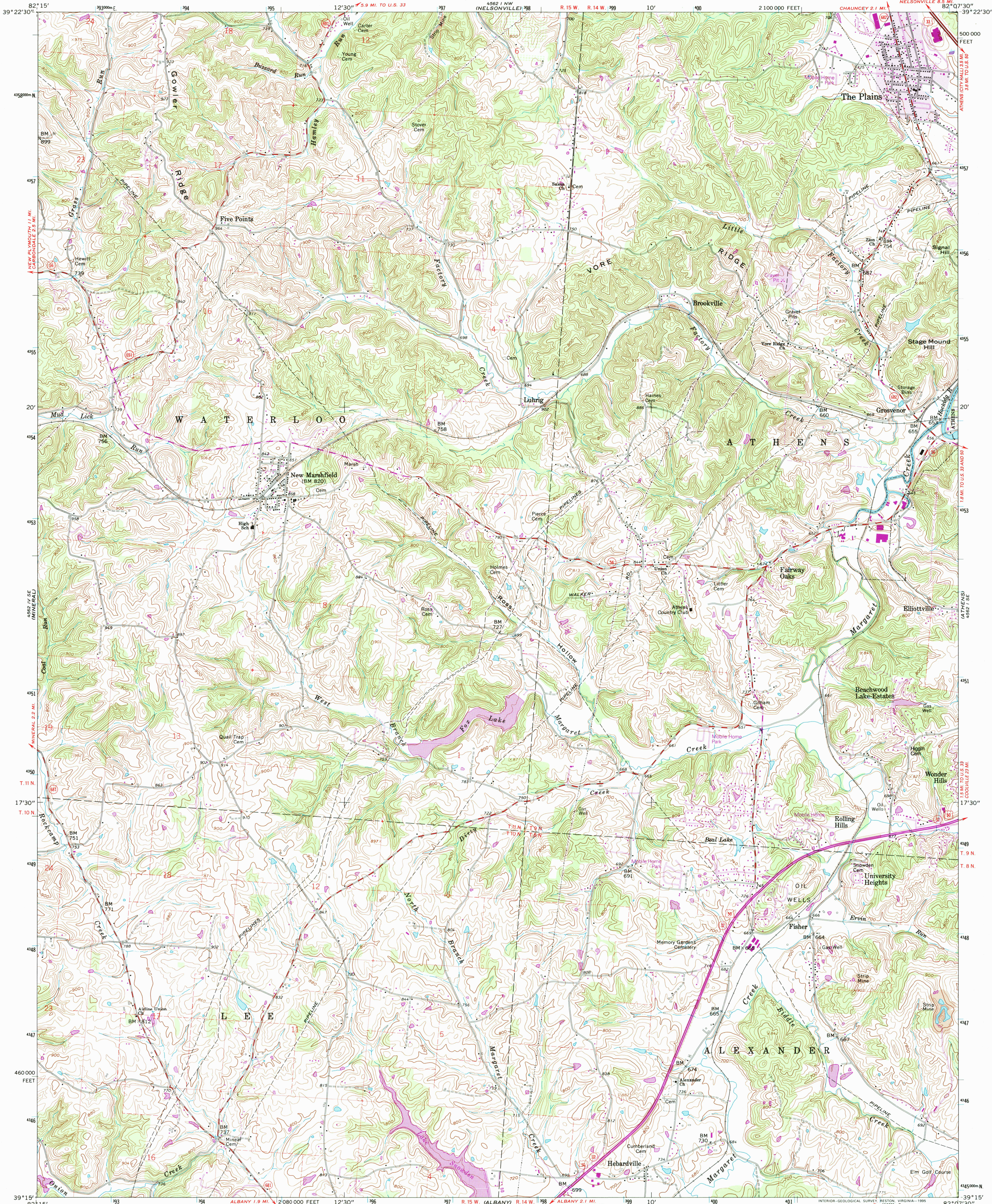


UNITED STATES
DEPARTMENT OF THE INTERIOR
GEOLOGICAL SURVEY

THE PLAINS QUADRANGLE
OHIO-ATHENS CO.
7.5 MINUTE SERIES (TOPOGRAPHIC)



Produced by the United States Geological Survey in cooperation with State of Ohio agencies
Control by USGS and NOS/NOAA
Compiled from aerial photographs taken 1960. Revisions shown in purple and woodland compiled from aerial photographs taken 1991 and 1992 and other sources. Map edited 1995. Conflicts may exist between some updated features and previously mapped contours
North American Datum of 1927 (NAD 27). Projection and 10000-foot ticks: Ohio Coordinate System, south zone (Lambert Conformal Conic)
Blue 1000-meter Universal Transverse Mercator ticks, zone 17
North American Datum of 1983 (NAD 83) is shown by dashed corner ticks. The values of the shift between NAD 27 and NAD 83 for 7.5-minute intersections are obtainable from National Geodetic Survey NADCON software
Land lines based on the Ohio River Base. Dotted land lines established by private subdivision of the Ohio Company Purchase.

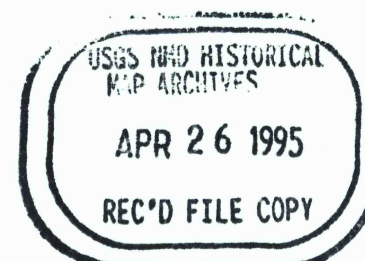
UTM GRID AND 1995 MAGNETIC NORTH DECLINATION AT CENTER OF SHEET
6° 107 MILS
0° 45' 13 MILS

SCALE 1:24 000
1 000 000 2000 4000 6000 8000 10000 FEET
1 5 10 15 20 KILOMETER
CONTOUR INTERVAL 20 FEET
NATIONAL GEODETIC VERTICAL DATUM OF 1929

THIS MAP COMPLIES WITH NATIONAL MAP ACCURACY STANDARDS
FOR SALE BY U.S. GEOLOGICAL SURVEY
DENVER, COLORADO 80225, OR RESTON, VIRGINIA 22092
A FOLDER DESCRIBING TOPOGRAPHIC MAPS AND SYMBOLS IS AVAILABLE ON REQUEST



ROAD CLASSIFICATION
Heavy-duty ——— Light-duty ———
Medium-duty ——— Unimproved dirt ———
U.S. Route ——— State Route ———



THE PLAINS, OH
39082-C2-TF-024
1981
REVISED 1995
DMA 4562 I SW-SERIES V852