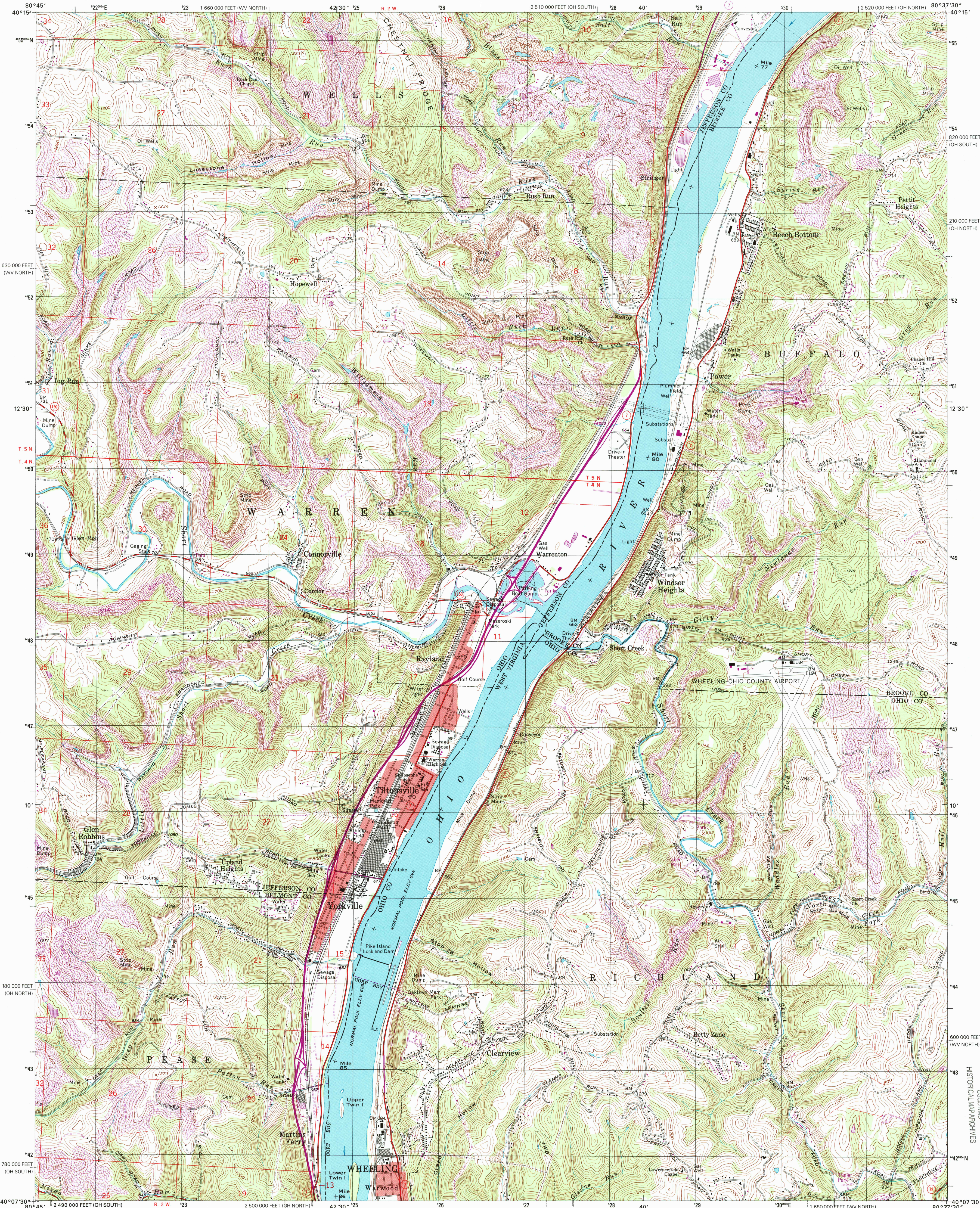


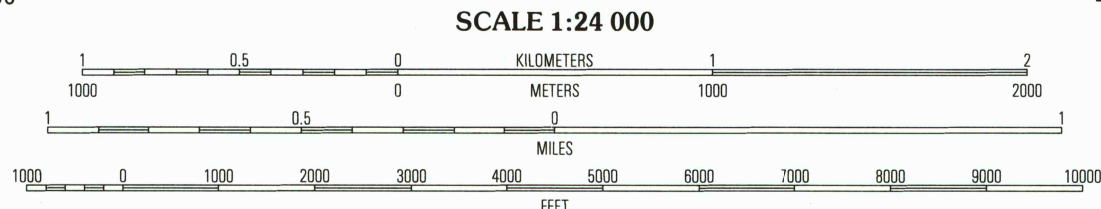
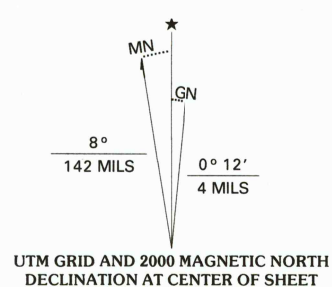


U.S. DEPARTMENT OF THE INTERIOR
U.S. GEOLOGICAL SURVEY

TILTONSVILLE QUADRANGLE
OHIO-WEST VIRGINIA
7.5-MINUTE SERIES (TOPOGRAPHIC)



Produced by the United States Geological Survey
Topography compiled 1966. Planimetry derived from imagery taken 1982 and other sources. Photorevised using imagery dated 1997; no major culture or drainage changes observed. PLSS and survey control current as of 1968. Boundaries, other than corporate, verified 2000
North American Datum of 1927 (NAD 27)
Projection: Ohio coordinate system, north zone (Lambert conformal conic)
10 000-foot ticks. Ohio coordinate system north and south zones, and West Virginia coordinate system, north zone
1 000-meter Universal Transverse Mercator grid, zone 17
North American Datum of 1983 (NAD 83) is shown by dashed corner ticks. The values of the shift between NAD 27 and NAD 83 for 7.5-minute intersections are obtainable from National Geographic Survey NADCON software
The state boundary as shown represents the approximate position of the low water line as determined from U.S. Corps of Engineers Ohio River Charts, surveyed 1913, and supplementary information Ohio area lies within the Old Seven Ranges
Land lines based on the Ohio River Base
Information shown in purple may not meet USGS content standards and may conflict with previously mapped contours



CONTOUR INTERVAL 20 FEET
NATIONAL GEODETIC VERTICAL DATUM OF 1929
TO CONVERT FROM FEET TO METERS, MULTIPLY BY 0.3048

THIS MAP COMPLIES WITH NATIONAL MAP ACCURACY STANDARDS
FOR SALE BY U.S. GEOLOGICAL SURVEY, P.O. BOX 25286, DENVER, COLORADO 80225
A FOLDER DESCRIBING TOPOGRAPHIC MAPS AND SYMBOLS IS AVAILABLE ON REQUEST



QUADRANGLE LOCATION

ROAD CLASSIFICATION
Primary highway hard surface Light-duty road, hard or improved surface
Secondary highway hard surface Unimproved road
Interstate Route U.S. Route State Route

1	2	3	1 Smithfield
4	5	6	2 Steubenville West
7	8	9	3 Steubenville East
			4 Dillon
			5 Bethany
			6 Lansing
			7 Wheeling
			8 Valley Grove

ADJOINING 7.5 QUADRANGLE NAMES

TILTONSVILLE, OH-WV

1997

NIMA 4864 II NW-SERIES V852

RECEIVED
NOV 20 2000
USGS WMD
HISTORICAL MAP ARCHIVES

