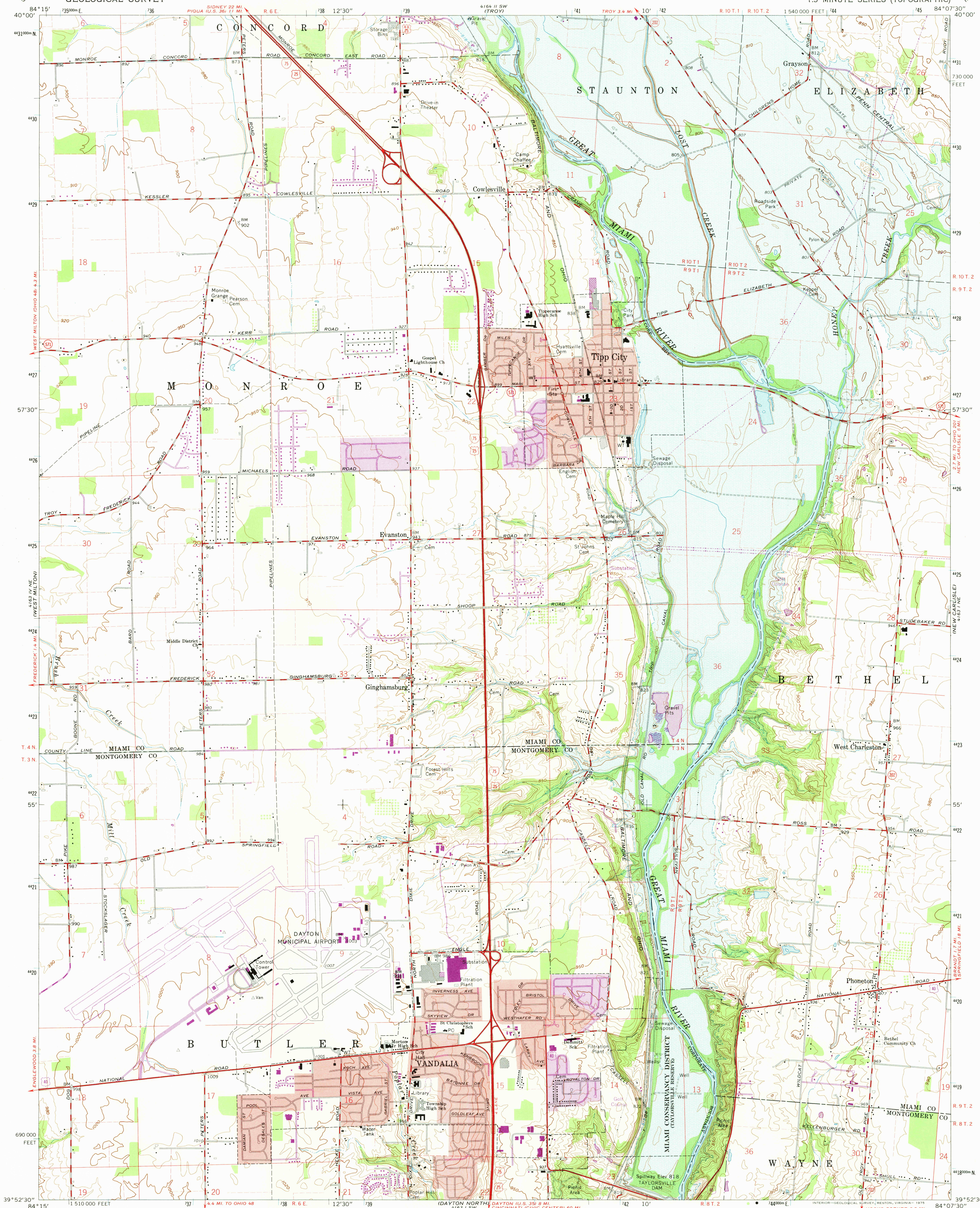
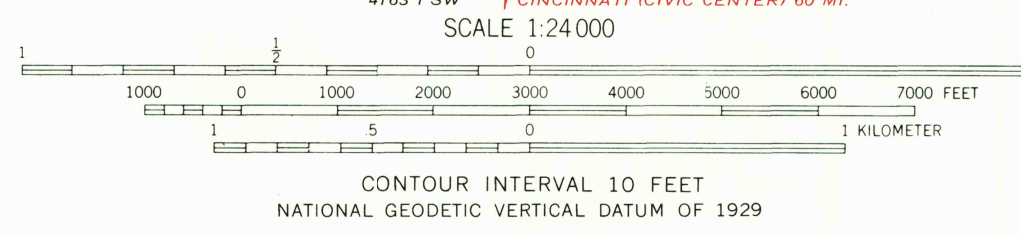
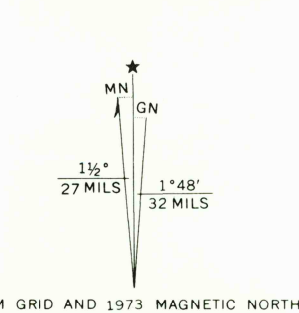


UNITED STATES
DEPARTMENT OF THE INTERIOR
GEOLOGICAL SURVEY

TIPP CITY QUADRANGLE
OHIO
7.5 MINUTE SERIES (TOPOGRAPHIC)



Mapped, edited, and published by the Geological Survey
in cooperation with Army Map Service
Revised in cooperation with State of Ohio agencies
Control by USGS and USC&GS
Topography by photogrammetric methods from aerial
photographs taken 1954. Field checked 1955. Revised 1965
Polyconic projection. 1927 North American datum.
10,000-foot grid based on Ohio coordinate system, south zone
1000-meter Universal Transverse Mercator grid ticks, zone 16, shown in blue
Fine red dashed lines indicate selected fence and field lines where
generally visible on aerial photographs. This information is unchecked
Red tint indicates areas in which only landmark buildings are shown
Areas covered by dashed light-blue pattern are subject to
controlled inundation
Area west of the Great Miami River lies within the Miami
River Survey. Area east of the Great Miami River lies within the
Between the Miamis. Land lines based on the Great Miami River Base



THIS MAP COMPLIES WITH NATIONAL MAP ACCURACY STANDARDS
FOR SALE BY U.S. GEOLOGICAL SURVEY, RESTON, VIRGINIA 22092
A FOLDER DESCRIBING TOPOGRAPHIC MAPS AND SYMBOLS IS AVAILABLE ON REQUEST

Revisions shown in purple compiled in cooperation with
State of Ohio agencies from aerial photographs taken
1973. This information not field checked
Purple tint indicates extension of urban areas

USGS
Historical File
Topographic Division

TIPP CITY, OHIO
N3952.5-W8407.5/7.5
1965
PHOTOREVISED 1973
AMS 4163 I NW-SERIES V852

JAN 24 1975

4850