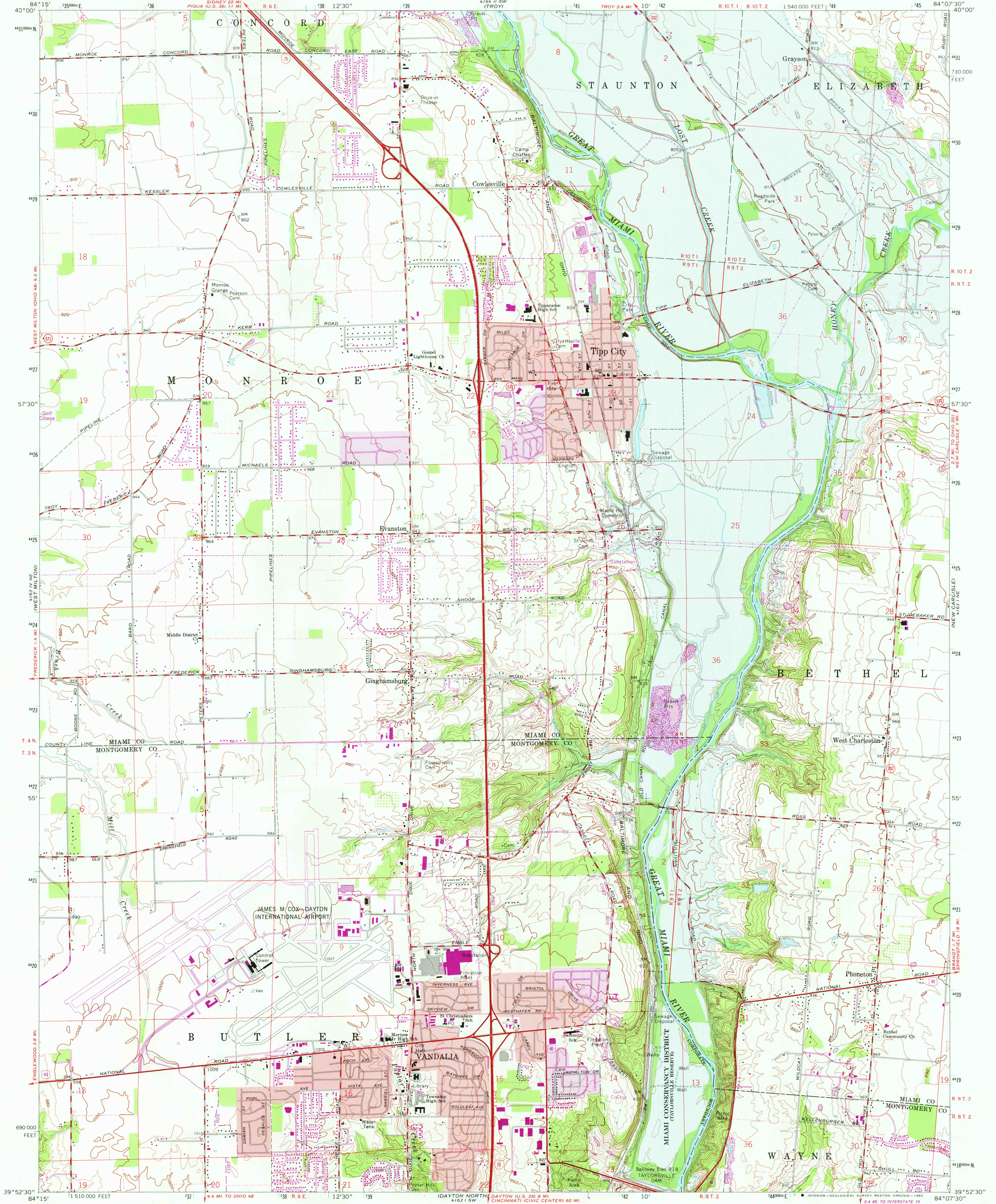
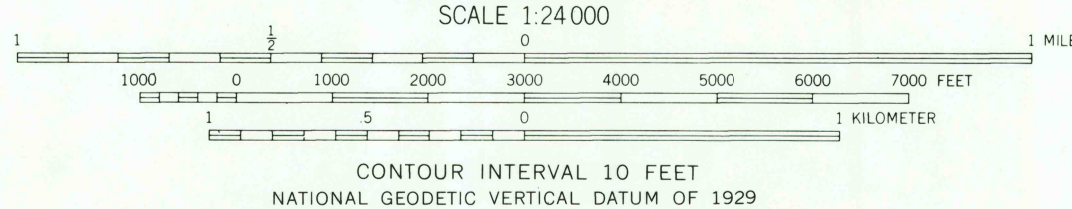
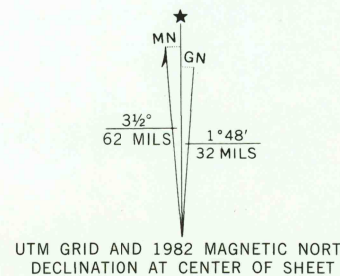


UNITED STATES  
DEPARTMENT OF THE INTERIOR  
GEOLOGICAL SURVEY

TIPP CITY QUADRANGLE  
OHIO  
7.5 MINUTE SERIES (TOPOGRAPHIC)



Mapped, edited, and published by the Geological Survey in cooperation with Army Map Service  
Revised in cooperation with State of Ohio agencies  
Control by USGS and NOS/NOAA  
Topography by photogrammetric methods from aerial photography taken 1954. Field checked 1955. Revised 1965  
Polyconic projection. 10,000-foot grid ticks based on Ohio coordinate system, south zone. 1000-meter Universal Transverse Mercator grid ticks, zone 16, shown in blue. 1927 North American Datum. To place on the predicted North American Datum 1983 move the projection lines 2 meters south and 6 meters west as shown by dashed corner ticks  
Fine red dashed lines indicate selected fence and field lines where generally visible on aerial photographs. This information is unchecked  
Red tint indicates areas in which only landmark buildings are shown  
Areas covered by dashed light-blue pattern are subject to controlled inundation to 818 feet  
Area west of the Great Miami River lies within the Miami River Survey Area east of the Great Miami River lies within the Between the Miamis Land lines based on the Great Miami River Base  
There may be private inholdings within the boundaries of the National or State reservations shown on this map



ROAD CLASSIFICATION  
Heavy-duty ——— Light-duty ———  
Medium-duty ——— Unimproved dirt ———  
Interstate Route ——— U.S. Route ——— State Route ———



TIPP CITY, OHIO  
N3952.5—W8407.5/7.5  
1965  
PHOTOREVISED 1982  
DMA 4163 1 NW—SERIES V852

THIS MAP COMPLIES WITH NATIONAL MAP ACCURACY STANDARDS  
FOR SALE BY U.S. GEOLOGICAL SURVEY, RESTON, VIRGINIA 22092  
A FOLDER DESCRIBING TOPOGRAPHIC MAPS AND SYMBOLS IS AVAILABLE ON REQUEST

Revisions shown in purple and woodland compiled in cooperation with State of Ohio agencies from aerial photographs taken 1979 and other sources. This information not field checked. Map edited 1982

RETURN TO:  
USGS AND HISTORICAL MAP ARCHIVES

OCT 25 1982

2800