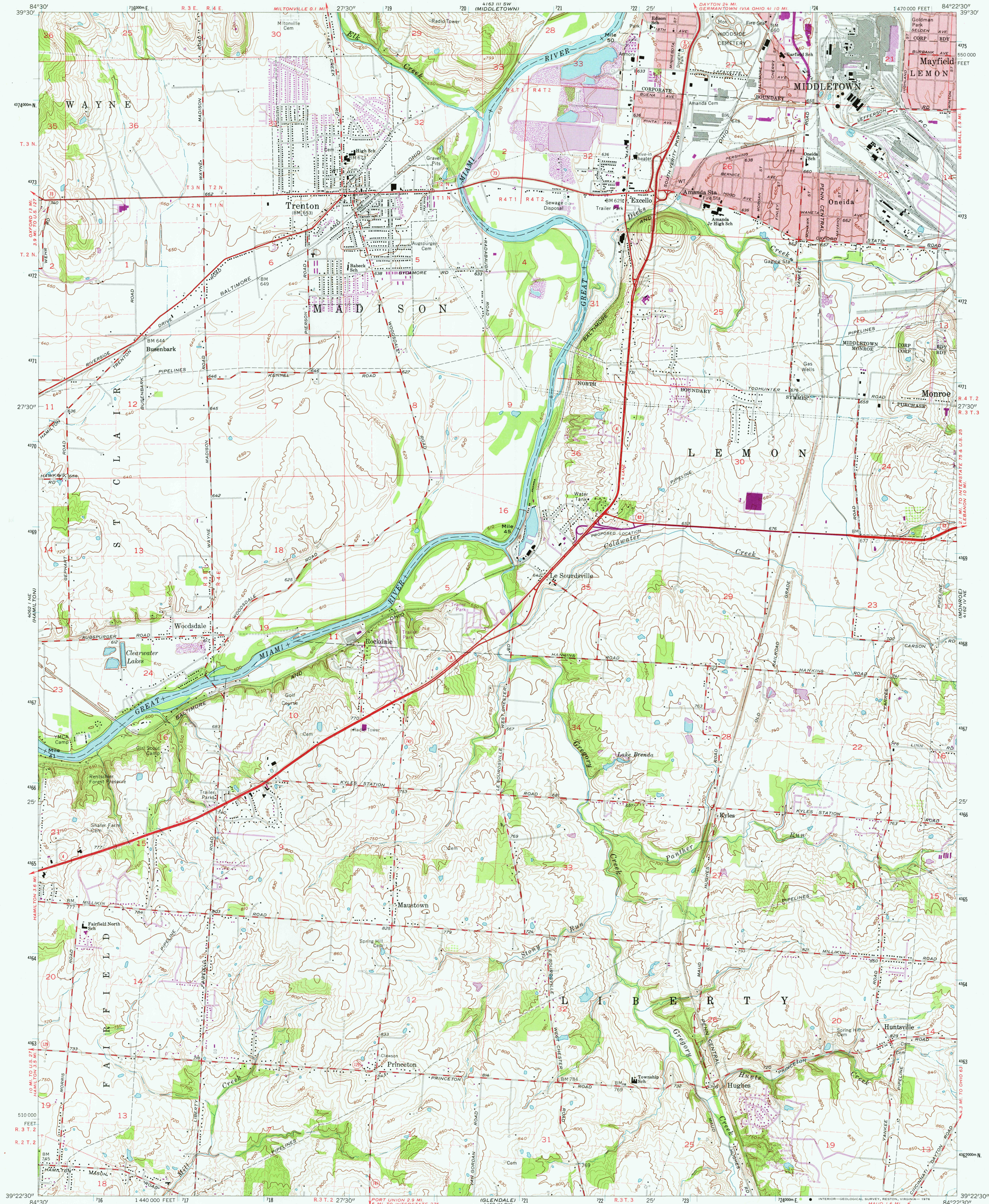
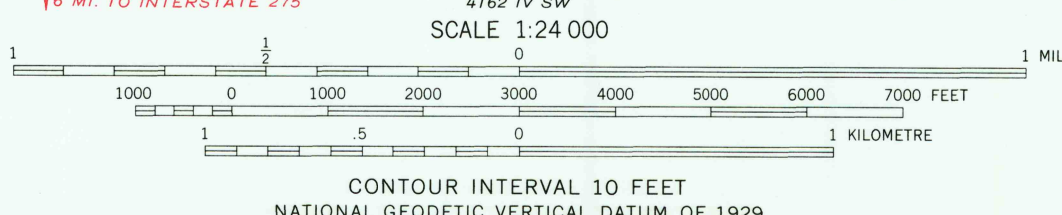
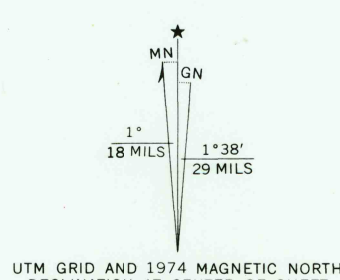


UNITED STATES
DEPARTMENT OF THE INTERIOR
GEOLOGICAL SURVEY

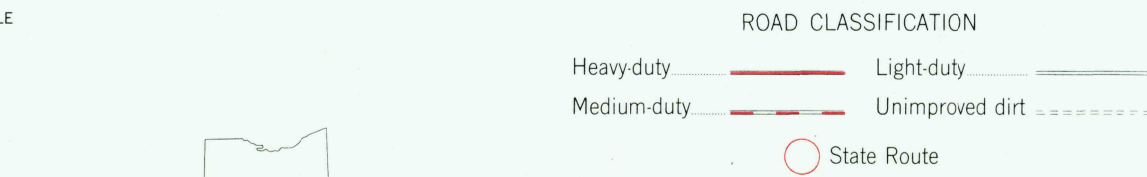
TRENTON QUADRANGLE
OHIO—BUTLER CO.
7.5 MINUTE SERIES (TOPOGRAPHIC)



Mapped, edited, and published by the Geological Survey in cooperation with the Army Map Service. Revised in cooperation with State of Ohio agencies. Control by USGS and USC&GS. Topography by photogrammetric methods from aerial photographs taken 1954. Field checked 1955. Revised 1966. Polyconic projection. 1927 North American datum. 10,000-foot grid based on Ohio coordinate system, south zone. 1000-metre Universal Transverse Mercator grid ticks, zone 16, shown in blue. Fine red dashed lines indicate selected fence and field lines where generally visible on aerial photographs. This information is unchecked. Red tint indicates areas in which only landmark buildings are shown. Area west of the Great Miami River lies within the Miami River Survey. Area east of the Great Miami River lies within the Between the Miamis Land lines based on the Great Miami River Base. Dotted land lines established by private subdivision of the Symmes Purchase.



THIS MAP COMPLIES WITH NATIONAL MAP ACCURACY STANDARDS FOR SALE BY U.S. GEOLOGICAL SURVEY, RESTON, VIRGINIA 22092. A FOLDER DESCRIBING TOPOGRAPHIC MAPS AND SYMBOLS IS AVAILABLE ON REQUEST.



Revisions shown in purple compiled in cooperation with State of Ohio agencies from aerial photographs taken 1974. This information not field checked. Purple tint indicates extension of urban areas.

USGS
Historical File
Topographic Division

TRENTON, OHIO
N3922.5-W8422.5/7.5
1966
PHOTOREVISED 1974
AMS 4162 IV NW-SERIES V852

APR 01 1976