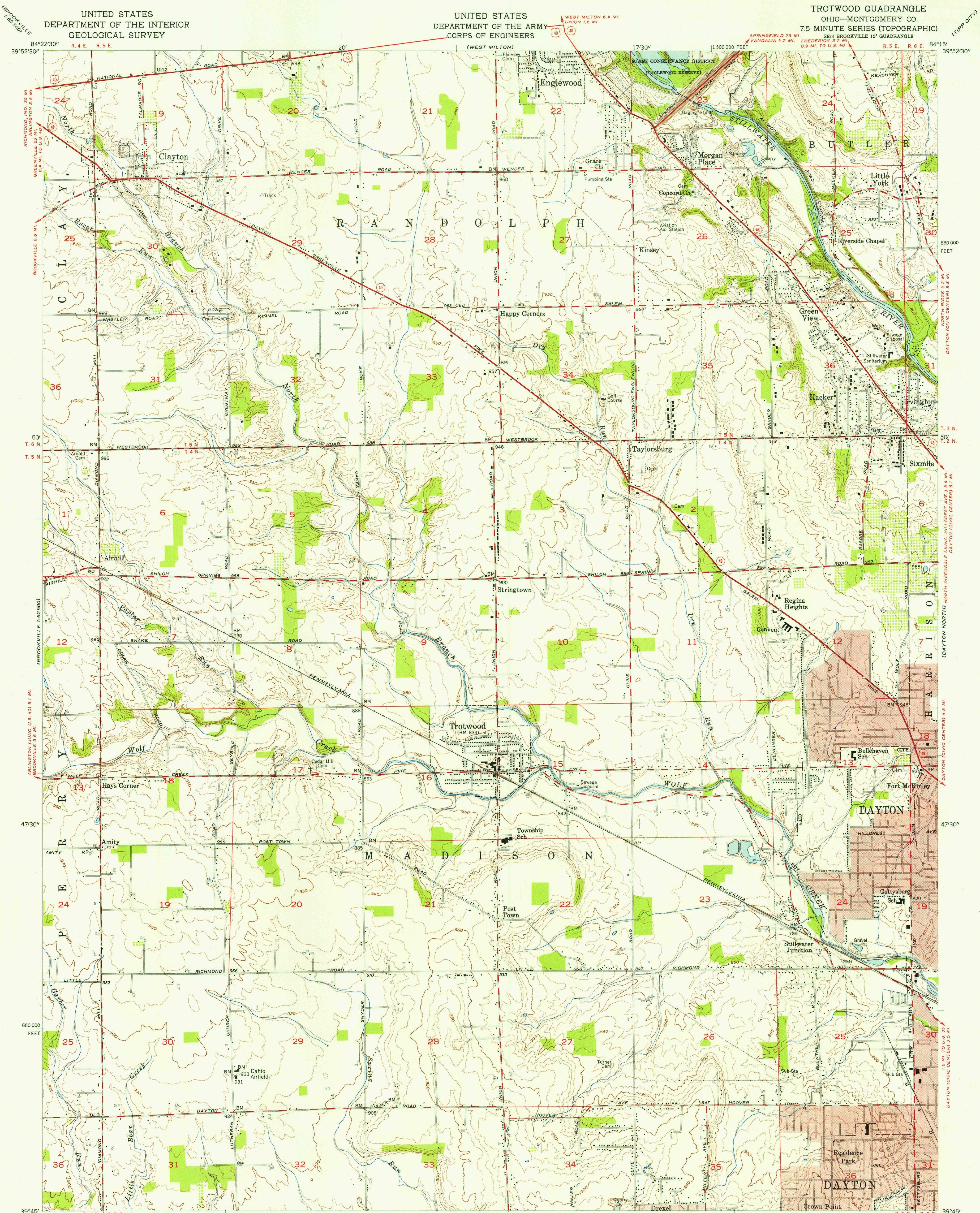


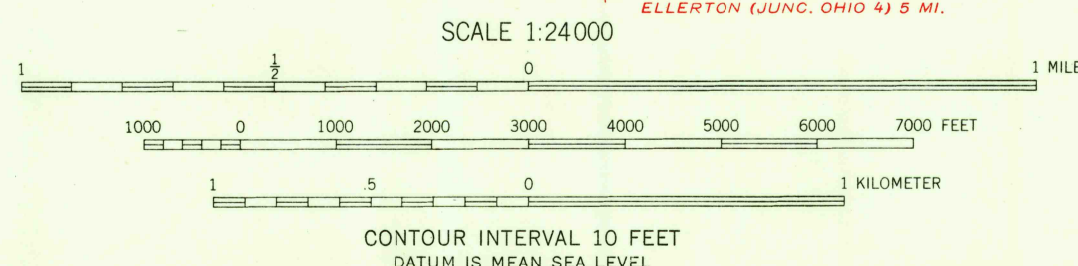
UNITED STATES
DEPARTMENT OF THE INTERIOR
GEOLOGICAL SURVEY

UNITED STATES
DEPARTMENT OF THE ARMY
CORPS OF ENGINEERS

TROTWOOD QUADRANGLE
OHIO—MONTGOMERY CO.
7.5 MINUTE SERIES (TOPOGRAPHIC)



Mapped, edited, and published by the Geological Survey
Control by USGS and USC&GS
Topography from aerial photographs by photogrammetric
methods. Aerial photographs taken 1954. Field check 1955
Polyconic projection. 1927 North American datum
10,000-foot grid based on Ohio coordinate system,
south zone
Red tint indicates areas in which only
landmark buildings are shown
Dashed blue lines indicate areas
subject to inundation to 876 feet
Land lines based on the Great Miami River Base



USGS
Historical File
Topographic Division



ROAD CLASSIFICATION
Heavy-duty ——— Light-duty ———
Medium-duty ——— Unimproved dirt ———
U.S. Route ——— State Route ———

TROTWOOD, OHIO
SE/4 BROOKVILLE 15' QUADRANGLE
N 5945—W 8415/7.5
1955

U.S.G.S.
FILE COPY
TOPOGRAPHIC DIVISION

AUG 28 1956

3680