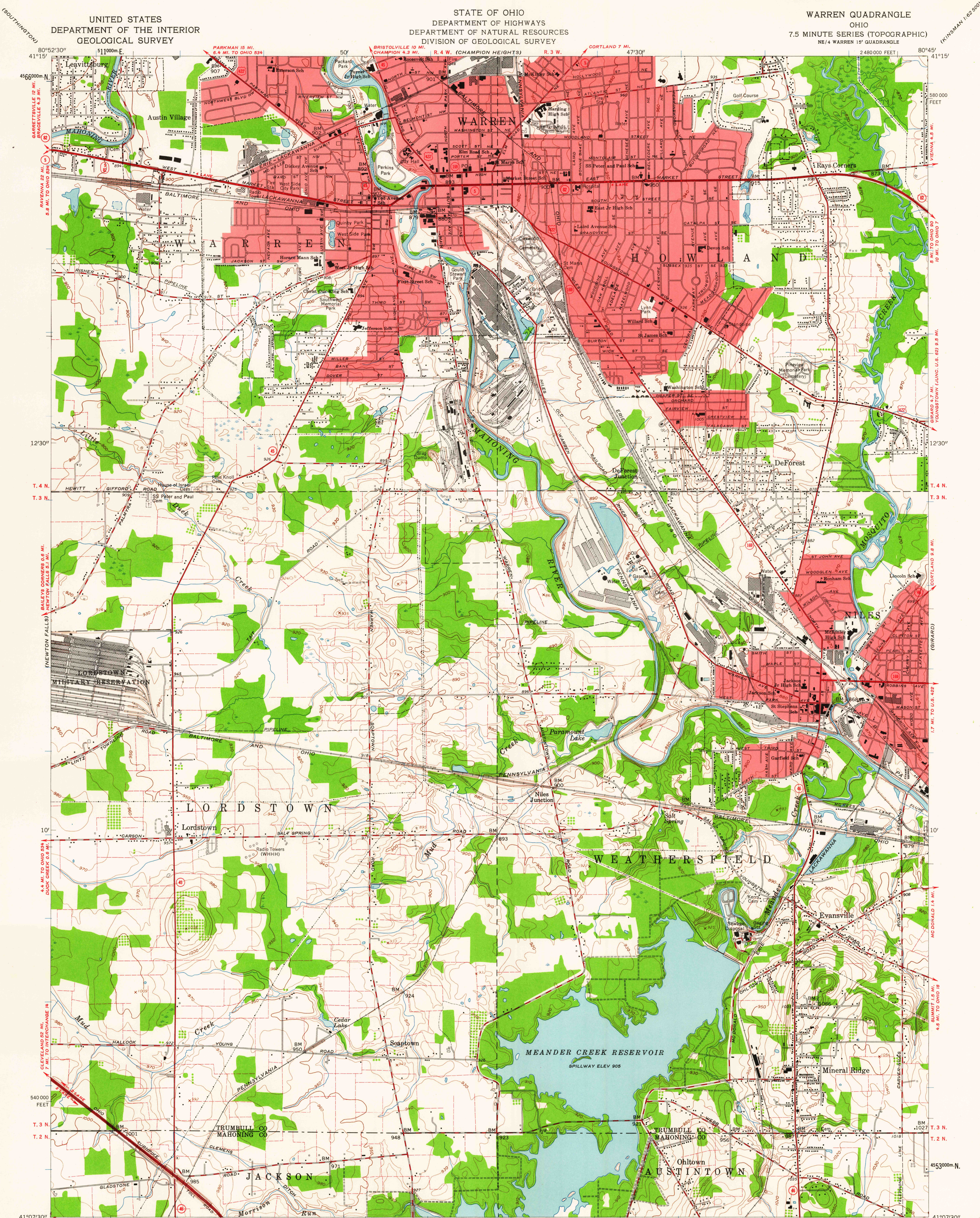


UNITED STATES
DEPARTMENT OF THE INTERIOR
GEOLOGICAL SURVEY

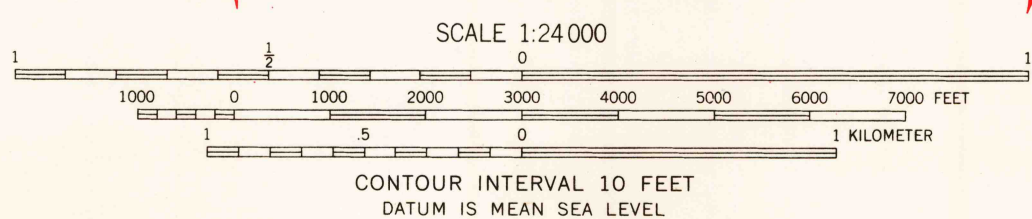
STATE OF OHIO
DEPARTMENT OF HIGHWAYS
DEPARTMENT OF NATURAL RESOURCES
DIVISION OF GEOLOGICAL SURVEY

WARREN QUADRANGLE
OHIO
7.5 MINUTE SERIES (TOPOGRAPHIC)

(KINSMAN 1:62,500)



Mapped, edited, and published by the Geological Survey
Control by USGS, USCGS, and USCE
Topography from aerial photographs by photogrammetric methods
Aerial photographs taken 1957. Field check 1959
Polyconic projection. 1927 North American datum
10,000-foot grid based on Ohio coordinate system, north zone
1000-meter Universal Transverse Mercator grid ticks,
zone 17, shown in blue
Fine red dashed lines indicate selected fence and field lines where
generally visible on aerial photographs. This information is unchecked
Red tint indicates areas in which only landmark buildings are shown
Entire area lies within the Connecticut Western Reserve
Land lines established by private subdivision of the
Connecticut Western Reserve



USGS
Historical File
Topographic Division

ROAD CLASSIFICATION
Heavy-duty ——— Light-duty ———
Medium-duty ——— Unimproved dirt ———
U.S. Route ——— State Route ———

WARREN, OHIO
NE 1/4 WARREN 15' QUADRANGLE
N4107.5-W8045/7.5

1959

USGS
FILE COPY
TOPOGRAPHIC DIVISION

JUL 14 1961

2990