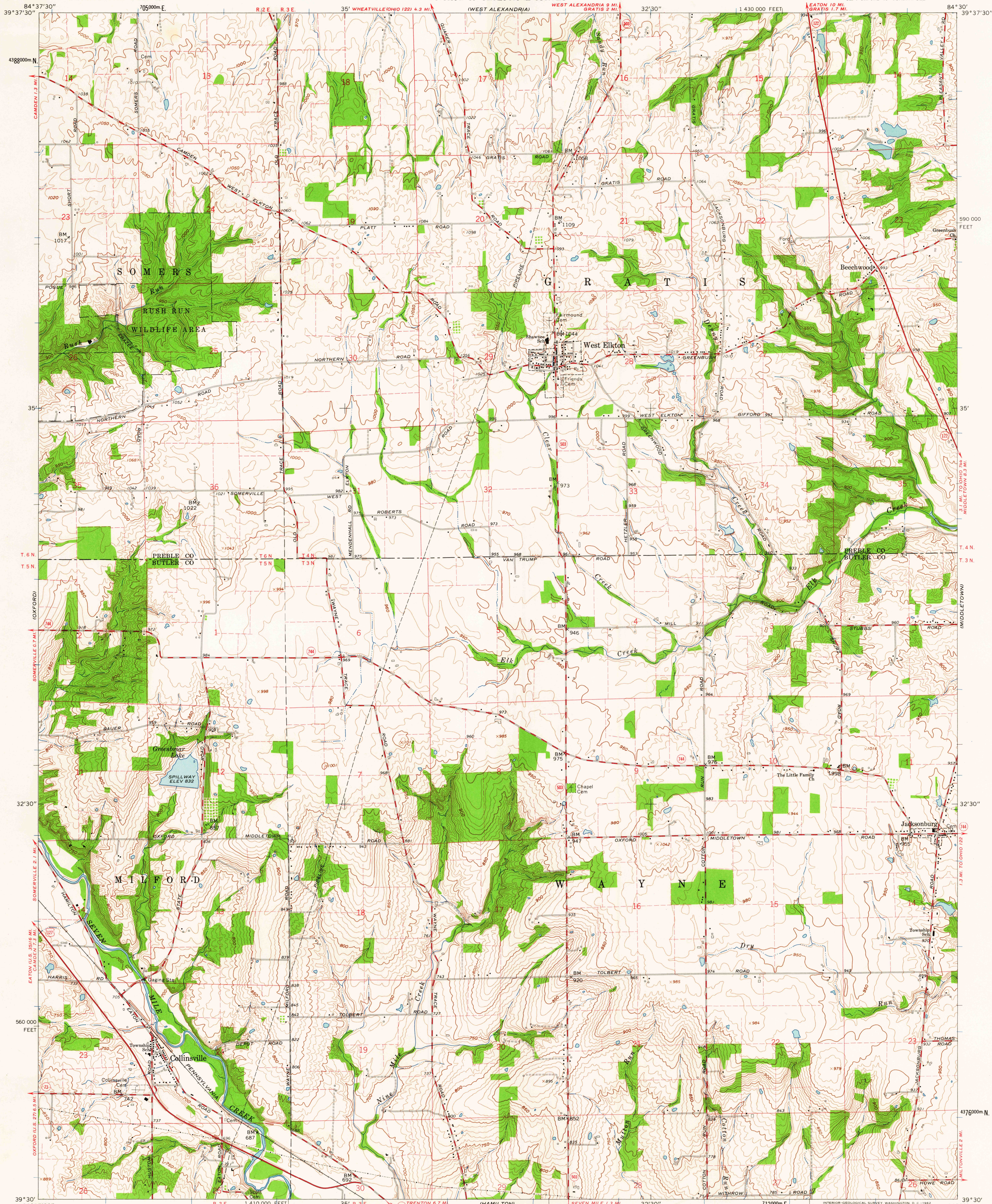


UNITED STATES
DEPARTMENT OF THE INTERIOR
GEOLOGICAL SURVEY

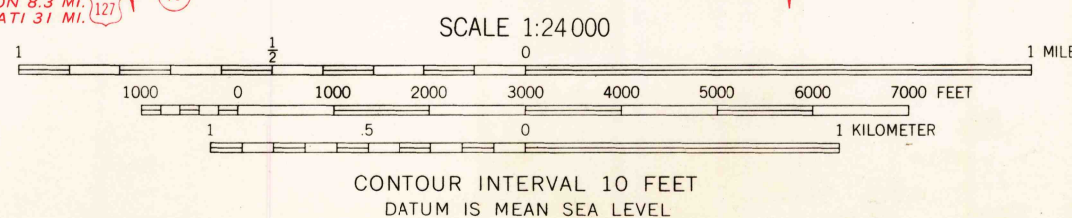
STATE OF OHIO
DEPARTMENT OF HIGHWAYS
DEPARTMENT OF NATURAL RESOURCES
DIVISION OF GEOLOGICAL SURVEY

WEST ELKTON QUADRANGLE
OHIO
7.5 MINUTE SERIES (TOPOGRAPHIC)



Mapped, edited, and published by the Geological Survey
Control by USGS and USC&GS
Topography by photogrammetric methods from aerial
photographs taken 1959. Field checked 1961
Polyconic projection. 1927 North American datum
10,000-foot grid based on Ohio coordinate system, south zone
1000-meter Universal Transverse Mercator grid ticks,
zone 16, shown in blue
Fine red dashed lines indicate selected fence and field lines where
generally visible on aerial photographs. This information is unchecked
Entire area lies within the Miami River Survey
Land lines based on the Great Miami River Base

MAGNETIC NORTH
TRUE NORTH
APPROXIMATE MEAN
DECLINATION, 1961



USGS
Historical File
Topographic Division



ROAD CLASSIFICATION
Heavy-duty ——— Light-duty ———
Medium-duty ——— Unimproved dirt ———
U.S. Route ——— State Route ———

WEST ELKTON, OHIO
SE/4 OXFORD 15' QUADRANGLE
N3930-W8430/7.5

1961

DEC 12 1962

2685