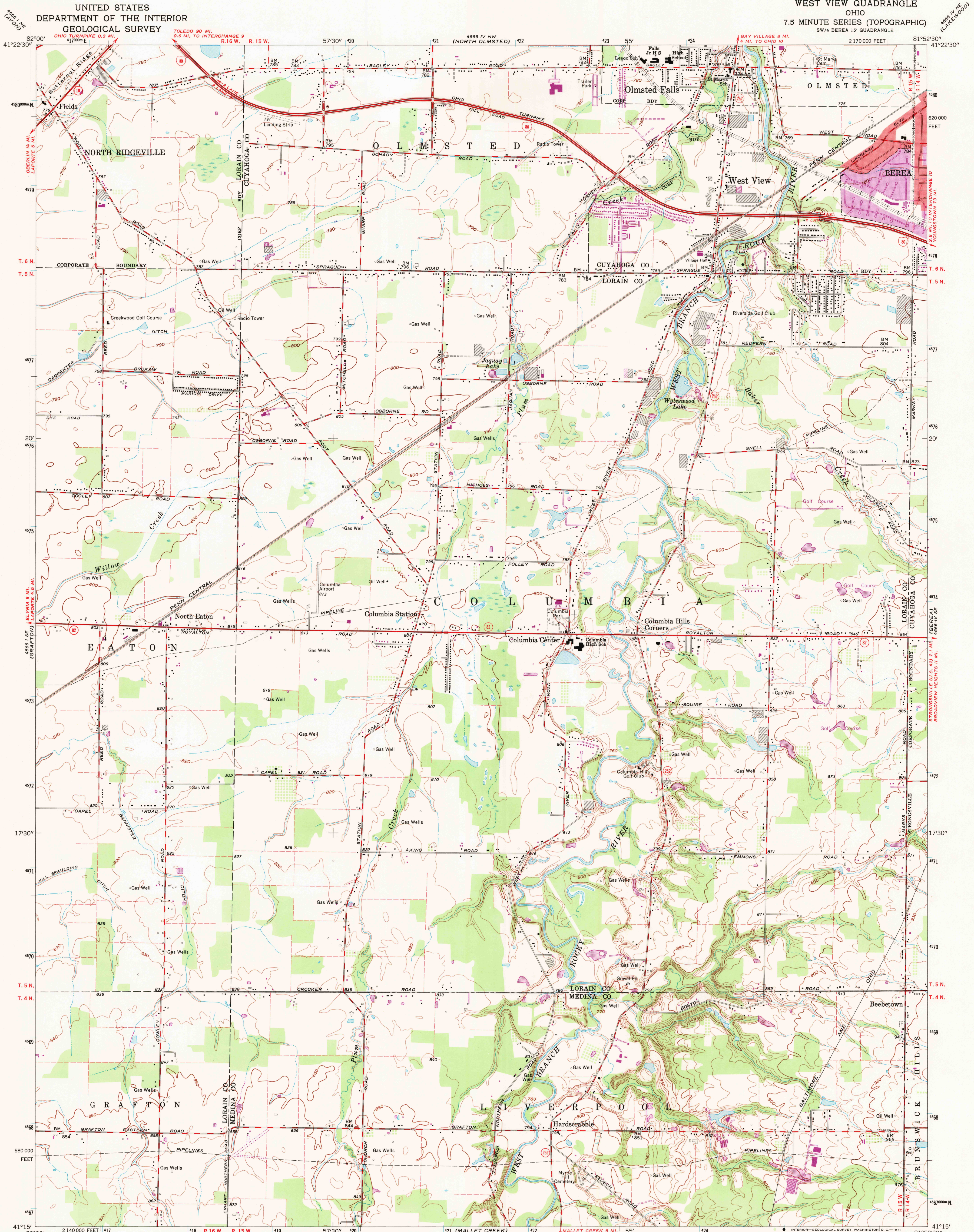
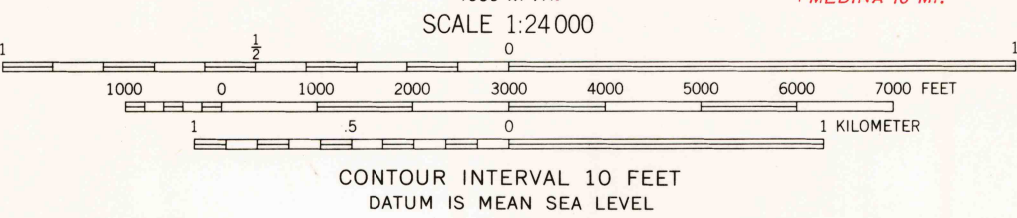


UNITED STATES  
DEPARTMENT OF THE INTERIOR  
GEOLOGICAL SURVEY

WEST VIEW QUADRANGLE  
OHIO  
7.5 MINUTE SERIES (TOPOGRAPHIC)  
SW/4 BERA 15' QUADRANGLE



Mapped, edited, and published by the Geological Survey  
Revised in cooperation with State of Ohio agencies  
Control by USGS, USC&GS, and Cleveland Regional Geodetic Survey  
Planimetry by photogrammetric methods from aerial photographs  
taken 1952. Topography by plane-table surveys 1953. Revised  
from aerial photographs taken 1962. Field checked 1963  
Polyconic projection. 1927 North American datum  
10,000-foot grid based on Ohio coordinate system, north zone  
1000-meter Universal Transverse Mercator grid ticks,  
zone 17, shown in blue  
Fine red dashed lines indicate selected fence and field lines where  
generally visible on aerial photographs. This information is unchecked  
Red tint indicates area in which only landmark buildings are shown  
Entire area lies within the Connecticut Western Reserve  
Dotted land lines established by private subdivision of  
the Connecticut Western Reserve



USGS  
Historical File  
Topographic Division

ROAD CLASSIFICATION	
Heavy-duty	Light-duty
Medium-duty	Unimproved dirt
Interstate Route	State Route



THIS MAP COMPLIES WITH NATIONAL MAP ACCURACY STANDARDS  
FOR SALE BY U. S. GEOLOGICAL SURVEY, WASHINGTON, D. C. 20242  
A FOLDER DESCRIBING TOPOGRAPHIC MAPS AND SYMBOLS IS AVAILABLE ON REQUEST

Revisions shown in purple compiled in cooperation with  
State of Ohio agencies from aerial photographs taken  
1970. This information not field checked  
Purple tint indicates extension of urban area

WEST VIEW, OHIO  
SW/4 BERA 15' QUADRANGLE  
N4115-W8152.5/7.5  
1963  
PHOTO-REVISED 1970  
AMS 4666 IV SW-SERIES V852

MAY 19 1971

U.S.G.S.

FILE COPY