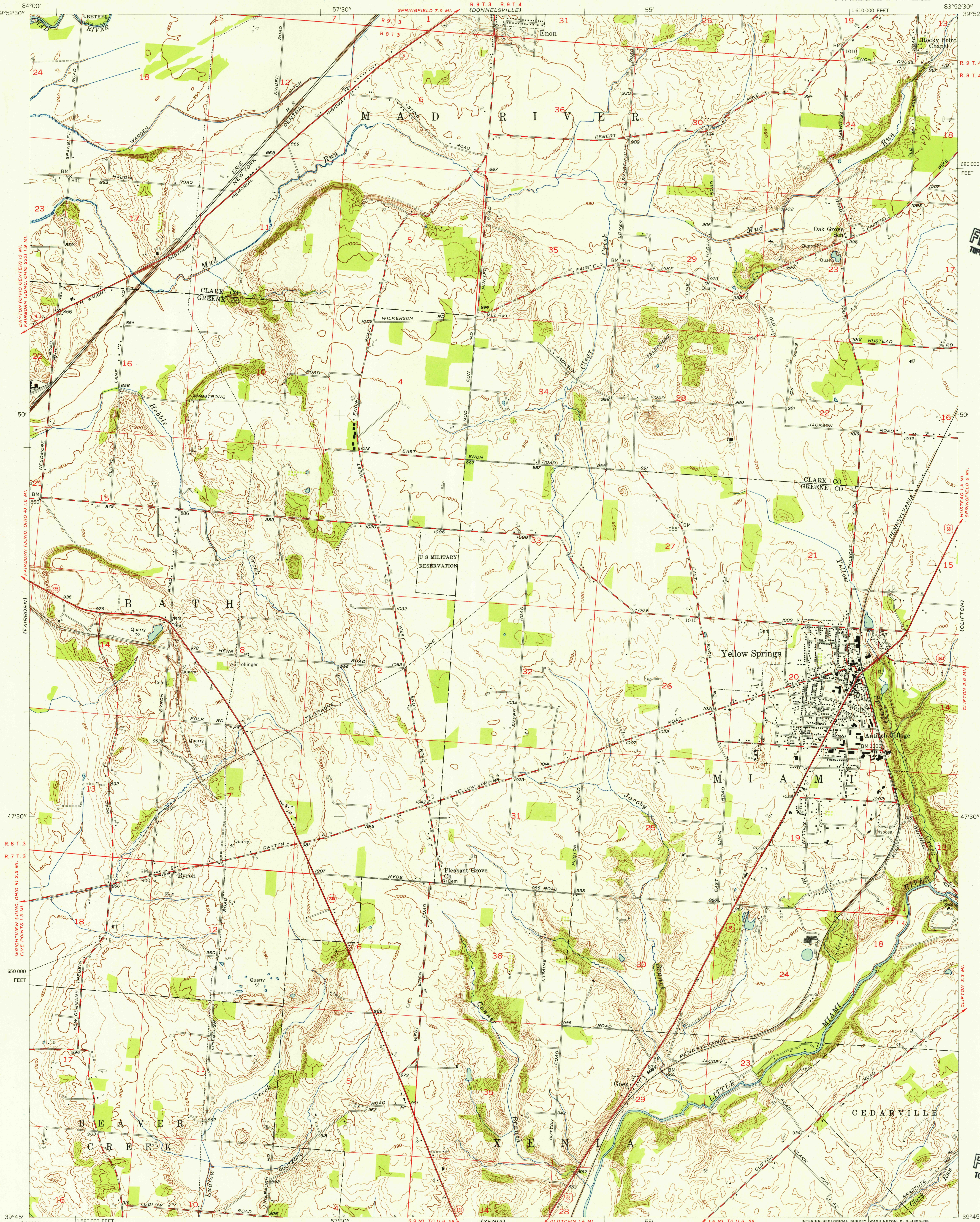
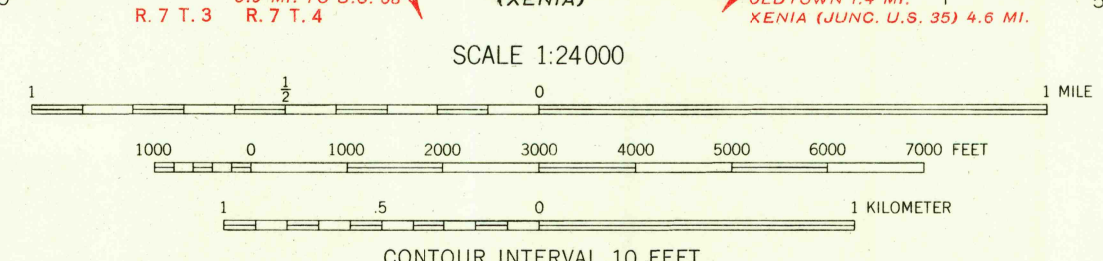


U.S.G.S.
FILE COPY
TOPOGRAPHIC DIVISION

U.S.G.S.
FILE COPY
TOPOGRAPHIC DIVISION



Mapped, edited, and published by the Geological Survey
Control by USGS and USC&GS
Topography from aerial photographs by Kelsch plotter
Aerial photographs taken 1954. Field check 1955
Polyconic projection. 1927 North American datum
10,000-foot grid based on Ohio coordinate system,
south zone
Land lines west of the Little Miami River based
on the Great Miami River Base
Area east of the Little Miami River lies within
the Virginia Military District
Broken blue lines indicate areas subject to inundation



ROAD CLASSIFICATION

Heavy-duty	Light-duty
Medium-duty	Unimproved dirt
U.S. Route	State Route

YELLOW SPRINGS, OHIO
SW 1/4 SPRINGFIELD 15' QUADRANGLE
N 3945—W 8352.5/7.5

1955

THIS MAP COMPLIES WITH NATIONAL MAP ACCURACY STANDARDS
FOR SALE BY U. S. GEOLOGICAL SURVEY, WASHINGTON 25, D. C.
A FOLDER DESCRIBING TOPOGRAPHIC MAPS AND SYMBOLS IS AVAILABLE ON REQUEST

AUG 1 1956
2665