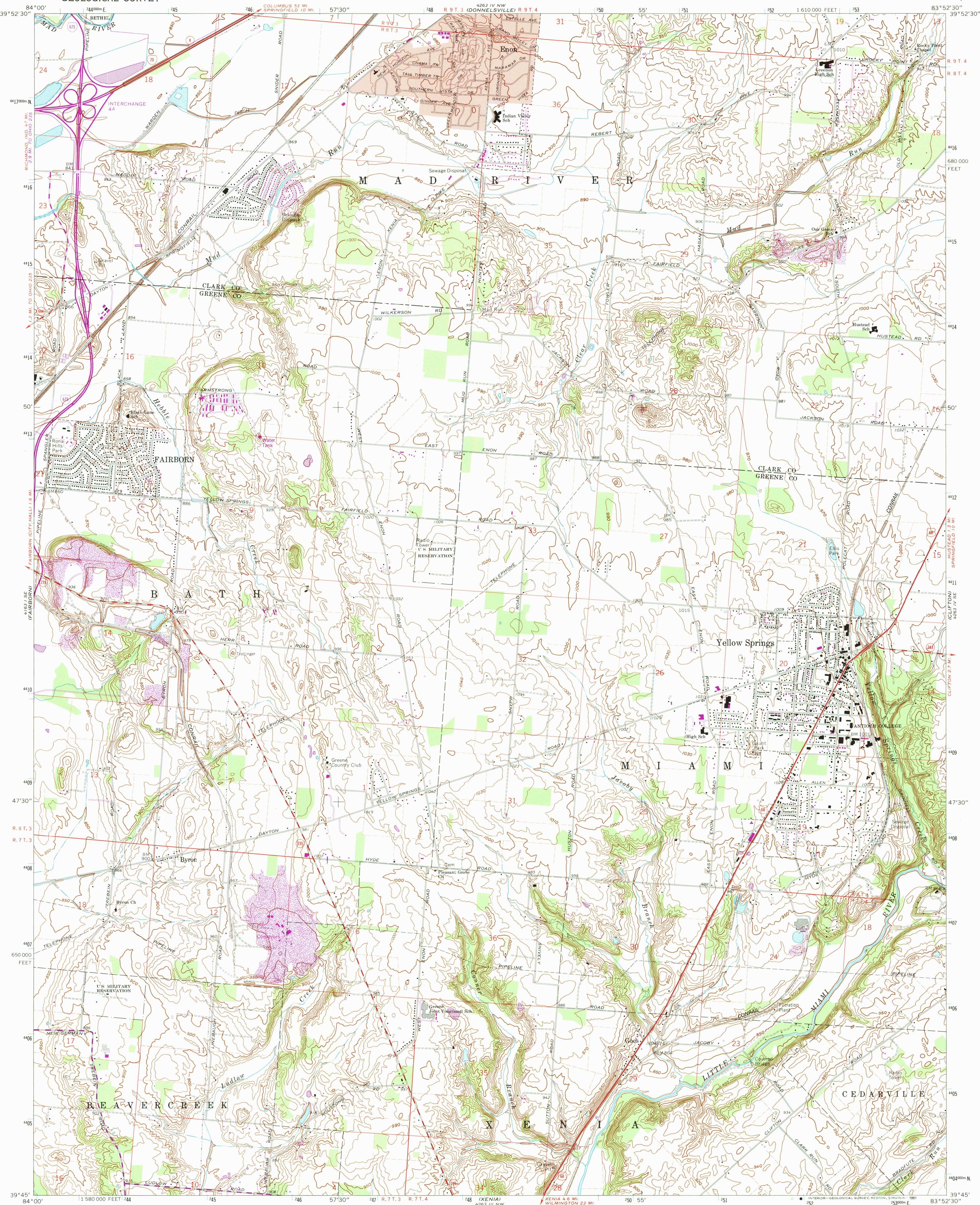


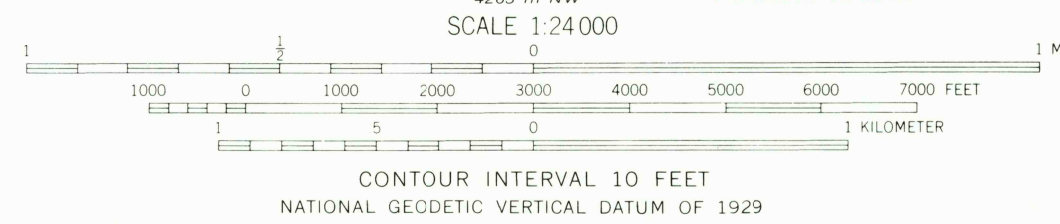
UNITED STATES  
DEPARTMENT OF THE INTERIOR  
GEOLOGICAL SURVEY

YELLOW SPRINGS QUADRANGLE  
OHIO  
7.5 MINUTE SERIES (TOPOGRAPHIC)



Maped, edited, and published by the Geological Survey  
in cooperation with the Army Map Service  
Revised in cooperation with State of Ohio agencies  
Control by USGS and USC&GS  
Topography by photogrammetric methods from aerial photographs  
taken 1954. Field checked 1955. Revised from aerial  
photographs taken 1968. Field checked 1968  
Polyconic projection. 1927 North American datum  
10,000-foot grid based on Ohio coordinate system, south zone  
1000-meter Universal Transverse Mercator grid ticks, zone 17, shown in blue  
Fine red dashed lines indicate selected fence and field lines where  
generally visible on aerial photographs. This information is unchecked  
Red tint indicates area in which only landmark buildings are shown  
Areas covered by light-blue dashed pattern are subject to controlled inundation  
to 835 feet by Huffman Dam  
Area east of the Little Miami River lies within the Virginia Military  
District. Area west of the Little Miami River lies within the  
Between the Miamis. Land lines based on the Great Miami River Base

UTM GRID AND 1975 MAGNETIC NORTH  
DECLINATION AT CENTER OF SHEET  
Map photospected 1984  
No major culture or drainage changes observed



THIS MAP COMPLIES WITH NATIONAL MAP ACCURACY STANDARDS  
FOR SALE BY U.S. GEOLOGICAL SURVEY  
DENVER, COLORADO 80225, OR RESTON, VIRGINIA 22092  
A FOLDER DESCRIBING TOPOGRAPHIC MAPS AND SYMBOLS IS AVAILABLE ON REQUEST

Revisions shown in purple compiled in cooperation with  
State of Ohio agencies from aerial photographs taken  
1975. This information not field checked

ROAD CLASSIFICATION  
Primary highway, all weather. Light-duty road, all weather.  
hard surface. improved surface  
Secondary highway, all weather. Unimproved road, fair or dry  
hard surface. weather  
Interstate Route U.S. Route State Route

YELLOW SPRINGS, OHIO

N3945-W8352 5/7.5  
PHOTOINSPECTED 1984  
1968  
PHOTOREVISED 1975  
AMS 4263 IV SW-SERIES V852

USGS NHD HISTORICAL MAP

JUL 2 1991

REC'D FILE COPY