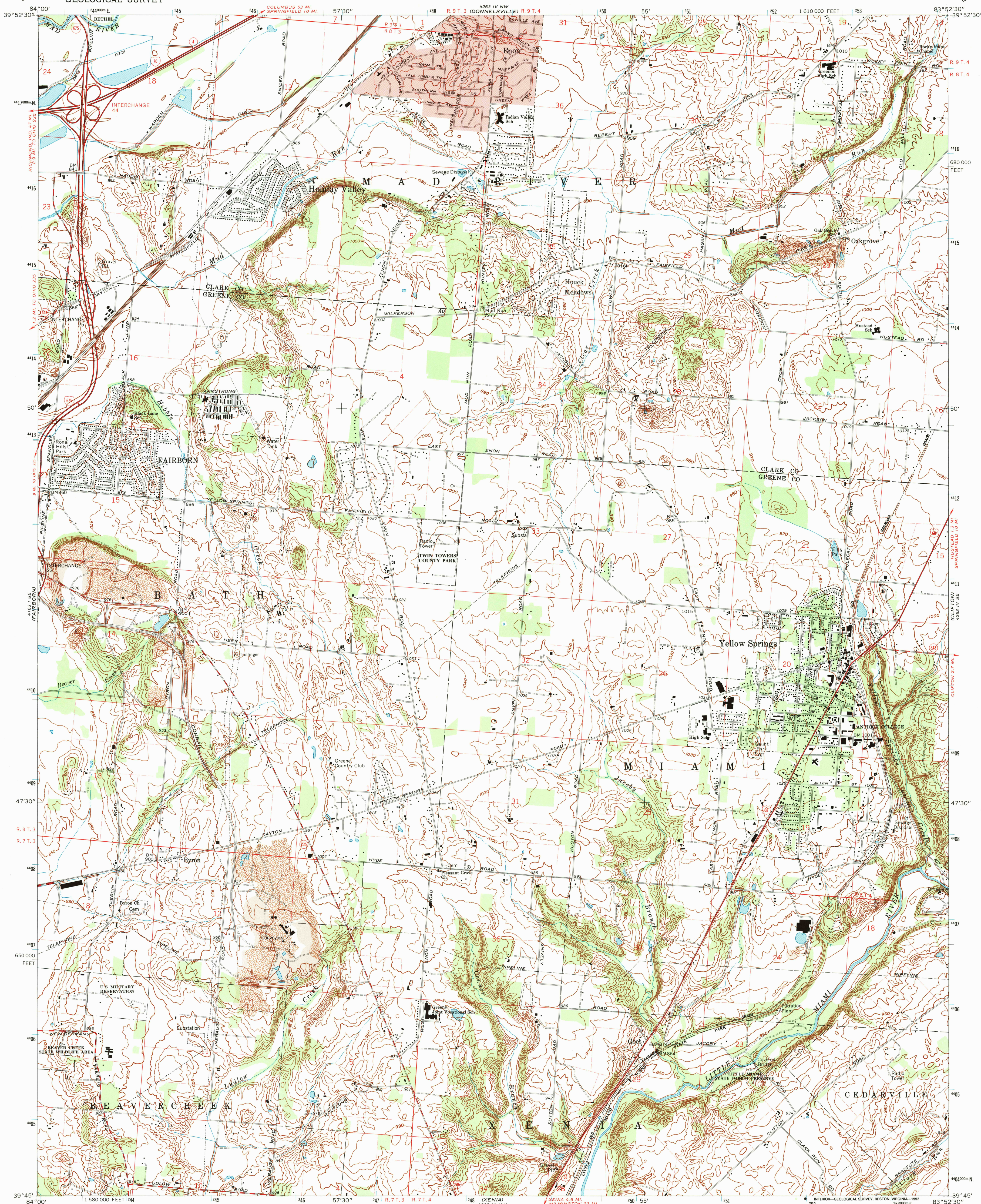
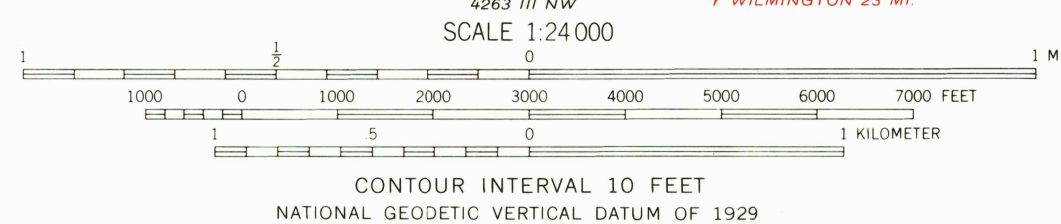


UNITED STATES  
DEPARTMENT OF THE INTERIOR  
GEOLOGICAL SURVEY

YELLOW SPRINGS QUADRANGLE  
OHIO  
7.5 MINUTE SERIES (TOPOGRAPHIC)



Mapped, edited, and published by the Geological Survey in cooperation with the Army Map Service. Revised in cooperation with State of Ohio agencies. Control by USGS and USC&GS. Topography by photogrammetric methods from aerial photographs taken 1954. Field checked 1955. Revised from aerial photographs taken 1968. Field checked 1968. Polyconic projection. 1927 North American datum. 10,000-foot grid based on Ohio coordinate system, south zone 1000-meter Universal Transverse Mercator grid ticks, zone 17, shown in blue. The difference between 1927 North American Datum and North American Datum of 1983 (NAD 83) for 7.5-minute intersections is given in USGS Bulletin 1875. The NAD 83 is shown by dashed corner ticks. Area east of the Little Miami River lies within the Virginia Military District. Area west of the Little Miami River lies within the Between the Miamis. Land lines based on the Great Miami River Base.



**ROAD CLASSIFICATION**  
Primary highway, all weather, Light-duty road, all weather, hard surface, improved surface  
Secondary highway, all weather, Unimproved road, fair or dry hard surface, weather  
Interstate Route U. S. Route State Route

**YELLOW SPRINGS, OHIO**  
39083-G8-TF-024

1968  
REVISED 1992  
DMA 4263 IV SW - SERIES V852

THIS MAP COMPLIES WITH NATIONAL MAP ACCURACY STANDARDS  
FOR SALE BY U. S. GEOLOGICAL SURVEY  
DENVER, COLORADO 80225 OR RESTON, VIRGINIA 22092  
A FOLDER DESCRIBING TOPOGRAPHIC MAPS AND SYMBOLS IS AVAILABLE ON REQUEST

Revisions compiled in cooperation with State of Ohio agencies from aerial photographs taken 1988 and other sources. Contours not revised. This information not field checked. Map edited 1992.

USGS HISTORICAL  
MAP ARCHIVES  
OCT 05 1992  
REC'D FILE COPY