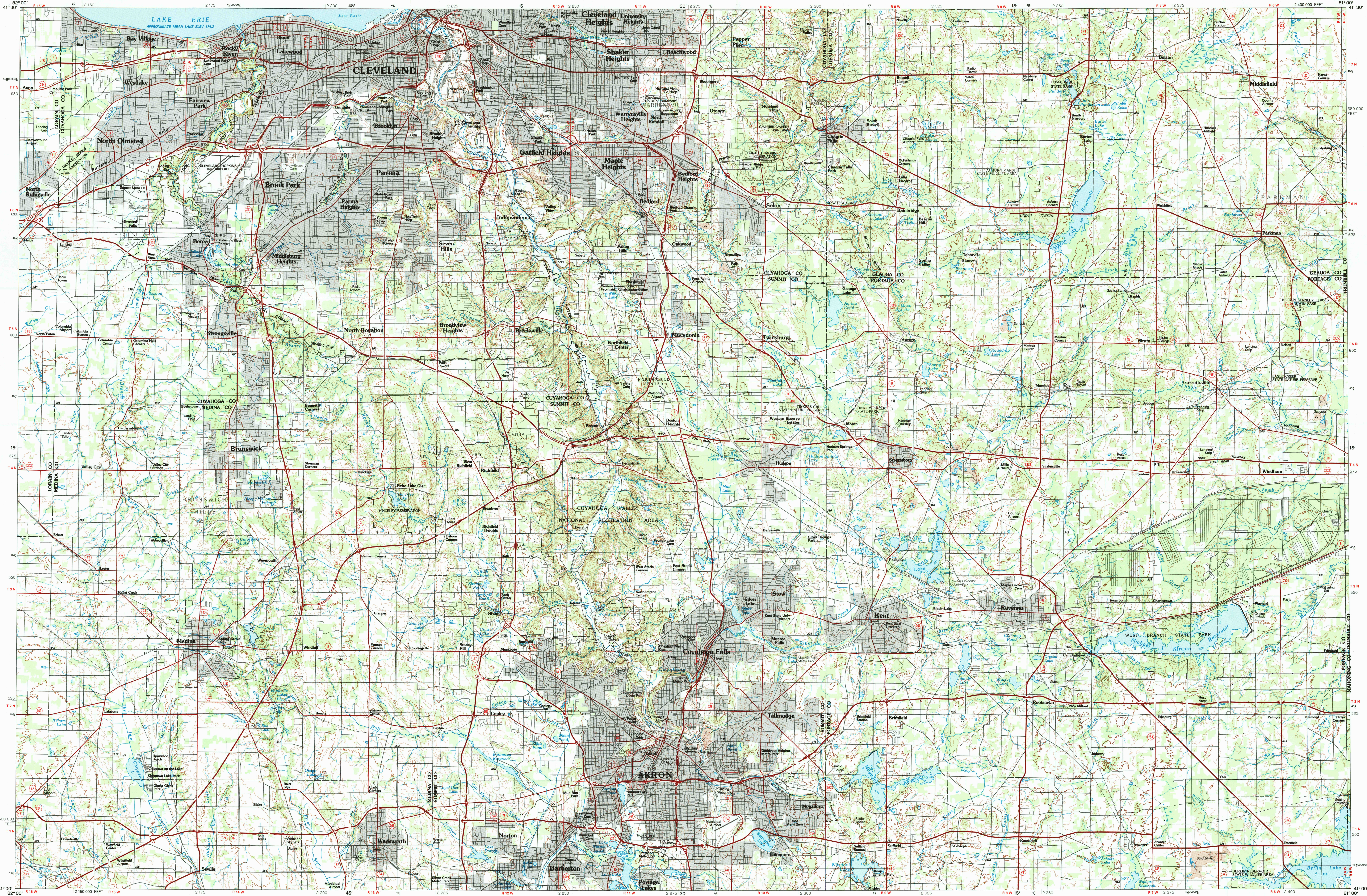


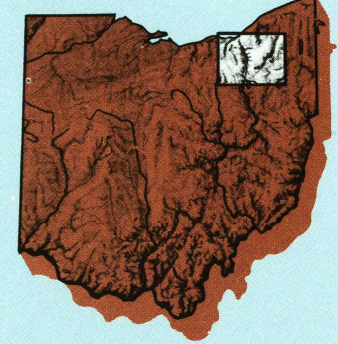
CLEVELAND SOUTH, OHIO

30 X 60 MINUTE SERIES (TOPOGRAPHIC)



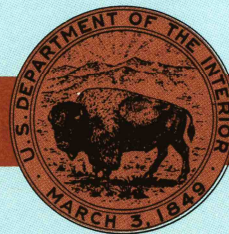
Cleveland South OHIO

1:100 000-scale metric topographic map



30 X 60 MINUTE QUADRANGLE SHOWING

- Contours and elevations in meters
- Highways, roads and other manmade structures
- Water features
- Woodland areas
- Geographic names



GEOLOGICAL SURVEY

1994/94

Produced by the United States Geological Survey
Compiled from USGS 1:24 000- and 1:62 500-scale topographic maps dated 1959-1979. Planimetry revised from aerial photographs taken 1988-91 and other source data. Revised information not field checked. Map edited 1994.
North American Datum of 1927 (NAD 27). Projection and 10 000-meter grid: Universal Transverse Mercator, zone 17 25 000-foot ticks: Ohio coordinate system, north zone
The values of the shift between NAD 27 and North American Datum of 1983 (NAD 83) for 7.5-minute intersections are obtainable from National Geodetic Survey NADCON software
There may be private inholdings within the boundaries of the National or State reservations shown on this map

CONTOUR INTERVAL 10 METERS
NATIONAL GEODETIC VERTICAL DATUM OF 1929
ELEVATIONS SHOWN TO THE NEAREST METER

THIS MAP COMPLIES WITH NATIONAL MAP ACCURACY STANDARDS

CONVERSION TABLE

Meters	Feet
1	3.2808
2	6.5617
3	9.8425
4	13.1234
5	16.4042
6	19.6850
7	22.9659
8	26.2467
9	29.5276
10	32.8084

To convert meters to feet multiply by 3.2808

To convert feet to meters multiply by 0.3048

DECLINATION DIAGRAM

UTM grid convergence (GN) and 100N magnetic declination (MN) at center of map

Diagram is approximate

ADJOINING MAPS

1	2	3
4	5	
6	7	8

1 Put-In-Bay

2 Cleveland North

3 Ashland

4 Lorain

5 Youngstown

6 Mansfield

7 Canton

8 East Liverpool

FOR SALE BY U.S. GEOLOGICAL SURVEY
DENVER, COLORADO 80225, OR RESTON, VIRGINIA 22092

Topographic Map Symbols

Primary highway, hard surface	
Secondary highway, hard surface	
Light duty road, principal street, hard or improved surface	
Other road or street; trail	
Route marker: Interstate; U.S.; State	
Railroad: standard gage; narrow gage	
Bridge: overpass; underpass	
Tunnel: road; railroad	
Built up area, locality, elevation	
Airport; landing field; landing strip	
National boundary	
State boundary	
County boundary	
National or State reservation boundary	
Land grant boundary	
U.S. public lands survey: range, township, section	
Range, township; section line: protracted	
Power transmission line; pipeline	
Dam; dam with lock	
Cemetery; building	
Windmill; water well; spring	
Mine shaft; adit or cave; mine, quarry; gravel pit	
Camaground; picnic area; U.S. location monument	
Ruins; cliff dwelling	
Disturbed surface: strip mine, lava; sand	
Contours: index; intermediate; supplementary	
Bathymetric contours: index; intermediate	
Stream, lake; perennial; intermittent	
Rapids, large and small; falls, large and small	
Area to be submerged; marsh, swamp	
Land subject to controlled inundation; woodland	
Scrub; mangrove	
Orchard; vineyard	

A pamphlet describing topographic maps is available on request

RETURN TO:
USGS AND HISTORICAL MAP ARCHIVES

CLEVELAND SOUTH, OHIO

41081-A1-TM-100

1994