

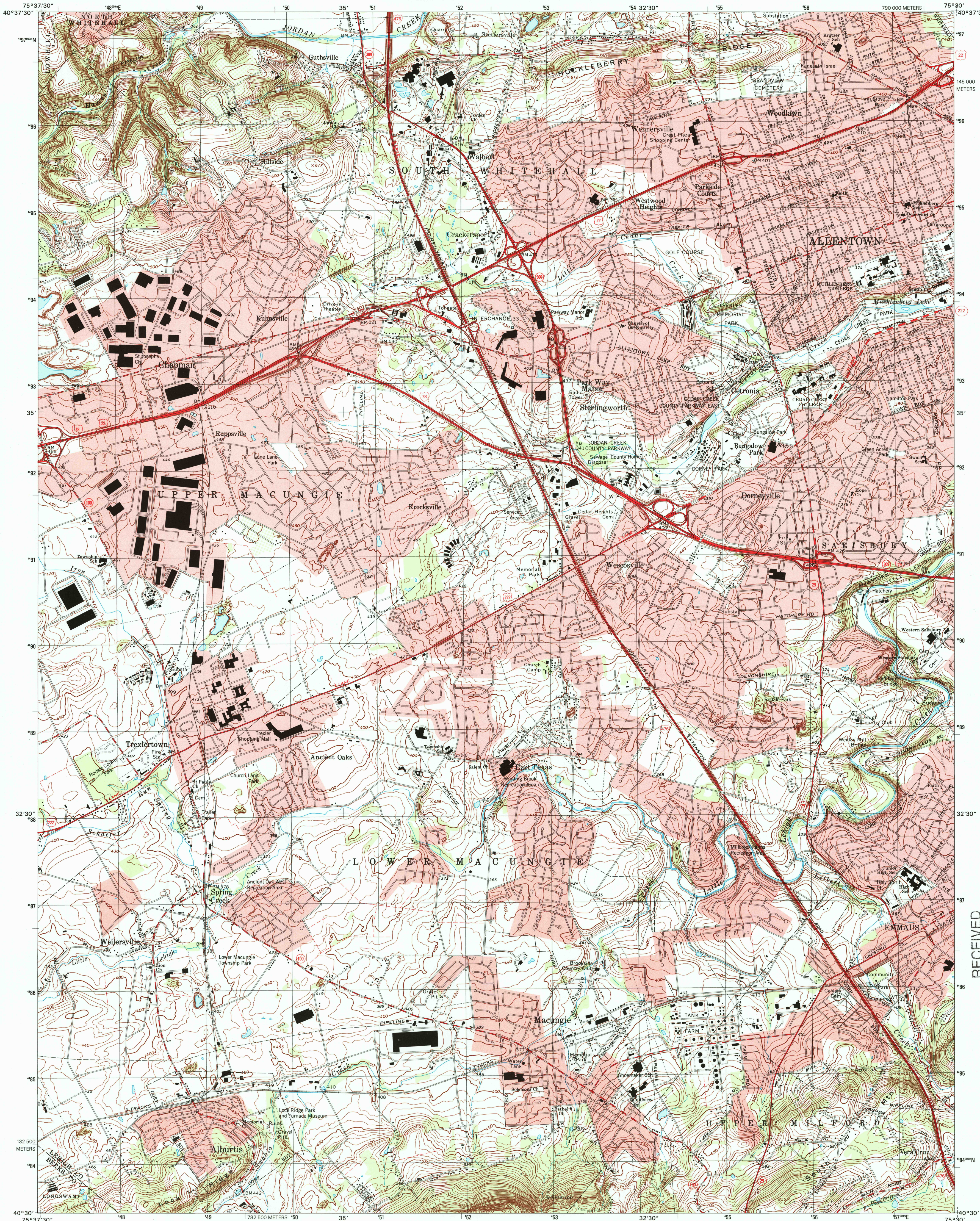


U.S. DEPARTMENT OF THE INTERIOR  
U.S. GEOLOGICAL SURVEY

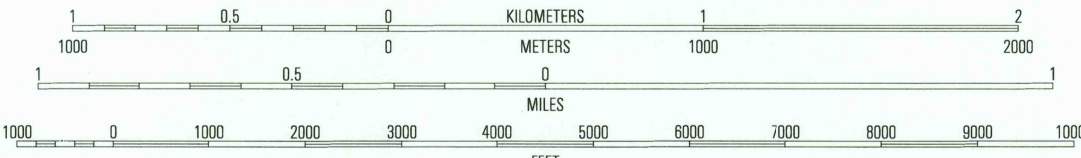
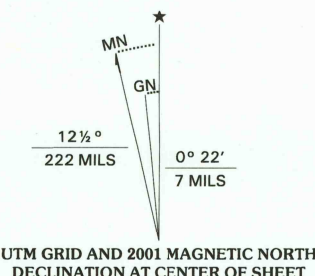


COMMONWEALTH OF PENNSYLVANIA  
DEPARTMENT OF CONSERVATION AND NATURAL RESOURCES  
BUREAU OF TOPOGRAPHIC AND GEOLOGIC SURVEY

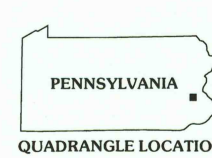
ALLENTOWN WEST QUADRANGLE  
PENNSYLVANIA  
7.5-MINUTE SERIES (TOPOGRAPHIC)



Produced by the United States Geological Survey  
in cooperation with Pennsylvania Department of  
Conservation and Natural Resources, Bureau of  
Topographic and Geologic Survey  
Topography compiled 1999. Planimetry derived from imagery  
taken 1999 and other sources. Survey control current as of 1964.  
Boundaries current as of 2001.  
North American Datum of 1983 (NAD 83). Projection and  
1 000-meter grid: Universal Transverse Mercator, zone 18  
2 500-meter ticks: Pennsylvania Coordinate System of 1983  
(south zone).  
North American Datum of 1927 (NAD 27) is shown by dashed  
corner ticks. The values of the shift between NAD 83 and  
NAD 27 for 7.5-minute intersections are obtainable from  
National Geodetic Survey NADCON software.  
Houses of worship, schools, and other labeled buildings verified 1964.



CONTOUR INTERVAL 10 FEET  
NATIONAL GEODETIC VERTICAL DATUM OF 1929  
(TO CONVERT ELEVATIONS TO THE NORTH AMERICAN VERTICAL DATUM OF 1988, SUBTRACT 1 FOOT)  
TO CONVERT FROM FEET TO METERS, MULTIPLY BY 0.3048



ROAD CLASSIFICATION  
Primary highway  
hard surface .....  
Secondary highway  
hard surface .....  
Light-duty road, hard or  
improved surface .....  
Unimproved road .....  
Interstate Route  
U.S. Route  
State Route

1	2	3	1 Slatetown
4	5	2 Catonsville	4 Tipton
6	7	5 Allentown East	6 Manassas
		7 East Greenville	8 Millford Square

ALLENTOWN WEST, PA  
1999

NIMA 5865 II SE-SERIES V831

RECEIVED  
AUG 3 1 2001

USGS WIL  
HISTORICAL MAP ARCHIVES

