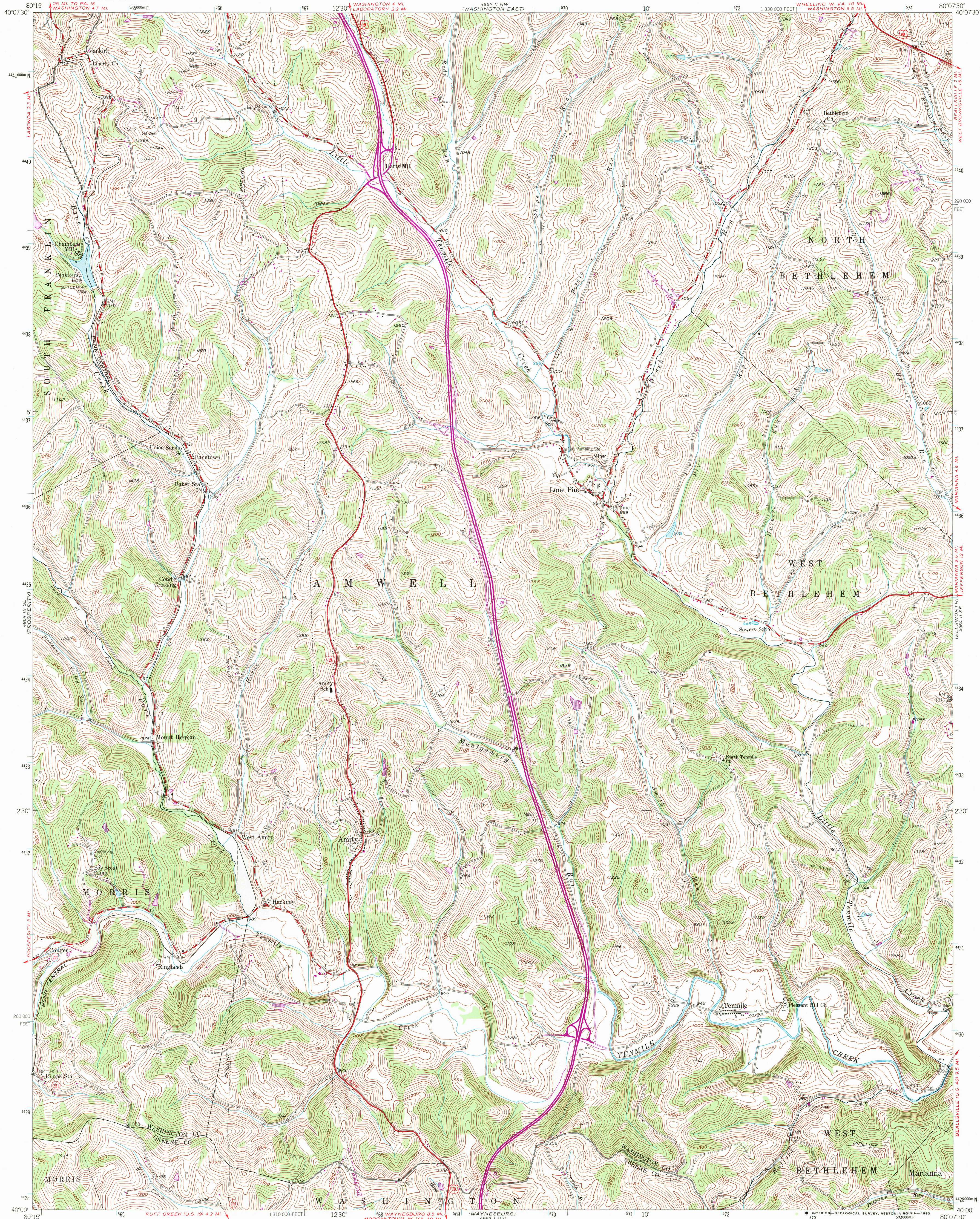


UNITED STATES  
DEPARTMENT OF THE INTERIOR  
GEOLOGICAL SURVEY

AMITY QUADRANGLE  
PENNSYLVANIA  
7.5 MINUTE SERIES (TOPOGRAPHIC)  
SW 1/4 AMITY IS QUADRANGLE



Mapped, edited, and published by the Geological Survey

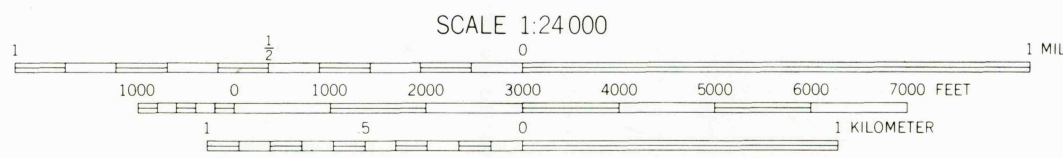
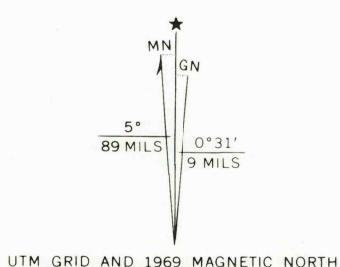
Control by USGS and USC&GS

Topography from aerial photographs by multiplex methods  
Aerial photographs taken 1952. Field check 1954

Polyconic projection. 1927 North American datum  
10,000-foot grid based on Pennsylvania coordinate system,  
south zone  
1000-meter Universal Transverse Mercator grid ticks, zone 17,  
shown in blue

All wells are gas wells unless otherwise indicated

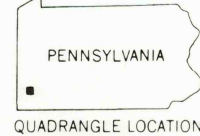
Revisions shown in purple compiled in cooperation with  
State of Pennsylvania agencies, from aerial photographs taken 1969  
This information not field checked



THIS MAP COMPLIES WITH NATIONAL MAP ACCURACY STANDARDS  
FOR SALE BY U.S. GEOLOGICAL SURVEY, RESTON, VIRGINIA 22092  
A FOLDER DESCRIBING TOPOGRAPHIC MAPS AND SYMBOLS IS AVAILABLE ON REQUEST

Map photoinspected 1977  
No major culture or drainage changes observed

ROAD CLASSIFICATION  
Heavy-duty ——— Light-duty ———  
Medium-duty ——— Unimproved dirt ———  
Interstate Route U.S. Route State Route



AMITY, PA.  
SW 1/4 AMITY 15' QUADRANGLE  
N4000—W8007.5/7.5  
PHOTOINSPECTED 1977  
1954  
PHOTOREVISED 1969  
AMS 4964 II SW—SERIES V831

8/29/83