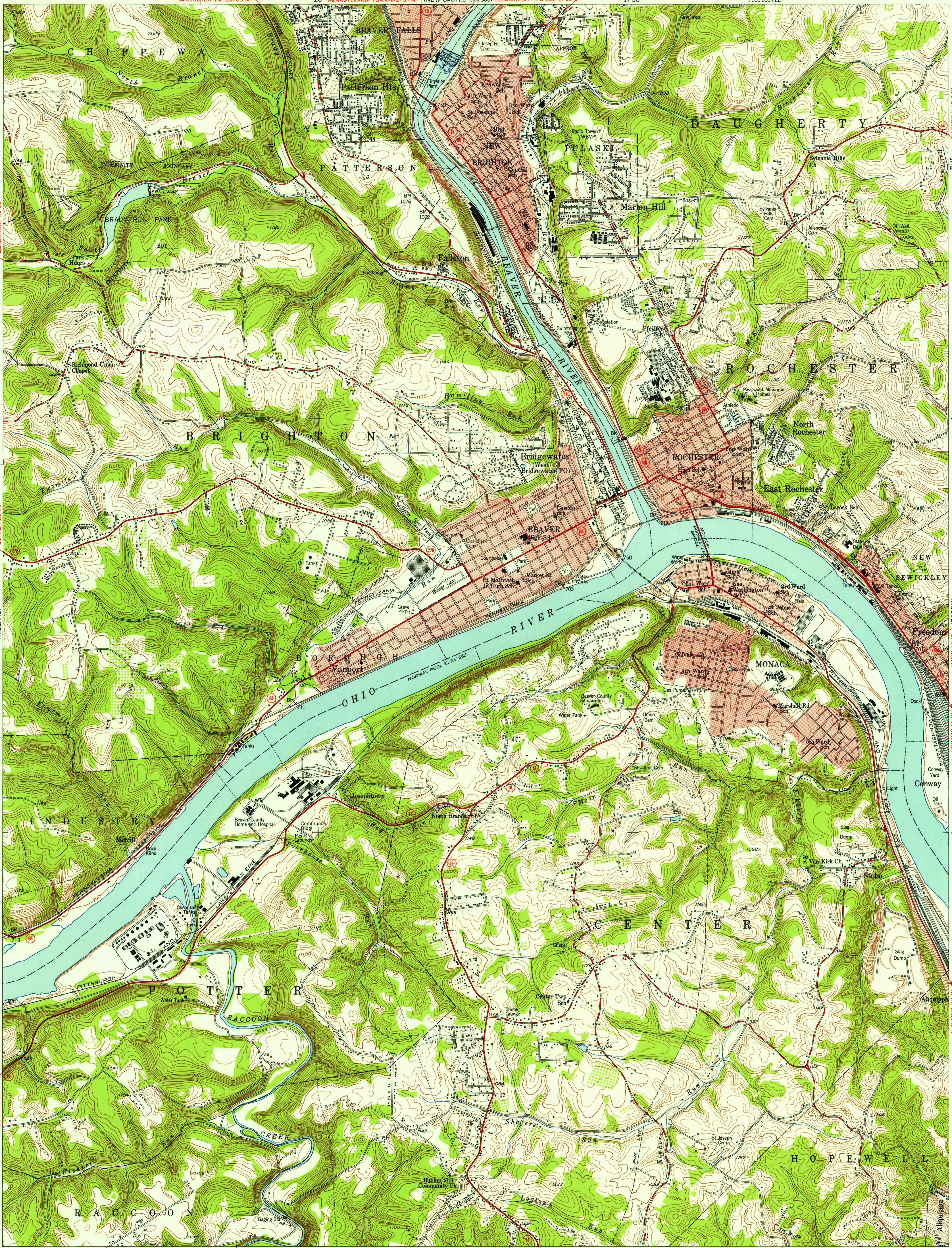


UNITED STATES  
DEPARTMENT OF THE INTERIOR  
GEOLOGICAL SURVEY

BEAVER QUADRANGLE  
PENNSYLVANIA-BEAVER CO.  
7.5 MINUTE SERIES (TOPOGRAPHIC)  
NE/4 BEAVER 15' QUADRANGLE

U.S.G.S.  
FILE COPY  
TOPOGRAPHIC DIVISION

U.S.G.S.  
FILE COPY  
TOPOGRAPHIC DIVISION



Mapped, edited, and published by the Geological Survey  
Control by USGS and USC&GS  
Topography from aerial photographs by multiplex methods,  
Aerial photographs taken 1952. Field check 1953  
Polyconic projection. 1927 North American datum  
10,000-foot grid based on Pennsylvania coordinate system,  
south zone  
Red tint indicates areas in which only  
landmark buildings are shown

4 1/2°  
TRUE NORTH  
MAGNETIC NORTH  
APPROXIMATE MEAN  
DECLINATION, 1953

SCALE 1:24,000  
1 0 1000 2000 3000 4000 5000 6000 7000 FEET  
1 5 0 5 10 KILOMETER  
CONTOUR INTERVAL 20 FEET  
DATUM IS MEAN SEA LEVEL

USGS  
Historical File  
Topographic Division  
PENNSYLVANIA  
QUADRANGLE LOCATION

ROAD CLASSIFICATION  
Heavy-duty ——— Light-duty ———  
Medium-duty ——— Unimproved dirt ———  
U. S. Route ——— State Route ———

BEAVER, PA.  
NE/4 BEAVER 15' QUADRANGLE  
N4037.5 - W8015.7.5

1953

JUL 7 1955

471A