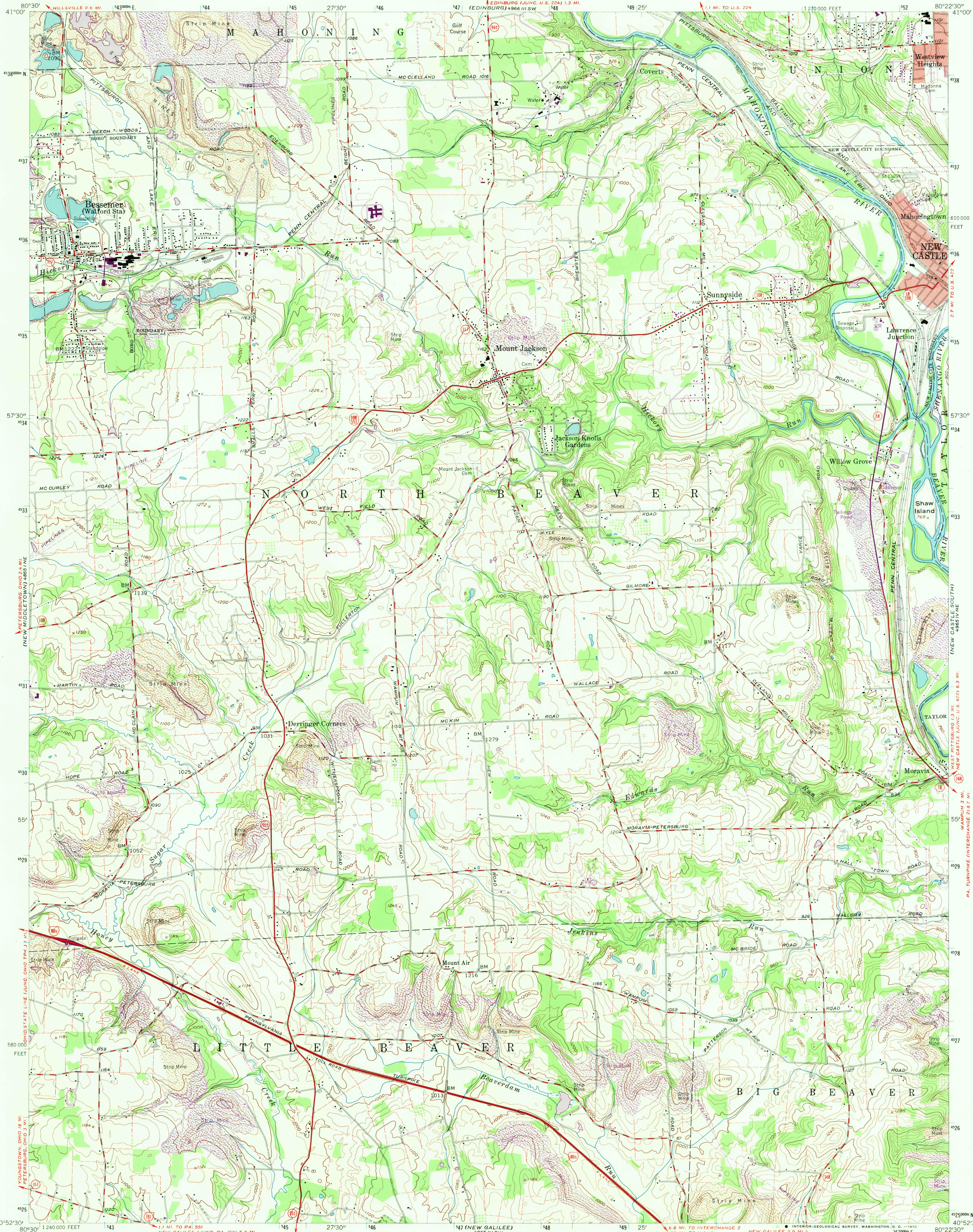


UNITED STATES  
DEPARTMENT OF THE INTERIOR  
GEOLOGICAL SURVEY

STATE OF PENNSYLVANIA  
DEPARTMENT OF INTERNAL AFFAIRS  
TOPOGRAPHIC AND GEOLOGIC SURVEY

BESSEMER QUADRANGLE  
PENNSYLVANIA—LAWRENCE CO.  
7.5 MINUTE SERIES (TOPOGRAPHIC)  
NW 1/4 NEW CASTLE 15' QUADRANGLE



Mapped, edited, and published by the Geological Survey

Control by USGS and USC&GS

Topography from aerial photographs by photogrammetric methods

Aerial photographs taken 1955. Field check 1958

Polyconic projection. 1927 North American datum

10,000-foot grid based on Pennsylvania coordinate system,

south zone

1000-meter Universal Transverse Mercator grid ticks,

zone 17, shown in blue

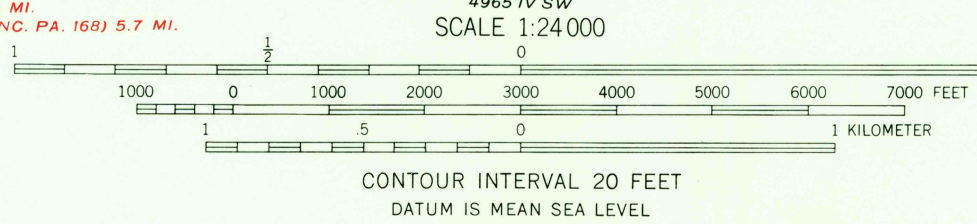
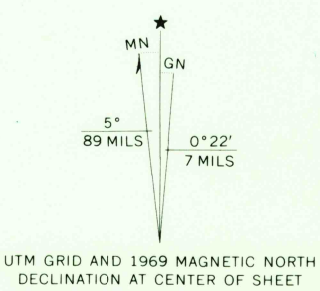
Fine red dashed lines indicate selected fence and field lines

visible on aerial photographs. This information is unchecked

Red tint indicates areas in which only

landmark buildings are shown

Unchecked elevations are shown in brown



USGS  
Historical File  
Topographic Division

U.S.G.S.  
FILE COPY  
TOPOGRAPHIC DIVISION

ROAD CLASSIFICATION  
Heavy-duty ——— Light-duty ———  
Medium-duty ——— Unimproved dirt ———  
Interstate Route ——— State Route ———

THIS MAP COMPLIES WITH NATIONAL MAP ACCURACY STANDARDS  
FOR SALE BY U. S. GEOLOGICAL SURVEY, WASHINGTON, D. C. 20542  
A FOLDER DESCRIBING TOPOGRAPHIC MAPS AND SYMBOLS IS AVAILABLE ON REQUEST

Revisions shown in purple compiled in  
Pennsylvania agencies from aerial photographs taken 1969. This  
information not field checked

BESSEMER, PA.  
NW 1/4 NEW CASTLE 15' QUADRANGLE  
N 4052.5—W 8022.5/7.5

1958  
PHOTOREVISED 1969  
AMS 4965 IV NW—SERIES 7831

3275  
DEC 1 1970