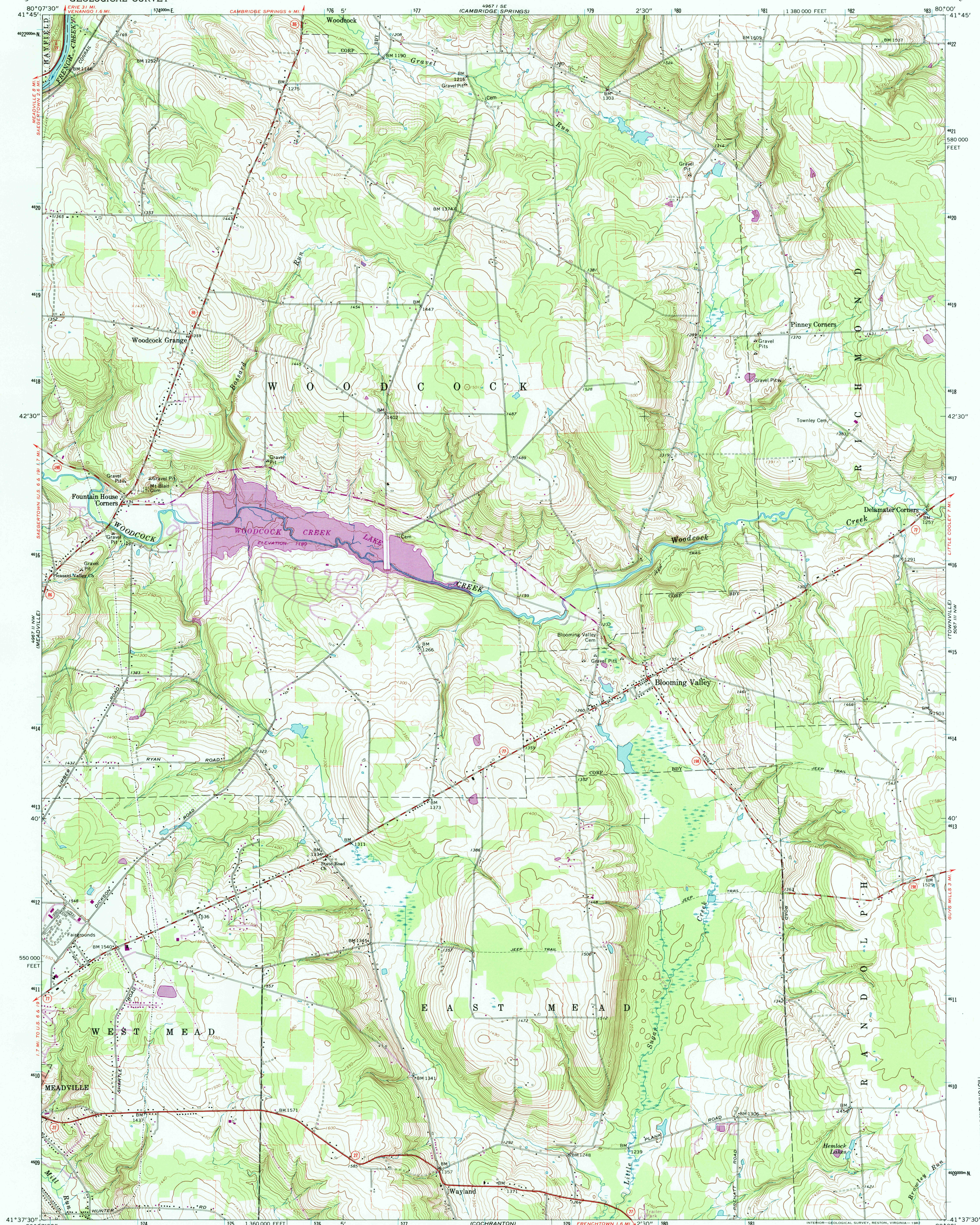
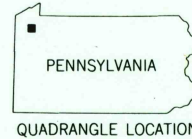
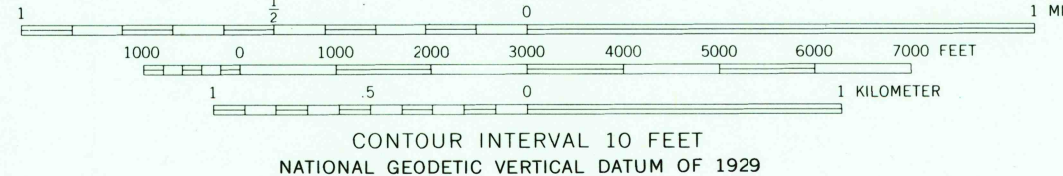
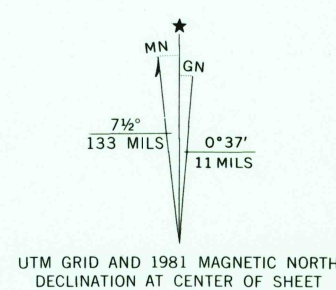


UNITED STATES
DEPARTMENT OF THE INTERIOR
GEOLOGICAL SURVEY

BLOOMING VALLEY QUADRANGLE
PENNSYLVANIA—CRAWFORD CO.
7.5 MINUTE SERIES (TOPOGRAPHIC)



Mapped, edited, and published by the Geological Survey
Control by USGS and NOS/NOAA
Topography by photogrammetric methods from aerial
photographs taken 1964. Field checked 1967
Polyconic projection. 10,000-foot grid ticks based on Pennsylvania
coordinate system, north zone. 1000-meter Universal Transverse
Mercator grid ticks, zone 17, shown in blue. 1927 North
American Datum. To place on the predicted North American
Datum 1983 move the projection lines 2 meters south and 18
meters west as shown by dashed corner ticks
Fine red dashed lines indicate selected fence and field lines where
generally visible on aerial photographs. This information is unchecked
Red tint indicates areas in which only landmark buildings are shown
Revisions shown in purple and woodland compiled in cooperation with
Commonwealth of Pennsylvania agencies from aerial photographs
taken 1977 and other sources. This information not field checked
Map edited 1981



ROAD CLASSIFICATION
Primary highway, all weather, hard surface
Secondary highway, all weather, hard surface
Light-duty road, all weather, improved surface
Unimproved road, fair or dry weather
U.S. Route
State Route

BLOOMING VALLEY, PA.

N4137.5-W8000/7.5

1967
PHOTOREVISED 1981
DMA 4967 II NE-SERIES V831

THIS MAP COMPLIES WITH NATIONAL MAP ACCURACY STANDARDS
FOR SALE BY U.S. GEOLOGICAL SURVEY, RESTON, VIRGINIA 22092
A FOLDER DESCRIBING TOPOGRAPHIC MAPS AND SYMBOLS IS AVAILABLE ON REQUEST

RECEIVED
MAY 31 1993
USGS MND
HISTORICAL MAP ARCHIVES

