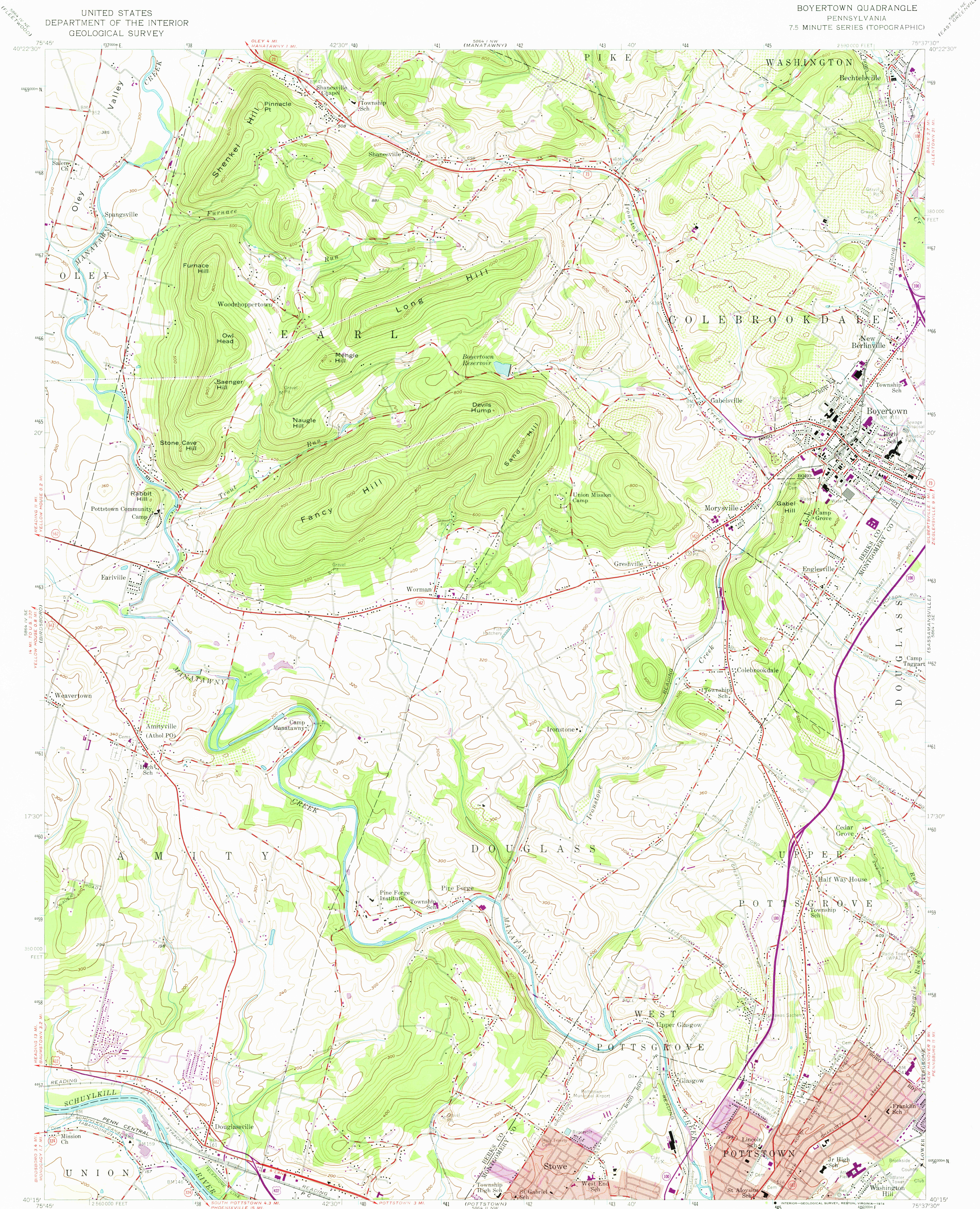


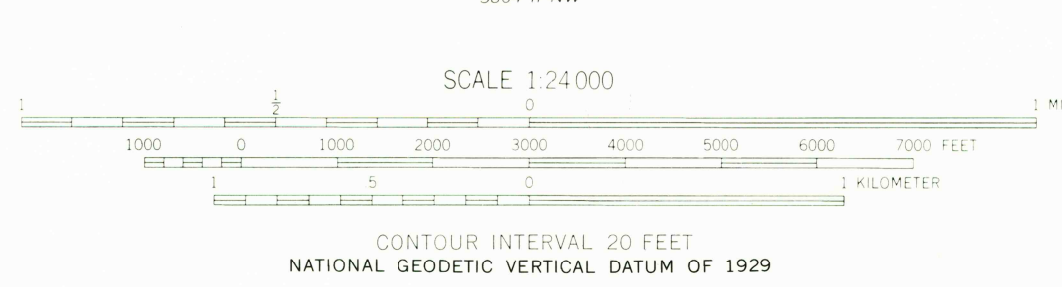
UNITED STATES
DEPARTMENT OF THE INTERIOR
GEOLOGICAL SURVEY

BOYERTOWN QUADRANGLE
PENNSYLVANIA
7.5 MINUTE SERIES (TOPOGRAPHIC)



Mapped by the Army Map Service
Edited and published by the Geological Survey
Control by USGS, USCGS, and USCE
Topography from aerial photographs by photogrammetric methods. Field check 1943
Culture revised by the Geological Survey 1957
Polyconic projection. 1927 North American datum
10,000-foot grid based on Pennsylvania coordinate system,
south zone
1000-meter Universal Transverse Mercator grid ticks,
zone 18, shown in blue
Red tint indicates areas in which only
landmark buildings are shown
Purple tint indicates extension of urban areas

Revisions shown in purple compiled in cooperation with
State of Pennsylvania agencies from aerial photographs
taken 1968. This information not field checked
Purple tint indicates extension of urban areas



ROAD CLASSIFICATION
Heavy-duty ——— Light-duty ———
Medium-duty ——— Unimproved dirt ———
U.S. Route ——— State Route ———
OCT 0 7 1974
BOYERTOWN, PA.
N4015-W7537.5/7.5
1957
PHOTOREVISED 1968
AMS 5864 I SW-SERIES V851