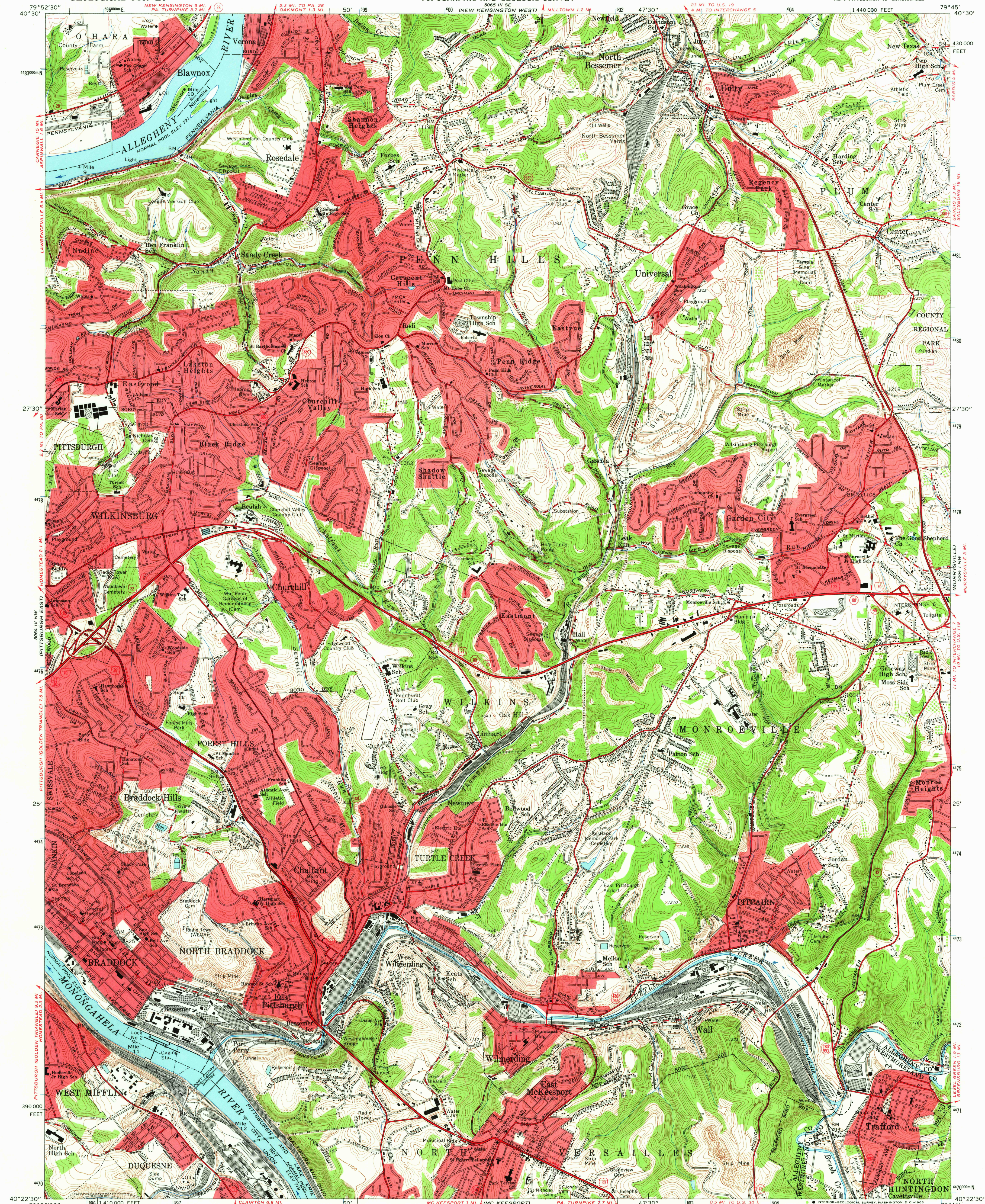


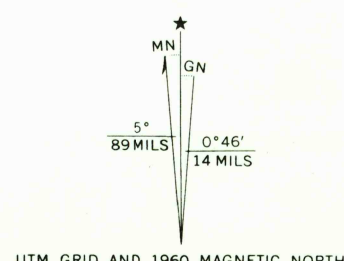
UNITED STATES  
DEPARTMENT OF THE INTERIOR  
GEOLOGICAL SURVEY

STATE OF PENNSYLVANIA  
DEPARTMENT OF INTERNAL AFFAIRS  
TOPOGRAPHIC AND GEOLOGIC SURVEY

BRADDOCK QUADRANGLE  
PENNSYLVANIA  
7.5 MINUTE SERIES (TOPOGRAPHIC)  
NE/4 PITTSBURGH 15' QUADRANGLE



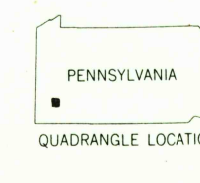
Mapped, edited, and published by the Geological Survey  
Control by USGS, USACGS, and the City of Pittsburgh  
Topography from aerial photographs by photogrammetric methods  
Aerial photographs taken 1952. Revised by photogrammetric methods  
from aerial photographs taken 1959. Field check 1960  
Polyconic projection, 1927 North American datum  
10,000-foot grid based on Pennsylvania coordinate system, south zone  
1000-meter Universal Transverse Mercator grid ticks,  
zone 17, shown in blue  
Fine red dashed lines indicate selected fence and field lines where  
generally visible on aerial photographs. This information is unchecked  
Red tint indicates areas in which only landmark buildings are shown



SCALE 1:24,000  
1000 0 1000 2000 3000 4000 5000 6000 7000 FEET  
1 KILOMETER  
CONTOUR INTERVAL 20 FEET  
DATUM IS MEAN SEA LEVEL

THIS MAP COMPLIES WITH NATIONAL MAP ACCURACY STANDARDS  
FOR SALE BY U.S. GEOLOGICAL SURVEY, WASHINGTON, D.C. 20242  
A FOLDER DESCRIBING TOPOGRAPHIC MAPS AND SYMBOLS IS AVAILABLE ON REQUEST

USGS  
Historical File  
Topographic Division



ROAD CLASSIFICATION  
Heavy duty ——— Light duty ———  
Medium duty ——— Unimproved dirt ———  
Interstate Route U.S. Route State Route

U.S.G.S. BRADDOCK, PA.  
NE/4 PITTSBURGH 15' QUADRANGLE  
N4022.5—W7945.7.5  
TOPOGRAPHIC DIVISION  
1960  
AMS 5064 IV NE-SERIES V831