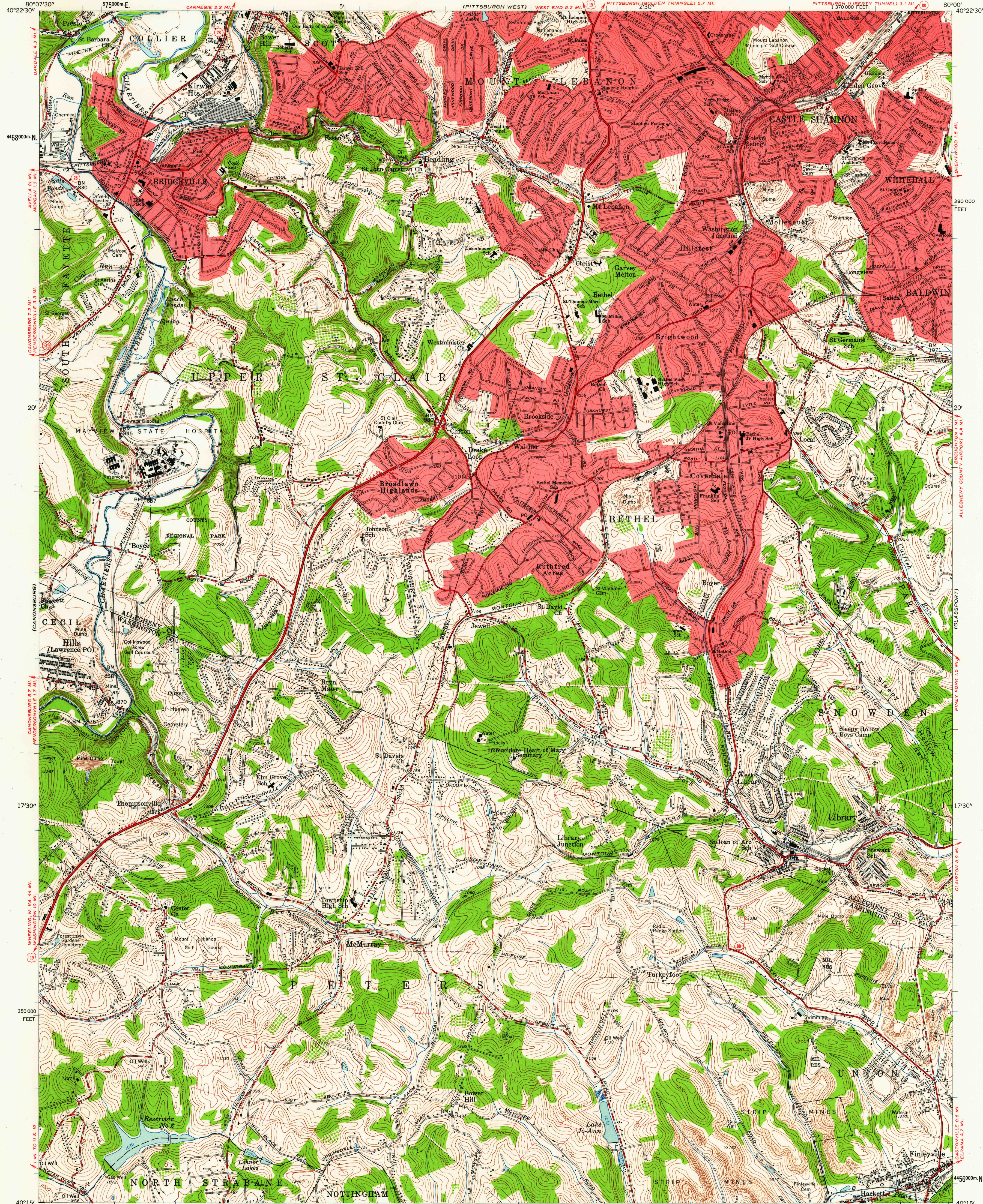


UNITED STATES  
DEPARTMENT OF THE INTERIOR  
GEOLOGICAL SURVEY

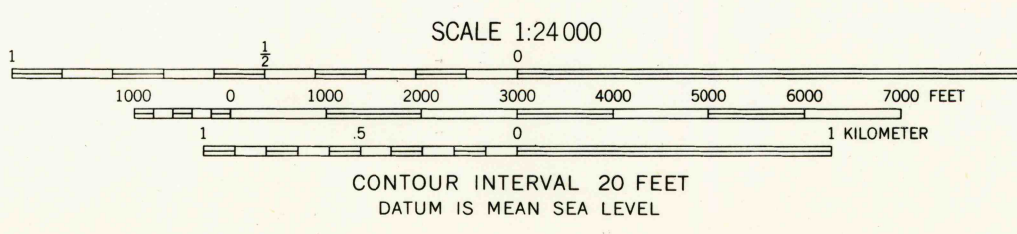
STATE OF PENNSYLVANIA  
DEPARTMENT OF INTERNAL AFFAIRS  
TOPOGRAPHIC AND GEOLOGIC SURVEY

BRIDGEVILLE QUADRANGLE  
PENNSYLVANIA  
7.5 MINUTE SERIES (TOPOGRAPHIC)  
SE 1/4 CARNEGIE 15' QUADRANGLE

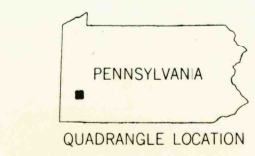


Maped, edited, and published by the Geological Survey  
Control by USGS, USC&GS, and the City of Pittsburgh  
Topography from aerial photographs by photogrammetric methods  
Aerial photographs taken 1952. Revised by photogrammetric methods  
from aerial photographs taken 1959. Field check 1960  
Polyconic projection. 1927 North American datum  
10,000-foot grid based on Pennsylvania coordinate system, south zone  
1000-meter Universal Transverse Mercator grid ticks,  
zone 17, shown in blue  
Fine red dashed lines indicate selected fence and field lines where  
generally visible on aerial photographs. This information is unchecked  
Red tint indicates areas in which only landmark buildings are shown

APPROXIMATE MEAN  
DECLINATION, 1960



USGS  
Historical File  
Topographic Division



ROAD CLASSIFICATION  
Heavy-duty ——— Light-duty ———  
Medium-duty ——— Unimproved dirt ———  
U.S. Route ——— State Route ———  
BRIDGEVILLE, PA.  
SE 1/4 CARNEGIE 15' QUADRANGLE  
N4015-W8000/7.5  
1960

JUN 27 1961