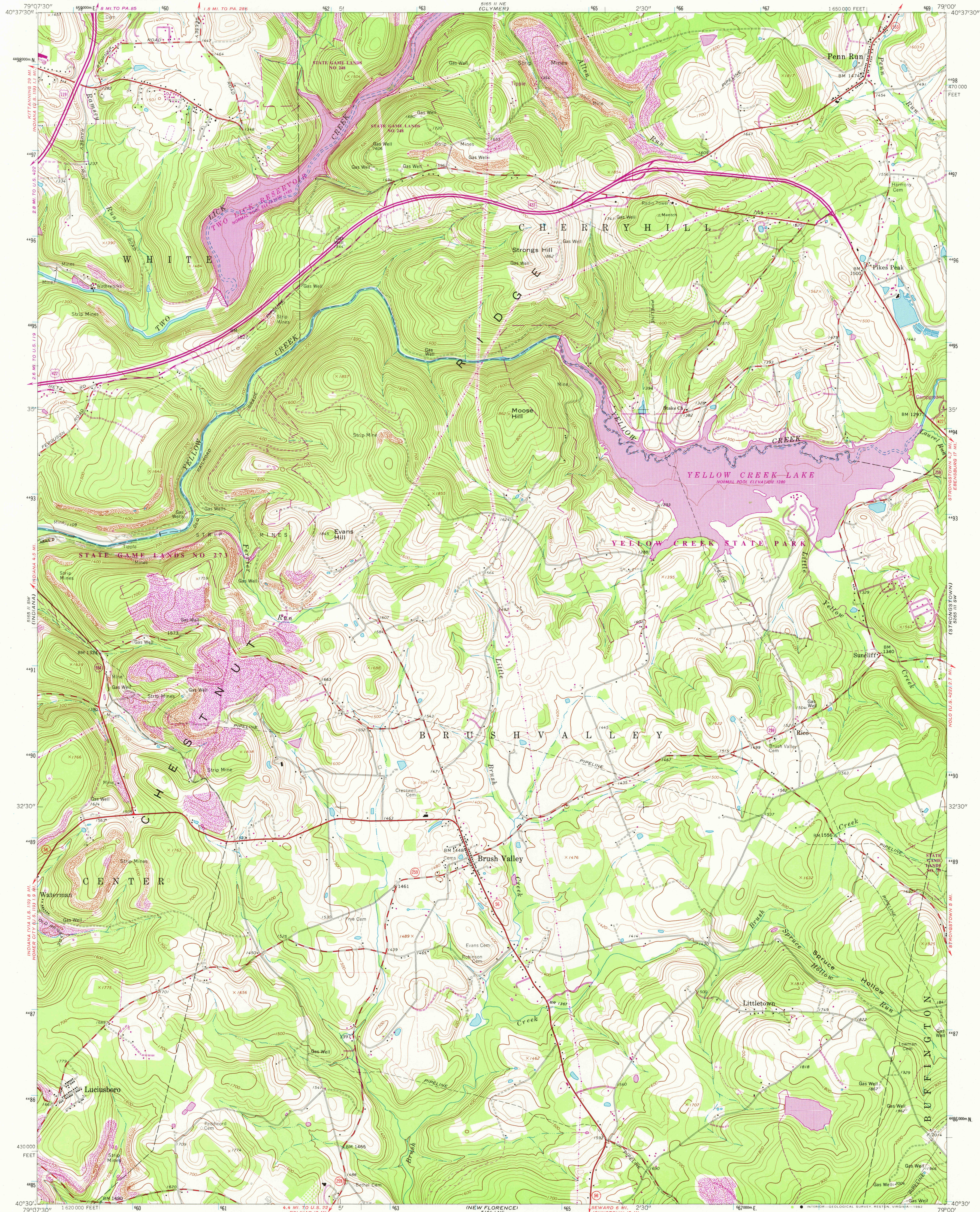
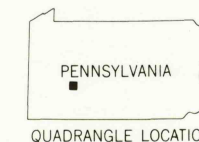
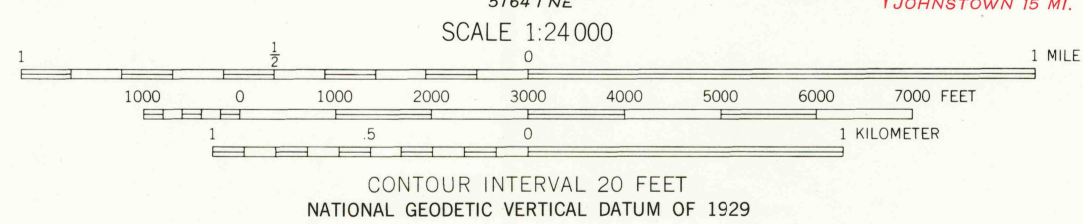
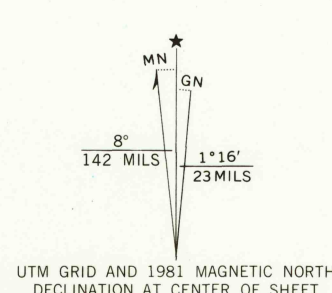


UNITED STATES
DEPARTMENT OF THE INTERIOR
GEOLOGICAL SURVEY

BRUSH VALLEY QUADRANGLE
PENNSYLVANIA-INDIANA CO.
7.5 MINUTE SERIES (TOPOGRAPHIC)



Mapped, edited, and published by the Geological Survey
Control by USGS and NOS/NOAA
Topography by photogrammetric methods from aerial
photographs taken 1961. Field checked 1963
Polyconic projection. 10,000-foot grid ticks based on Pennsylvania
coordinate system, south zone. 1000-meter Universal Transverse
Mercator grid ticks, zone 17, shown in blue. 1927 North American
Datum. To place on predicted North American Datum 1983 move the
projection lines 4 meters south and 21 meters west as shown by
dashed corner ticks
Fine red dashed lines indicate selected fence and field lines where
generally visible on aerial photographs. This information is unchecked
There may be private inholdings within the boundaries of
the National or State reservations shown on this map
Revisions shown in purple and woodland compiled in cooperation with
Commonwealth of Pennsylvania agencies from aerial photographs taken 1977
and other sources. This information not field checked. Map edited 1981



ROAD CLASSIFICATION	
Heavy-duty	Light-duty
Medium-duty	Unimproved dirt
U.S. Route	State Route

BRUSH VALLEY, PA.

N4030—W7900/7.5

1963
PHOTOREVISED 1981
DMA 5165 II SE-SERIES V831

RETURN TO:
USGS AND HISTORICAL MAP ARCHIVES

SEP 16 1982

3700