

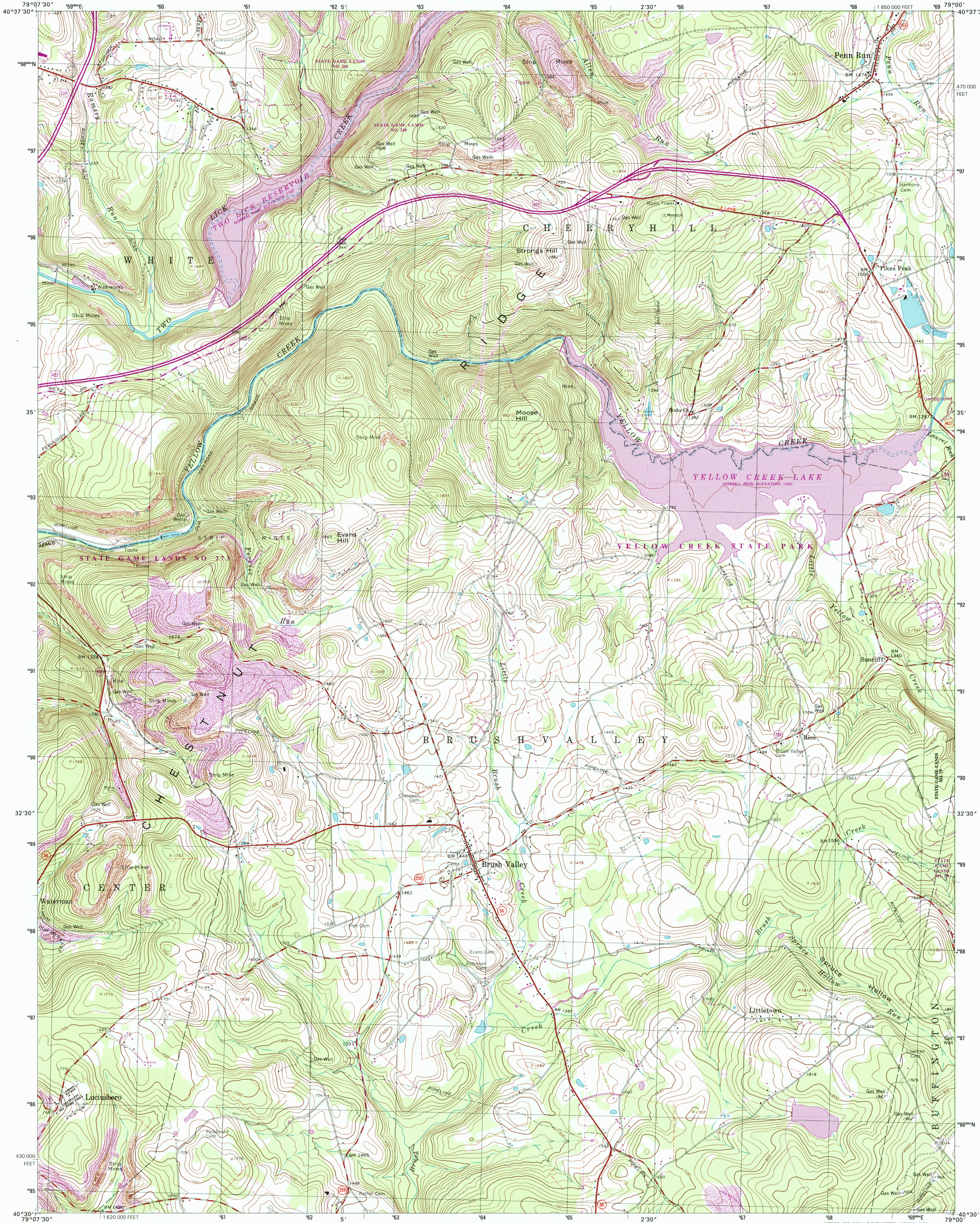


U.S. DEPARTMENT OF THE INTERIOR
U.S. GEOLOGICAL SURVEY



COMMONWEALTH OF PENNSYLVANIA
DEPARTMENT OF CONSERVATION AND NATURAL RESOURCES
BUREAU OF TOPOGRAPHIC AND GEOLOGIC SURVEY

BRUSH VALLEY QUADRANGLE
PENNSYLVANIA-INDIANA CO.
7.5-MINUTE SERIES (TOPOGRAPHIC)

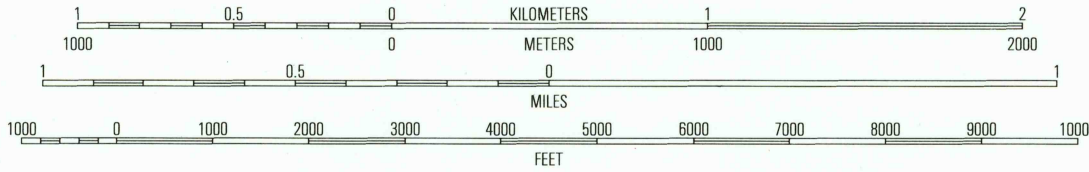
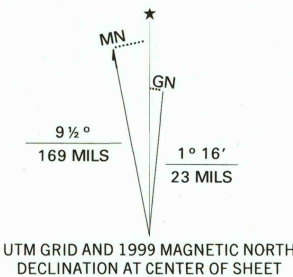


RECEIVED

JUN 30 2000

USGS WILD
HISTORICAL MAP ARCHIVES

Produced by the United States Geological Survey
in cooperation with Pennsylvania Department of Conservation
and Natural Resources, Bureau of Topographic and Geologic Survey
Topography compiled 1961. Planimetry derived from imagery taken 1977 and other sources. Photomaps using imagery dated 1998;
no major culture or drainage changes observed. Survey control
current as of 1963. Boundaries revised 1999
North American Datum of 1927 (NAD 27). Projection and
10 000-foot ticks: Pennsylvania coordinate system, south zone
(Lambert conformal conic)
1000-meter Universal Transverse Mercator grid, zone 17
North American Datum of 1983 (NAD 83) is shown by dashed
corner ticks. The values of the shift between NAD 27 and NAD 83
for 7.5-minute intersections are obtainable from National Geodetic
Survey NADCON software
There may be private inholdings within the boundaries of
the National or State reservations shown on this map
Information shown in purple may not meet USGS content standards
and may conflict with previously mapped contours

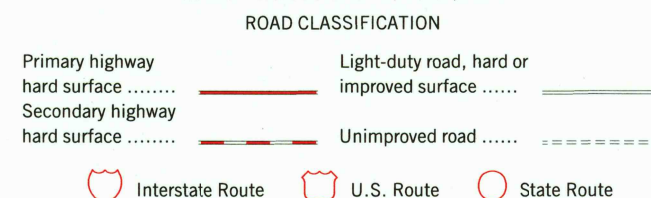


CONTOUR INTERVAL 20 FEET
NATIONAL GEODETIC VERTICAL DATUM OF 1929
TO CONVERT FROM FEET TO METERS, MULTIPLY BY 0.3048

THIS MAP COMPLIES WITH NATIONAL MAP ACCURACY STANDARDS
FOR SALE BY U.S. GEOLOGICAL SURVEY, P.O. BOX 25286, DENVER, COLORADO 80225
A FOLDER DESCRIBING TOPOGRAPHIC MAPS AND SYMBOLS IS AVAILABLE ON REQUEST



QUADRANGLE LOCATION



1	2	3	1 East
4	5	6	2 Clymer
7	8	9	3 Commodore
			4 Indiana
			5 Strongtown
			6 Bolivar
			7 New Florence
			8 Vintondale

ADJOINING 7.5' QUADRANGLE NAMES

BRUSH VALLEY, PA
1998

NIMA 5165 II SE-SERIES V831



1
9 780607 923605