

58° 15' SE  
(RICHLAND VALLEY)

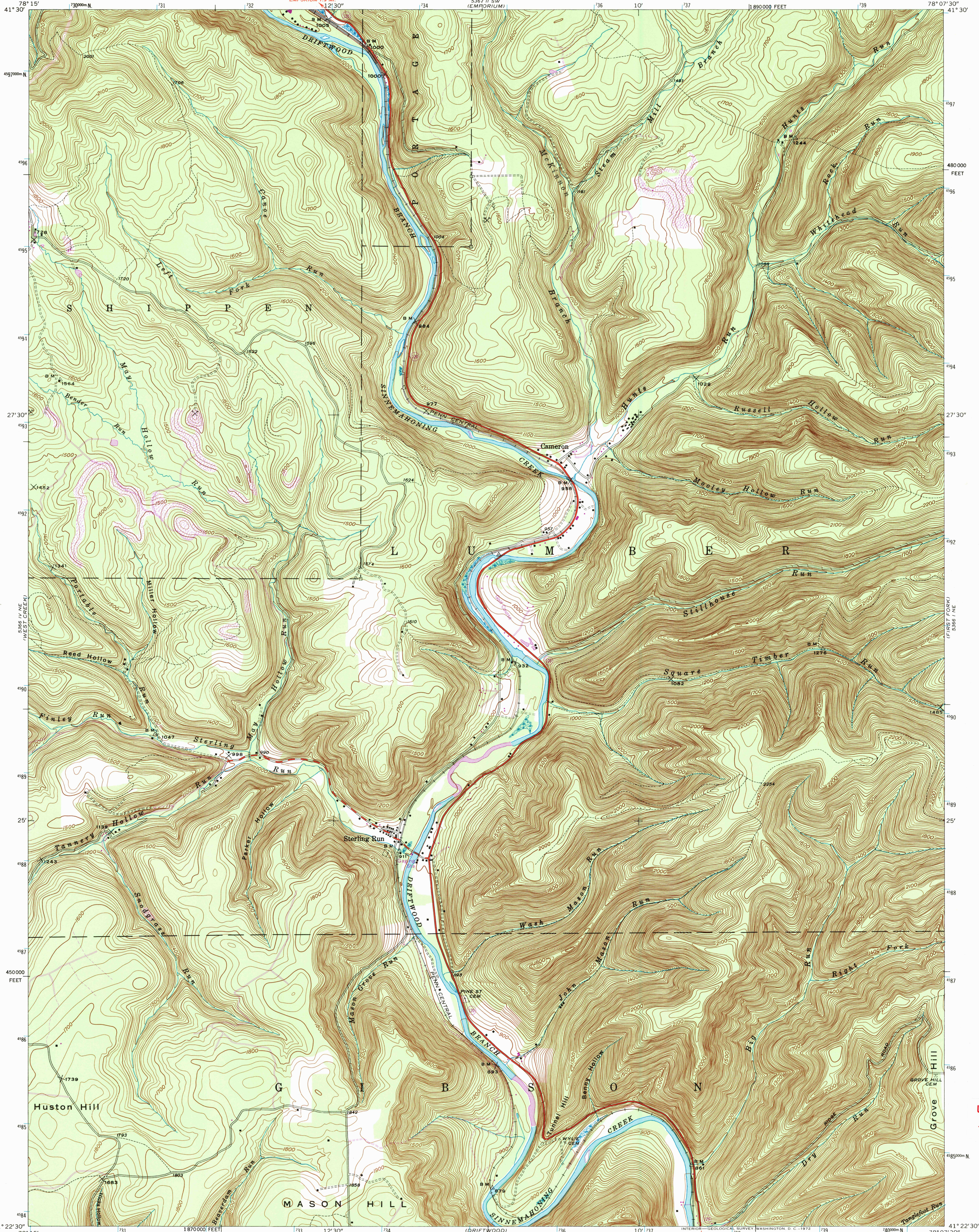


U.S. DEPARTMENT OF THE INTERIOR  
U.S. GEOLOGICAL SURVEY

COMMONWEALTH OF PENNSYLVANIA  
DEPARTMENT OF ENVIRONMENTAL RESOURCES  
TOPOGRAPHIC AND GEOLOGIC SURVEY

CAMERON QUADRANGLE  
PENNSYLVANIA—CAMERON CO.  
7.5 MINUTE SERIES (TOPOGRAPHIC)  
NW 4 DRIFTWOOD 15' QUADRANGLE

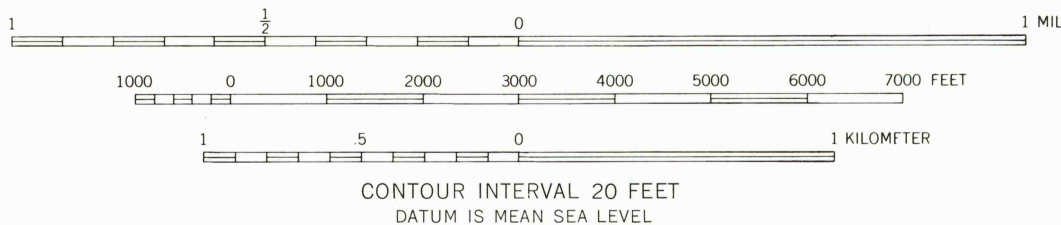
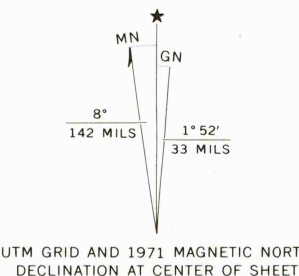
58° 15' SE  
(WHARTON)



102° 15' NW  
(58° 15' SE)

Mapped by the Geological Survey  
1945

ROAD CLASSIFICATION  
Heavy-duty ——— Light-duty ———  
Medium-duty ——— Unimproved dirt ———  
U. S. Route



SEP 19 2006

USGS LIBRARY - RESTON  
3 1818 00509657 1

CAMERON, PA.  
NW 4 DRIFTWOOD 15' QUADRANGLE  
N4122.5-W7807.5/7.5

1945  
PHOTOREVISED 1971  
AMS 5366 1 NW—SERIES B831

THIS MAP COMPLIES WITH NATIONAL MAP ACCURACY STANDARDS  
FOR SALE BY U. S. GEOLOGICAL SURVEY, WASHINGTON, D. C. 20242  
A FOLDER DESCRIBING TOPOGRAPHIC MAPS AND SYMBOLS IS AVAILABLE ON REQUEST

Revisions shown in purple compiled in cooperation with State of Pennsylvania agencies from aerial photographs taken 1971. This information not field checked

USGS Library  
Reston, VA.  
Topo Archive

