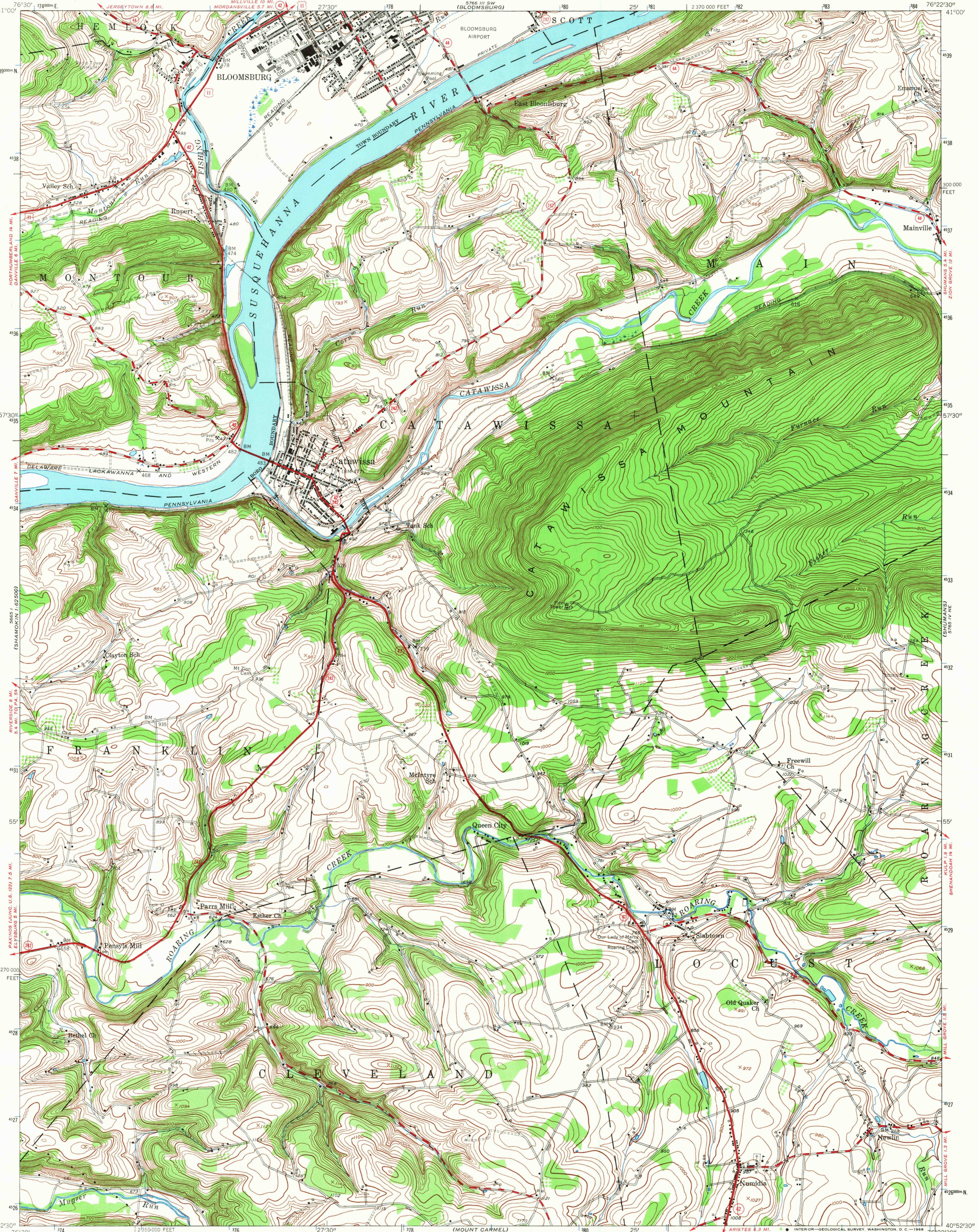
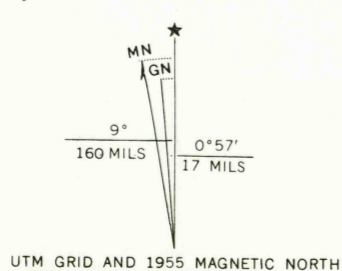


UNITED STATES  
DEPARTMENT OF THE INTERIOR  
GEOLOGICAL SURVEY

CATAWISSA QUADRANGLE  
PENNSYLVANIA—COLUMBIA CO.  
7.5 MINUTE SERIES (TOPOGRAPHIC)  
NW/4 CATAWISSA 15' QUADRANGLE



Mapped, edited, and published by the Geological Survey  
Control by USGS and USC&GS  
Topography from aerial photographs by multiplex methods  
Aerial photographs taken 1942. Field check 1944  
Culture revised 1955  
Polyconic projection, 1927 North American datum  
10,000-foot grid based on Pennsylvania coordinate system,  
north zone  
Unchecked elevations are shown in brown  
1000-meter Universal Transverse Mercator grid ticks,  
zone 18, shown in blue



SCALE 1:24,000  
1000 0 1000 2000 3000 4000 5000 6000 7000 FEET  
1 KILOMETER  
CONTOUR INTERVAL 20 FEET  
DATUM IS MEAN SEA LEVEL

USGS  
Historical File  
Topographic Division



ROAD CLASSIFICATION  
Heavy-duty ——— Light-duty ———  
Medium-duty ——— Unimproved dirt ———  
U. S. Route ——— State Route ———

U.S.G.S.  
FILE COPY  
TOPOGRAPHIC DIVISION

CATAWISSA, PA.  
NW/4 CATAWISSA 15' QUADRANGLE  
N4052.5-W7622.5/7.5  
1955  
AMS 5765 IV NW-SERIES V831

THIS MAP COMPLIES WITH NATIONAL MAP ACCURACY STANDARDS  
FOR SALE BY U. S. GEOLOGICAL SURVEY, WASHINGTON, D. C. 20242  
A FOLDER DESCRIBING TOPOGRAPHIC MAPS AND SYMBOLS IS AVAILABLE ON REQUEST

2755  
JUL 12 1968