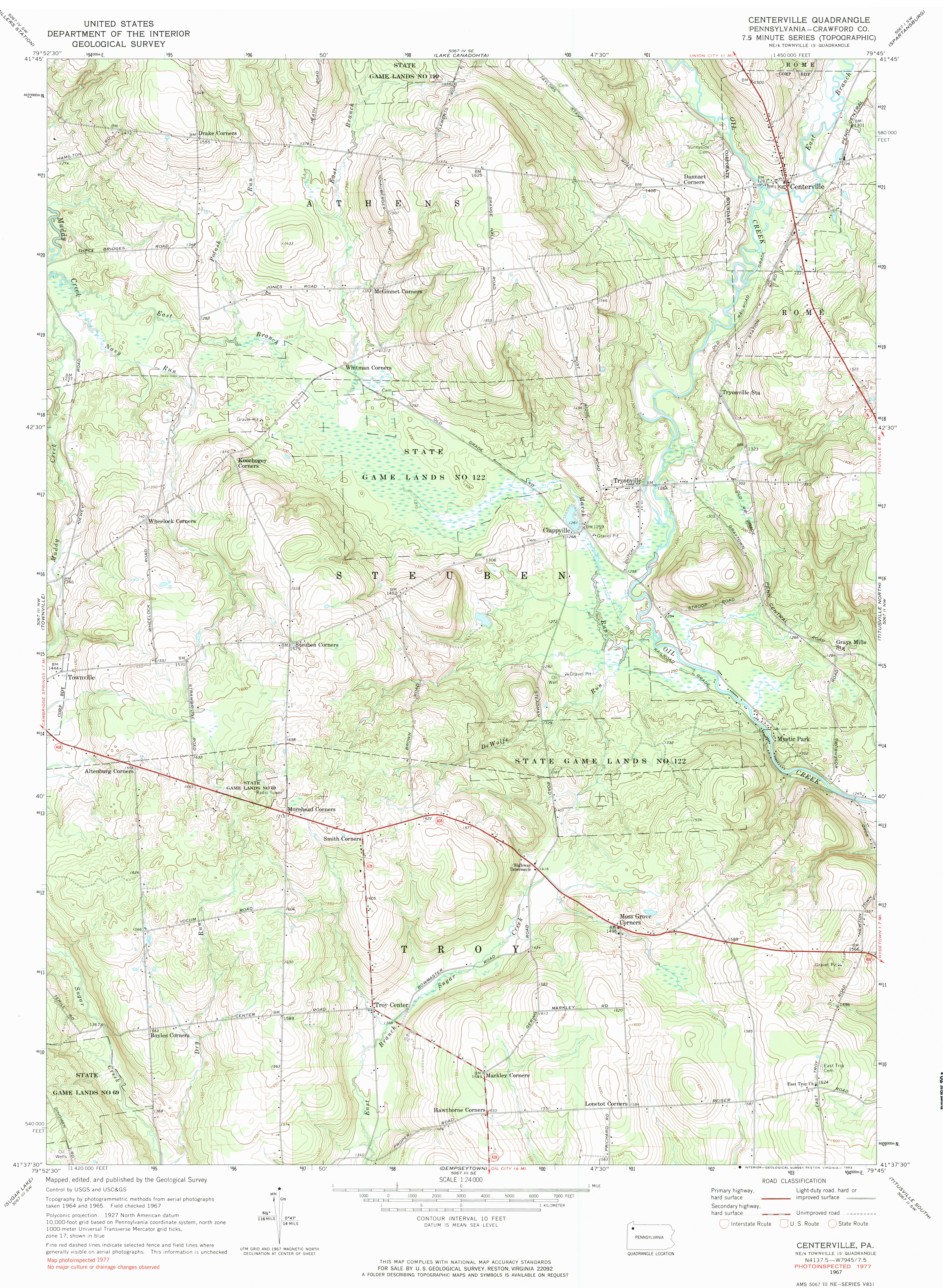


UNITED STATES
DEPARTMENT OF THE INTERIOR
GEOLOGICAL SURVEY

CENTERVILLE QUADRANGLE
PENNSYLVANIA—CRAWFORD CO.
7.5 MINUTE SERIES (TOPOGRAPHIC)
NE/4 TOWNVILLE 15 QUADRANGLE



Mapped, edited, and published by the Geological Survey

Control by USGS and USC&GS

Topography by photogrammetric methods from aerial photographs

taken 1964 and 1965. Field checked 1967

Polyconic projection. 1927 North American datum

10,000-foot grid based on Pennsylvania coordinate system, north zone

1000-meter Universal Transverse Mercator grid ticks,

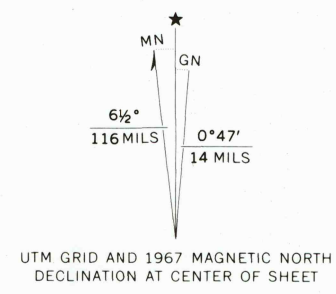
zone 17, shown in blue

Fine red dashed lines indicate selected fence and field lines where

generally visible on aerial photographs. This information is unchecked

Map photoinspected 1977

No major culture or drainage changes observed



SCALE 1:24,000

CONTOUR INTERVAL 10 FEET

DATUM IS MEAN SEA LEVEL

THIS MAP COMPLIES WITH NATIONAL MAP ACCURACY STANDARDS

FOR SALE BY U. S. GEOLOGICAL SURVEY, RESTON, VIRGINIA 22092

A FOLDER DESCRIBING TOPOGRAPHIC MAPS AND SYMBOLS IS AVAILABLE ON REQUEST



ROAD CLASSIFICATION

Primary highway, hard surface

Light-duty road, hard or improved surface

Secondary highway, hard surface

Unimproved road

Interstate Route

U. S. Route

State Route

CENTERVILLE, PA.

NE/4 TOWNVILLE 15 QUADRANGLE

N4137.5—W7945/7.5

PHOTOINSPECTED 1977

1967

AMS 5067 III NE—SERIES V831

RETURN TO:
1965 NMD HISTORICAL MAP ARCHIVES