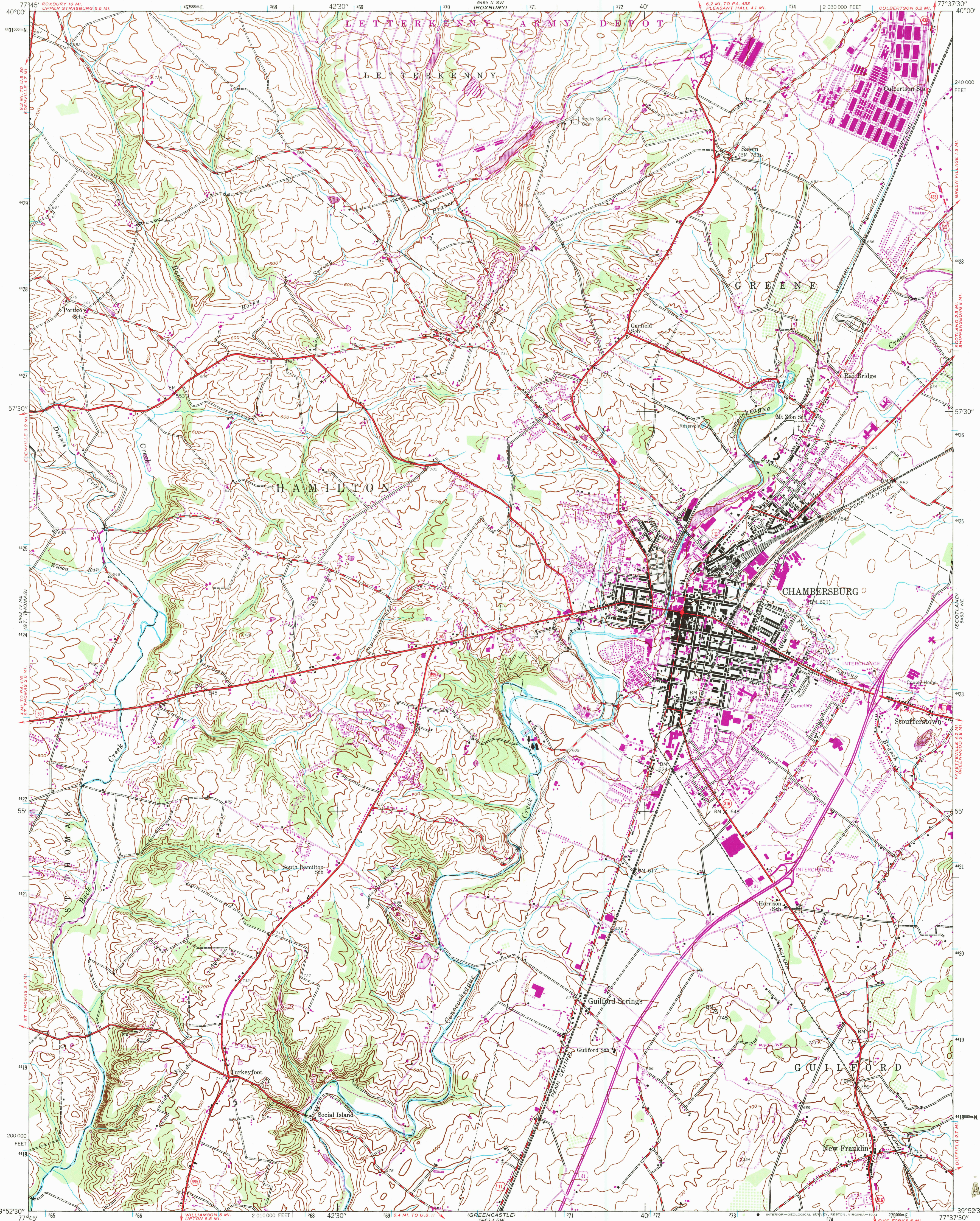


UNITED STATES  
DEPARTMENT OF THE INTERIOR  
GEOLOGICAL SURVEY

CHAMBERSBURG QUADRANGLE  
PENNSYLVANIA—FRANKLIN CO.  
7.5 MINUTE SERIES (TOPOGRAPHIC)  
NW/4 CHAMBERSBURG 15' QUADRANGLE



Mapped by the Army Map Service  
Published for civil use by the Geological Survey

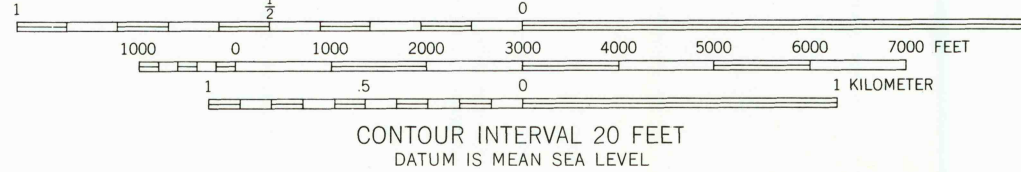
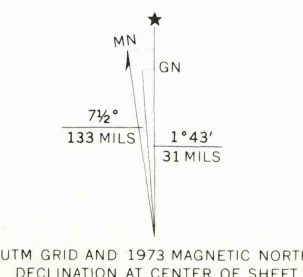
Control by USGS, USC&GS, and USFS

Topography from aerial photographs by photogrammetric methods

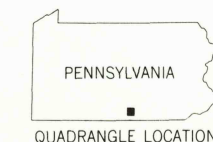
Aerial photographs taken 1943. Field check 1944

Polyconic projection. 1927 North American datum  
10,000-foot grid based on Pennsylvania coordinate system, south zone  
1000-meter Universal Transverse Mercator grid ticks,  
zone 18, shown in blue

Revisions shown in purple compiled by the Geological Survey in  
cooperation with State of Pennsylvania agencies, from aerial  
photographs taken 1968 and 1973. This information not field checked



CONTOUR INTERVAL 20 FEET  
DATUM IS MEAN SEA LEVEL



ROAD CLASSIFICATION  
Heavy-duty ——— Light-duty ———  
Medium-duty ——— Unimproved dirt ———  
Interstate Route U.S. Route State Route

CHAMBERSBURG, PA.  
NW/4 CHAMBERSBURG 15' QUADRANGLE  
N3952.5—W7737.5/7.5  
1944

PHOTOREVISED 1968 AND 1973  
AMS 5463 1 NW—SERIES V851

THIS MAP COMPLIES WITH NATIONAL MAP ACCURACY STANDARDS  
FOR SALE BY U.S. GEOLOGICAL SURVEY, RESTON, VIRGINIA 22092  
A FOLDER DESCRIBING TOPOGRAPHIC MAPS AND SYMBOLS IS AVAILABLE ON REQUEST

RETURN TO:  
USGS AND HISTORICAL MAP ARCHIVES

AUG 20 1993