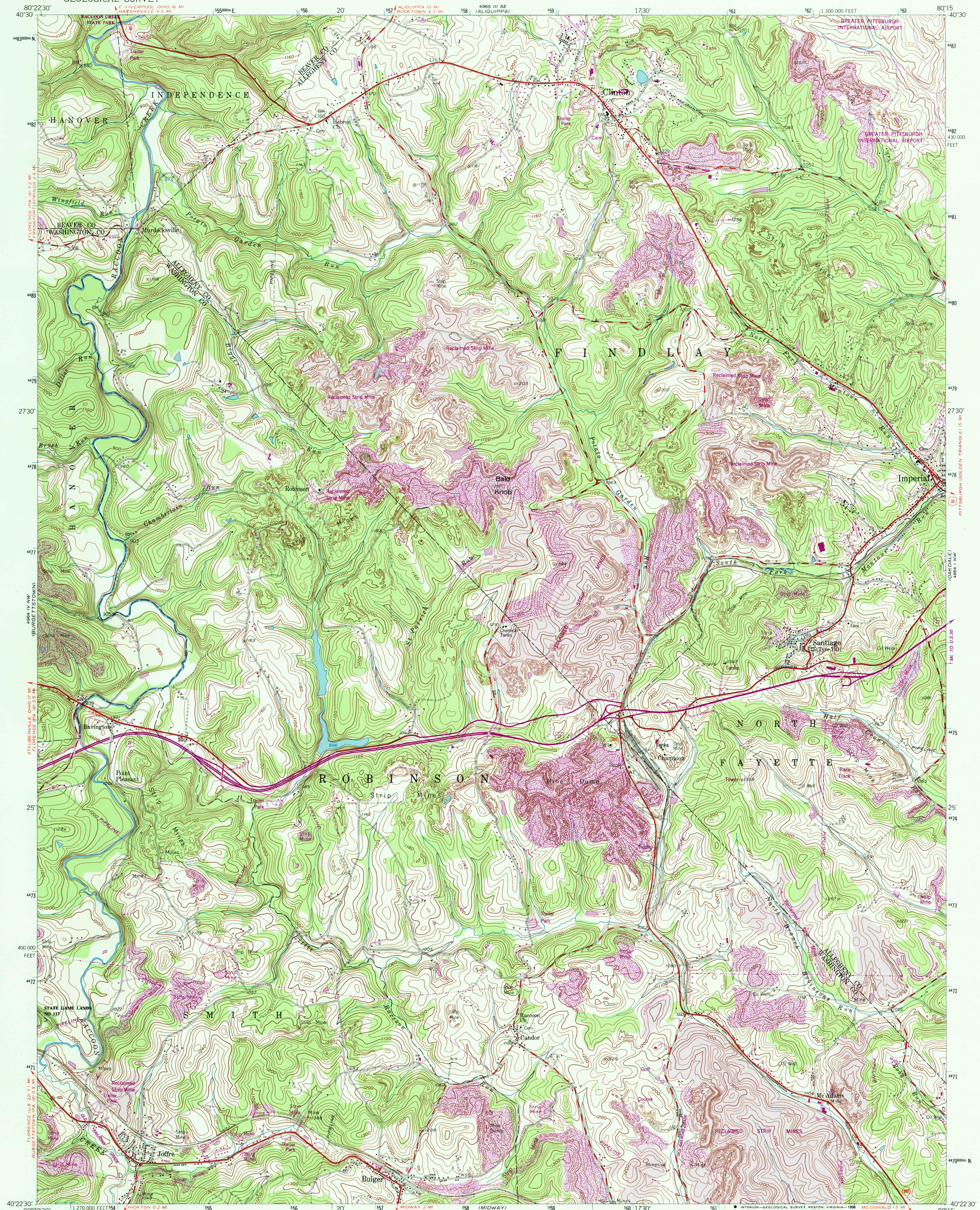
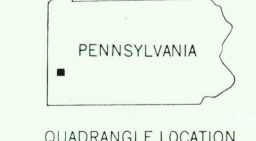
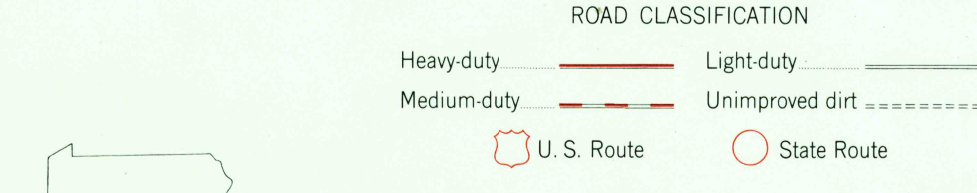
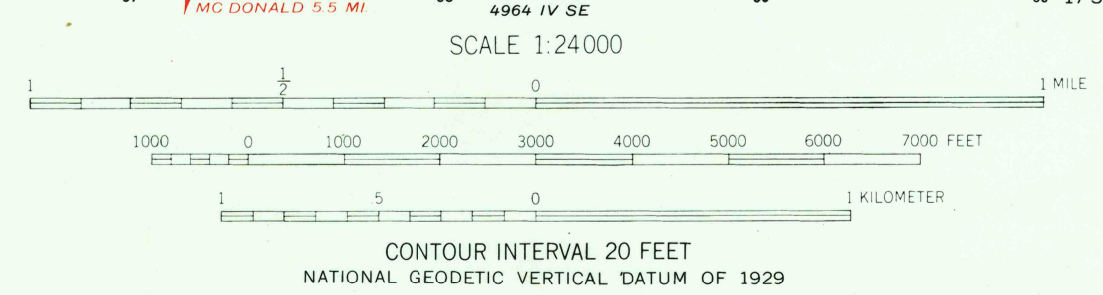
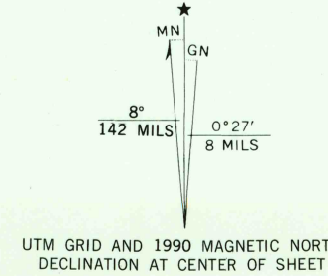


UNITED STATES
DEPARTMENT OF THE INTERIOR
GEOLOGICAL SURVEY

CLINTON QUADRANGLE
PENNSYLVANIA
7.5 MINUTE SERIES (TOPOGRAPHIC)



Mapped, edited, and published by the Geological Survey
Control by USGS and USC&GS
Topography from aerial photographs by multiplex methods
Aerial photographs taken 1952. Field check 1954
Polyconic projection, 1927 North American datum
10,000-foot grid based on Pennsylvania coordinate system,
south zone
1000-meter Universal Transverse Mercator grid ticks, zone 17,
shown in blue
To place on the predicted North American Datum 1983
move the projection lines 4 meters south and
17 meters west as shown by dashed corner ticks
There may be private inholdings within the boundaries of
the National or State reservations shown on this map
Contours in strip mine areas may not accurately
represent present topography



CLINTON, PA.
40080-03-TF-024
1954
PHOTOREVISED 1990
DMA 4964 IV NE-SERIES V831

Revisions shown in purple and woodland compiled in cooperation with Commonwealth of Pennsylvania agencies from aerial photographs taken 1988 and other sources. This information not field checked. Map edited 1990
Light purple tint indicates reclaimed strip mine areas

USGS MND HISTORICAL
MAR 15 1991
REC'D FILE COPY