

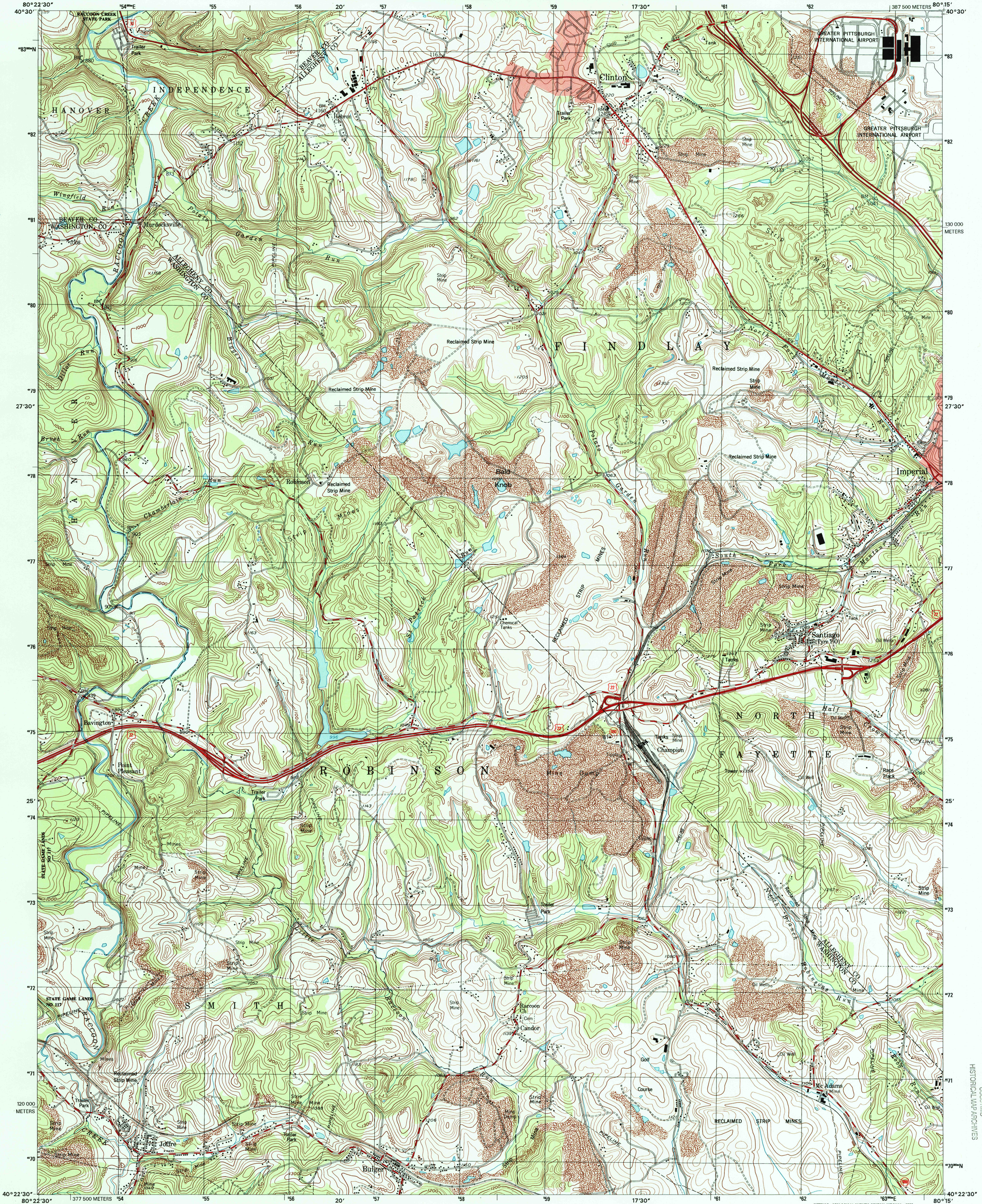


U.S. DEPARTMENT OF THE INTERIOR  
U.S. GEOLOGICAL SURVEY

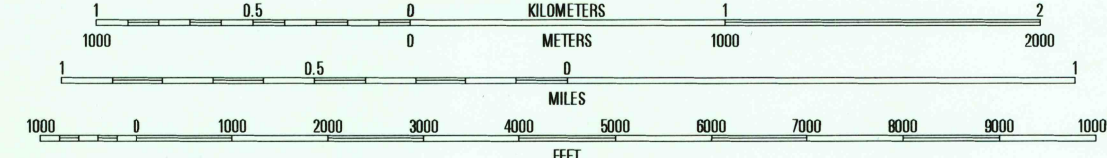
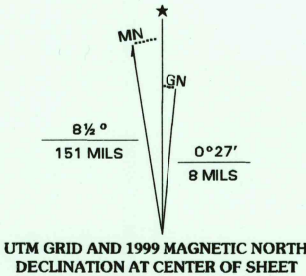


COMMONWEALTH OF PENNSYLVANIA  
DEPARTMENT OF CONSERVATION AND NATURAL RESOURCES  
BUREAU OF TOPOGRAPHIC AND GEOLOGIC SURVEY

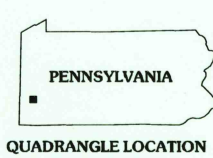
CLINTON QUADRANGLE  
PENNSYLVANIA  
7.5-MINUTE SERIES (TOPOGRAPHIC)



Produced by the United States Geological Survey  
in cooperation with Pennsylvania Department of  
Conservation and Natural Resources, Bureau of  
Topographic and Geologic Survey  
Topography compiled 1993. Planimetry derived from imagery  
taken 1996. Survey control current as of 1994.  
North American Datum of 1983 (NAD 83). Projection and  
1 000-meter grid: Universal Transverse Mercator, zone 17  
2 500-meter ticks: Pennsylvania Coordinate System of 1983  
(south zone)  
North American Datum of 1927 (NAD 27) is shown by dashed  
corner ticks. The values of the shift between NAD 83 and  
NAD 27 for 7.5-minute intersections are obtainable from  
National Geodetic Survey NADCON software  
There may be private inholdings within the boundaries of the  
National or State reservations shown on this map  
Landmark buildings verified 1954



SCALE 1:24 000  
CONTOUR INTERVAL 20 FEET  
NATIONAL GEODETIC VERTICAL DATUM OF 1929  
TO CONVERT FROM FEET TO METERS, MULTIPLY BY 0.3048



ROAD CLASSIFICATION  
Primary highway  
hard surface .....  
Secondary highway  
hard surface .....  
Light-duty road, hard or  
improved surface .....  
Unimproved road .....  
Interstate Route  
U.S. Route  
State Route

1	2	3	1 Hockessin
4	5	2 Allentown	2 Allentown
6	7	3 Ambridge	3 Ambridge
		4 Burgettstown	4 Burgettstown
		5 Oakdale	5 Oakdale
		6 Avella	6 Avella
		7 Midway	7 Midway
		8 Canonsburg	8 Canonsburg

CLINTON, PA  
1998

NIMA 4964 IV NE-SERIES V831



THIS MAP COMPLIES WITH NATIONAL MAP ACCURACY STANDARDS  
FOR SALE BY U.S. GEOLOGICAL SURVEY, P.O. BOX 25286, DENVER, COLORADO 80225  
A FOLDER DESCRIBING TOPOGRAPHIC MAPS AND SYMBOLS IS AVAILABLE ON REQUEST

RECEIVED  
APR 30 2000  
USGS MWD  
HISTORICAL MAP ARCHIVES

