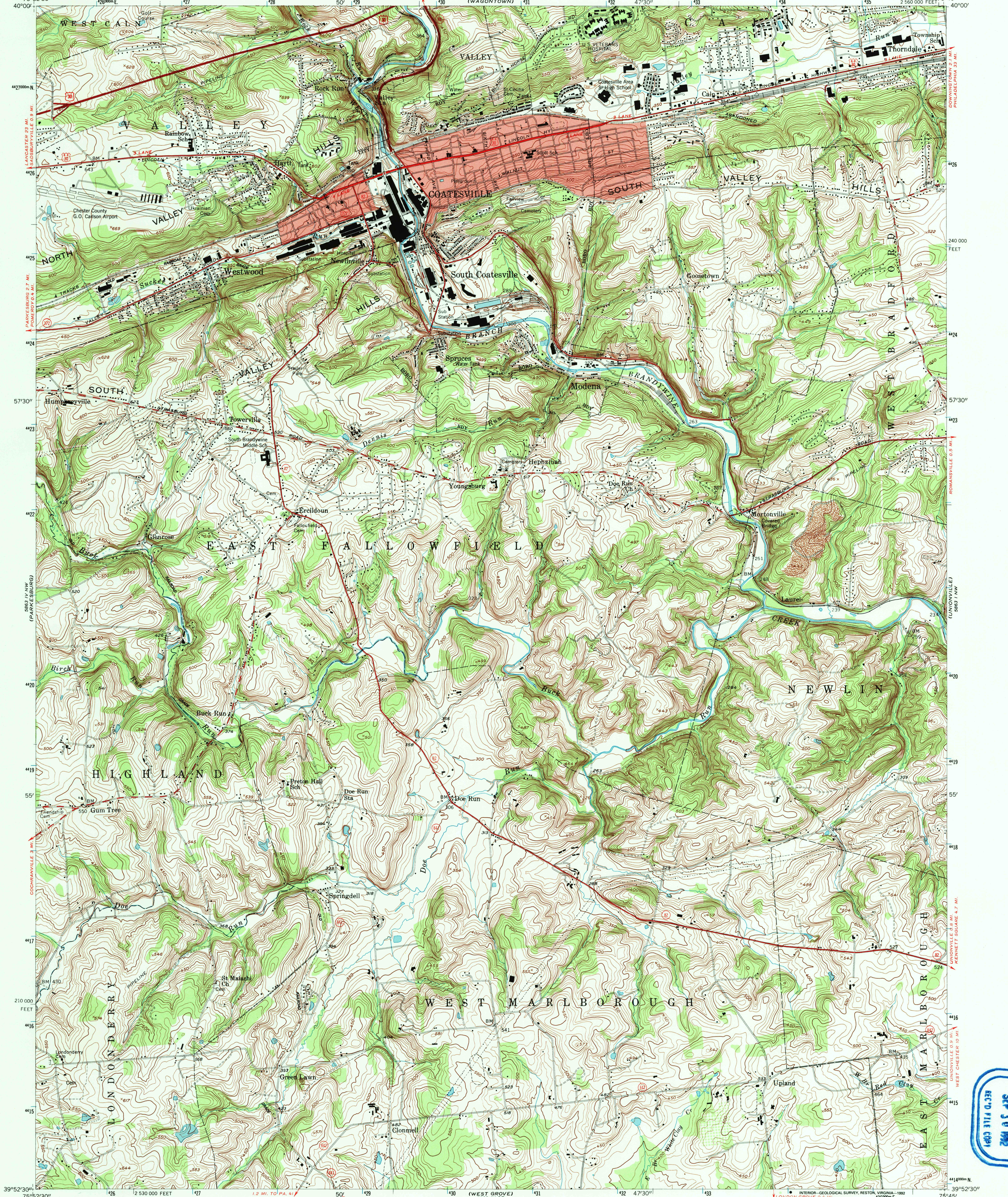
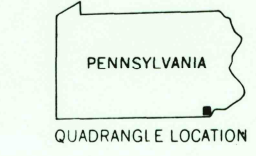
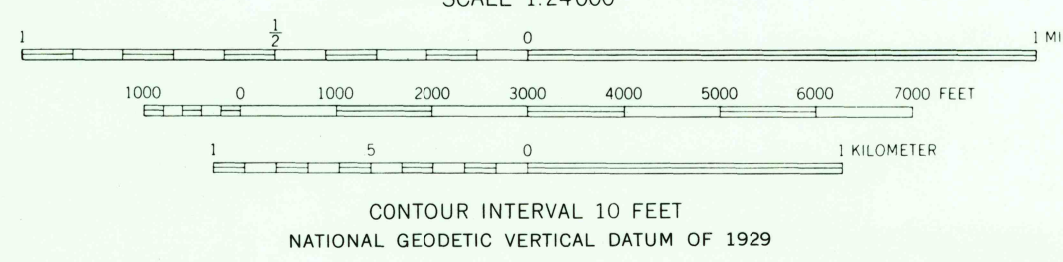
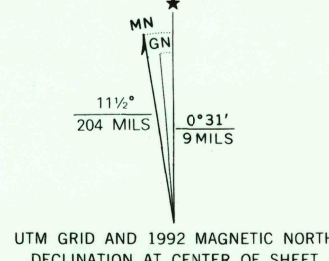


UNITED STATES
DEPARTMENT OF THE INTERIOR
GEOLOGICAL SURVEY

COATESVILLE QUADRANGLE
PENNSYLVANIA—CHESTER CO.
7.5 MINUTE SERIES (TOPOGRAPHIC)



Mapped, edited, and published by the Geological Survey
Control by USGS and USCGS
Topography from aerial photographs by stereophotogrammetric methods. Aerial photographs taken 1950. Field check 1953
Polyconic projection. 10,000-foot grid ticks based on Pennsylvania coordinate system, south zone
1000-meter Universal Transverse Mercator grid ticks, zone 18, shown in blue
1927 North American Datum
The difference between 1927 North American Datum and North American Datum of 1983 (NAD 83) for 7.5-minute intersections is given in USGS Bulletin 1875. The NAD 83 is shown by dashed corner ticks
Red tint indicates areas in which only landmark buildings are shown



ROAD CLASSIFICATION
Heavy-duty ——— Light-duty ———
Medium-duty ——— Unimproved dirt ———
U.S. Route ——— State Route ———

COATESVILLE, PA.
39075-H7-TF-024

1953
REVISED 1992
DMA 5863 IV NE—SERIES V831

THIS MAP COMPLIES WITH NATIONAL MAP ACCURACY STANDARDS
FOR SALE BY U.S. GEOLOGICAL SURVEY
DENVER, COLORADO 80225 OR RESTON, VIRGINIA 22092
A FOLDER DESCRIBING TOPOGRAPHIC MAPS AND SYMBOLS IS AVAILABLE ON REQUEST

Revisions compiled in cooperation with Commonwealth
of Pennsylvania agencies from aerial photographs
taken 1988 and other sources. Contours not
revised. This information not field checked
Map edited 1992

