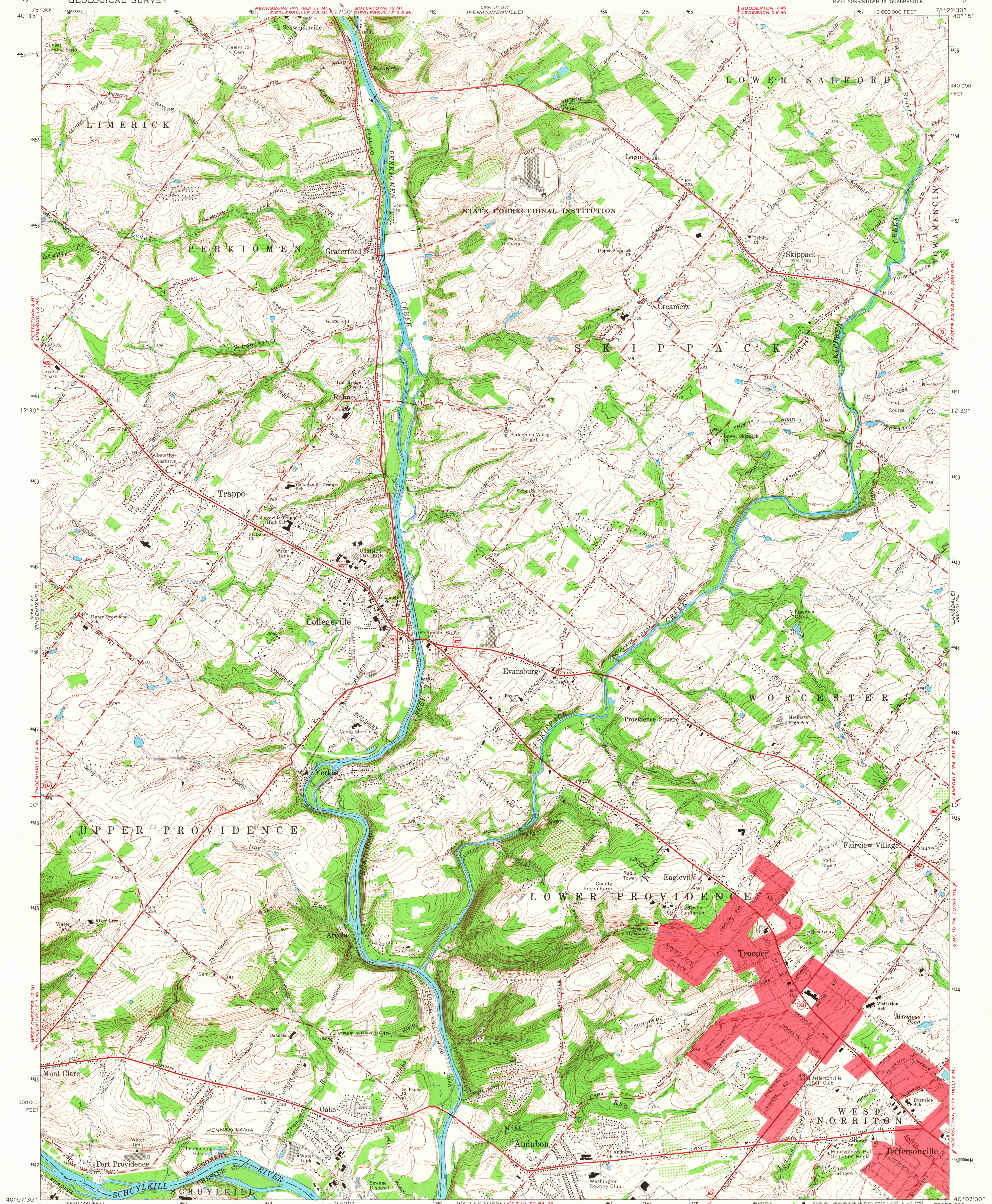


UNITED STATES
DEPARTMENT OF THE INTERIOR
GEOLOGICAL SURVEY

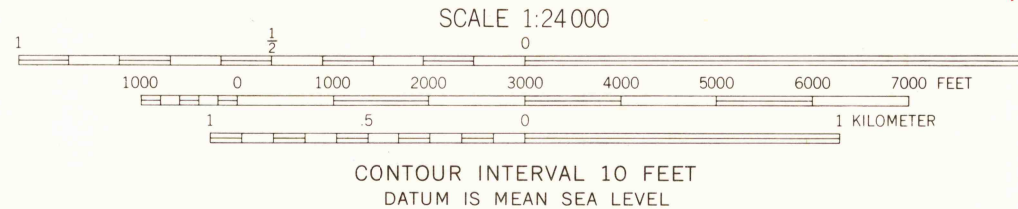
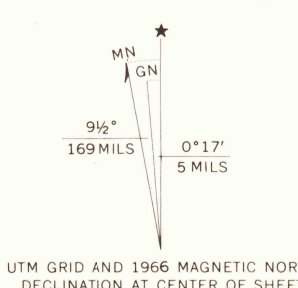
COLLEGEVILLE QUADRANGLE
PENNSYLVANIA
7.5 MINUTE SERIES (TOPOGRAPHIC)

NW/4 NORRISTOWN 15' QUADRANGLE

1966 V.E.
TEL FORD



Mapped, edited, and published by the Geological Survey
in cooperation with Pennsylvania Department
of Internal Affairs, Topographic and Geologic Survey
Control by USGS and USC&GS
Topography by photogrammetric methods from aerial photographs
taken 1950. Field checked 1951. Revised from aerial
photographs taken 1965. Field checked 1966
Polyconic projection. 1927 North American datum
10,000-foot grid based on Pennsylvania coordinate system, south zone
1000-meter Universal Transverse Mercator grid ticks,
zone 18, shown in blue
Fine red dashed lines indicate selected fence and field lines where
generally visible on aerial photographs. This information is unchecked
Red tint indicates areas in which only landmark buildings are shown



USGS
PENNSYLVANIA
FILE COPY
TOPOGRAPHIC DIVISION

ROAD CLASSIFICATION
Heavy-duty ——— Light-duty ———
Medium-duty ——— Unimproved dirt ———
U.S. Route ——— State Route ———

COLLEGEVILLE, PA.
NW/4 NORRISTOWN 15' QUADRANGLE
N4007.5-W7522.5/7.5
1966
AMS 5964 III NW-SERIES V831

JUN 7 1968