

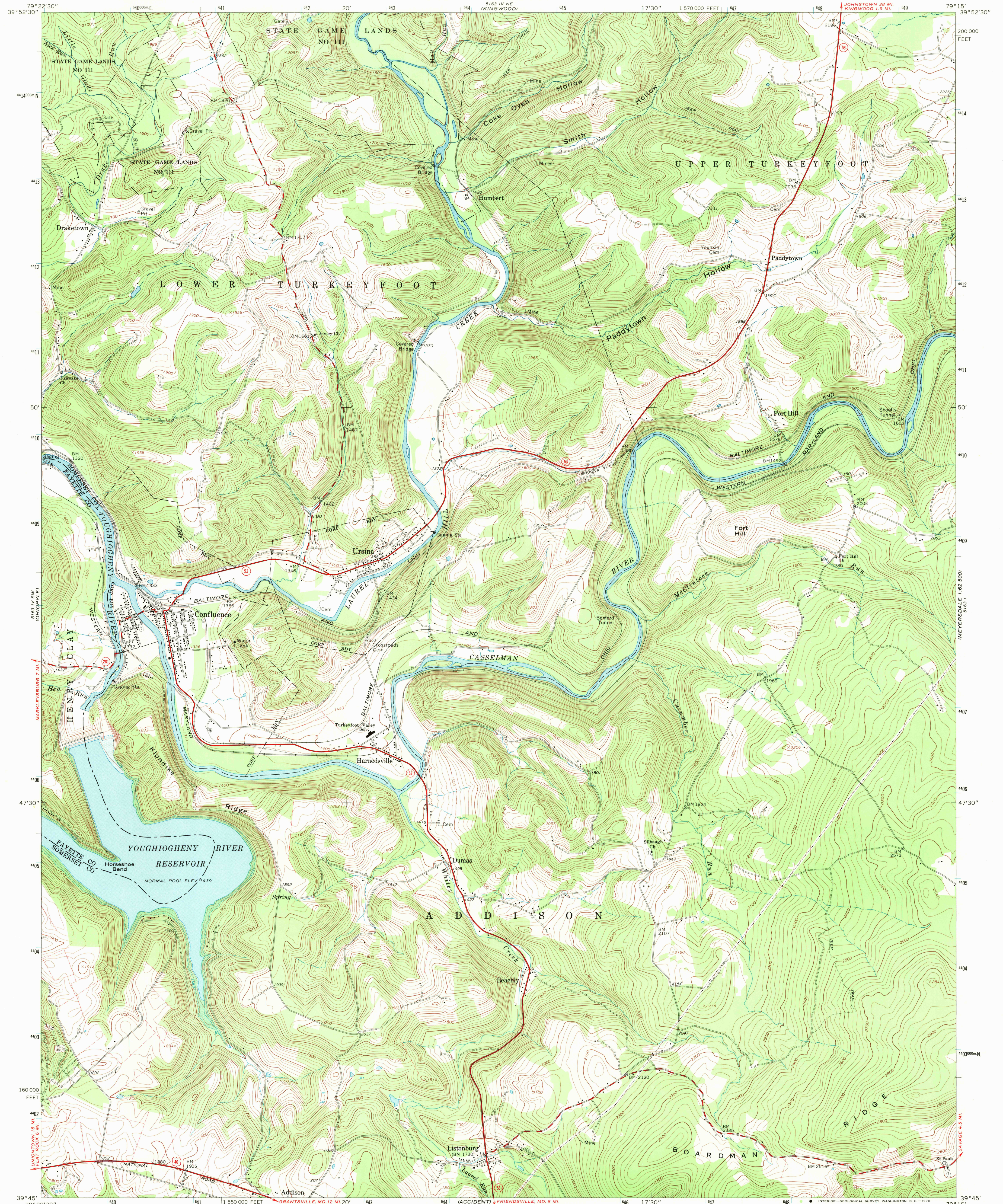
5163 IV SE
(MILL RUN)

UNITED STATES
DEPARTMENT OF THE INTERIOR
GEOLOGICAL SURVEY

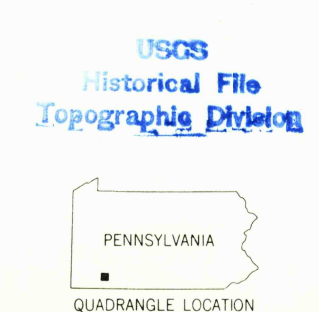
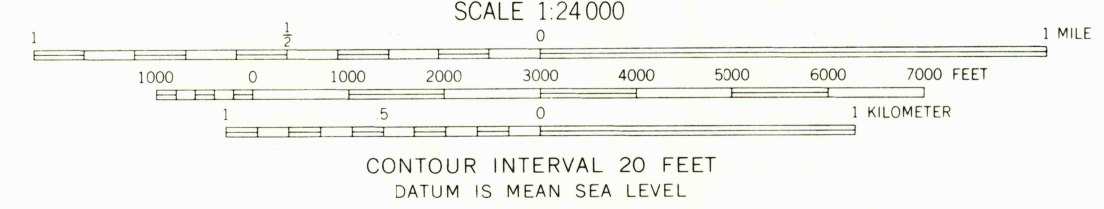
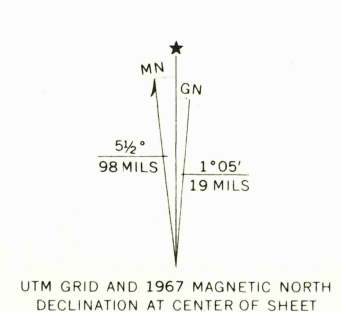
COMMONWEALTH OF PENNSYLVANIA
STATE PLANNING BOARD
TOPOGRAPHIC AND GEOLOGIC SURVEY

CONFLUENCE QUADRANGLE
PENNSYLVANIA
7.5 MINUTE SERIES (TOPOGRAPHIC)

5163 I
(MEYERSDALE 1:62,500)



Mapped, edited, and published by the Geological Survey
Control by USGS, USCGS, and USCE
Topography by photogrammetric methods from aerial
photographs taken 1966. Field checked 1967
Polyconic projection. 1927 North American datum
10,000-foot grid based on Pennsylvania coordinate system, south zone
1000-meter Universal Transverse Mercator grid ticks,
zone 17, shown in blue
Fine red dashed lines indicate selected fence and field lines where
generally visible on aerial photographs. This information is unchecked
Areas covered by dashed light-blue pattern
are subject to controlled inundation



ROAD CLASSIFICATION
Primary highway, all weather, hard surface
Secondary highway, all weather, hard surface
Light-duty road, all weather, improved surface
Unimproved road, fair or dry weather
U. S. Route
State Route

CONFLUENCE, PA.
SE/4 CONFLUENCE 15' QUADRANGLE
N3945—W7915/7.5

1967
AMS 5163 IV SE—SERIES V831

THIS MAP COMPLIES WITH NATIONAL MAP ACCURACY STANDARDS
FOR SALE BY U. S. GEOLOGICAL SURVEY, WASHINGTON, D. C. 20242
A FOLDER DESCRIBING TOPOGRAPHIC MAPS AND SYMBOLS IS AVAILABLE ON REQUEST

3055