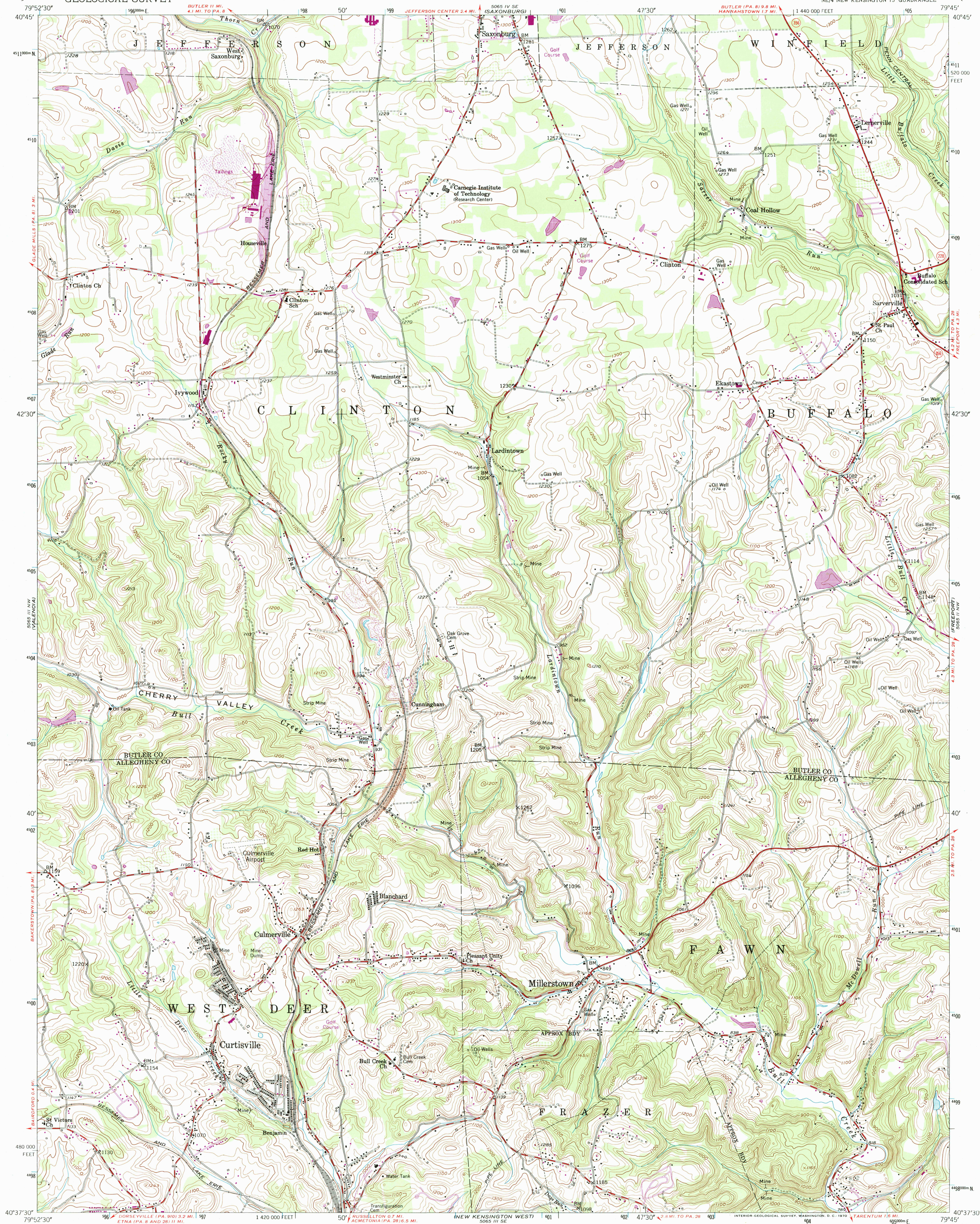
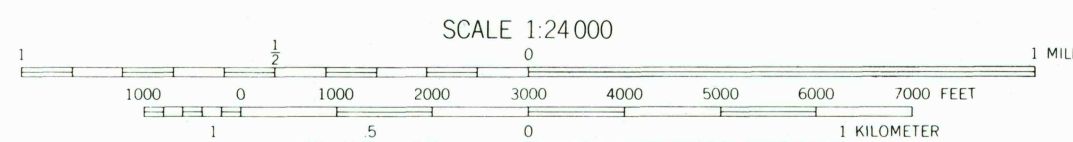
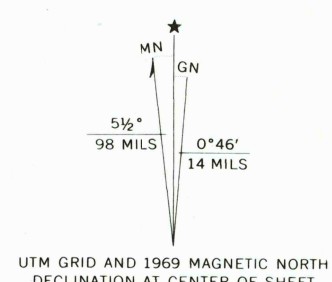


UNITED STATES  
DEPARTMENT OF THE INTERIOR  
GEOLOGICAL SURVEY

CURTISVILLE QUADRANGLE  
PENNSYLVANIA  
7.5 MINUTE SERIES (TOPOGRAPHIC)  
NE/4 NEW KENSINGTON 15' QUADRANGLE



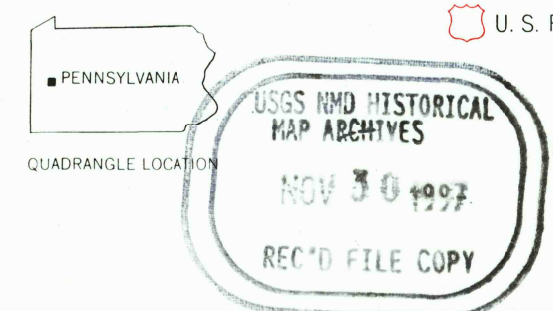
Maped, edited, and published by the Geological Survey  
Control by USGS and USC&GS  
Topography from aerial photographs by multiplex methods  
Aerial photographs taken 1952. Field check 1953  
Polyconic projection. 1927 North American datum  
10,000-foot grid based on Pennsylvania coordinate system, south zone  
1000-meter Universal Transverse Mercator grid ticks, zone 17,  
shown in blue  
Broken contours in strip mine areas indicate mining  
since photography  
Revisions shown in purple compiled in cooperation with  
State of Pennsylvania agencies from aerial photographs taken 1969  
This information not field checked



CONTOUR INTERVAL 20 FEET  
DATUM IS MEAN SEA LEVEL

THIS MAP COMPLIES WITH NATIONAL MAP ACCURACY STANDARDS  
FOR SALE BY U.S. GEOLOGICAL SURVEY, WASHINGTON, D.C. 20542  
A FOLDER DESCRIBING TOPOGRAPHIC MAPS AND SYMBOLS IS AVAILABLE ON REQUEST

ROAD CLASSIFICATION  
Heavy-duty 4 LANE 16 LANE Light-duty  
Medium-duty 4 LANE 16 LANE Unimproved dirt  
U.S. Route State Route



CURTISVILLE, PA.  
NE/4 NEW KENSINGTON 15' QUADRANGLE  
N4037 5-W7945/7.5  
1953  
PHOTOREVISED 1969  
AMS 5065 III NE-SERIES V831

ISBN 0-607-46136-5  
9 780607 461365