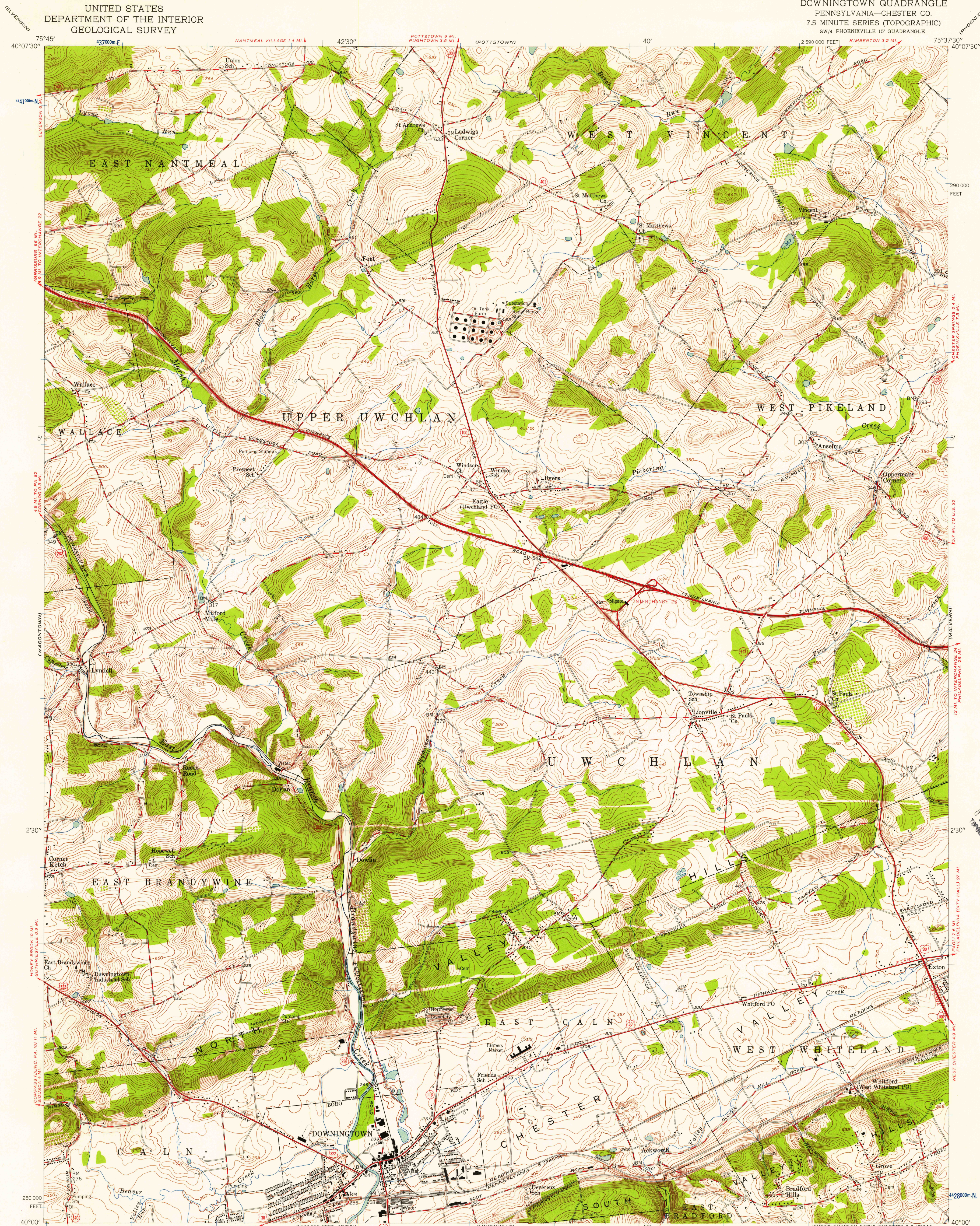


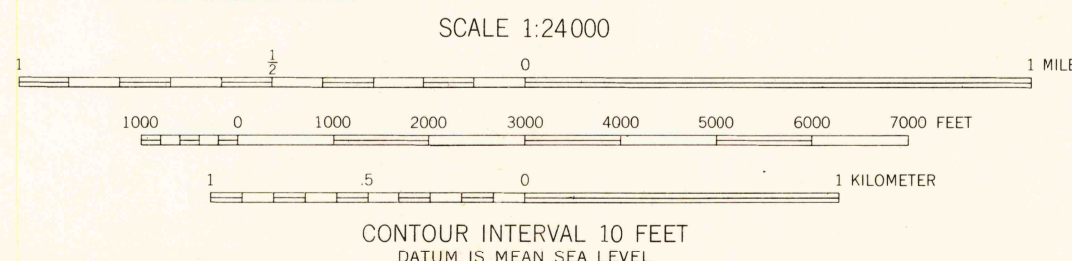
UNITED STATES
DEPARTMENT OF THE INTERIOR
GEOLOGICAL SURVEY

DOWNINGTOWN QUADRANGLE
PENNSYLVANIA—CHESTER CO.
7.5 MINUTE SERIES (TOPOGRAPHIC)
SW/4 PHOENIXVILLE 15' QUADRANGLE



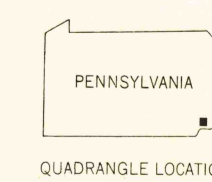
Mapped, edited, and published by the Geological Survey
Control by USGS and USC&GS
Topography from aerial photographs by Wild A-8
Aerial photographs taken 1951. Field check 1956
Polyconic projection. 1927 North American datum
10,000-foot grid based on Pennsylvania coordinate system,
south zone. 1000 meter Universal Transverse Mercator
grid ticks, zone 18, shown in blue
Unchecked elevations are shown in brown

APPROXIMATE MEAN
DECLINATION, 1956



THIS MAP COMPLIES WITH NATIONAL MAP ACCURACY STANDARDS
FOR SALE BY U. S. GEOLOGICAL SURVEY, WASHINGTON 25, D. C.
A FOLDER DESCRIBING TOPOGRAPHIC MAPS AND SYMBOLS IS AVAILABLE ON REQUEST

USGS
Historical File
Topographic Division



ROAD CLASSIFICATION
Heavy-duty ——— Light-duty ———
Medium-duty ——— Unimproved dirt ———
U. S. Route ——— State Route ———

DOWNINGTOWN, PA.
SW/4 PHOENIXVILLE 15' QUADRANGLE
N4000—W7537.5/7.5

1956

JUL 26 1957

3170