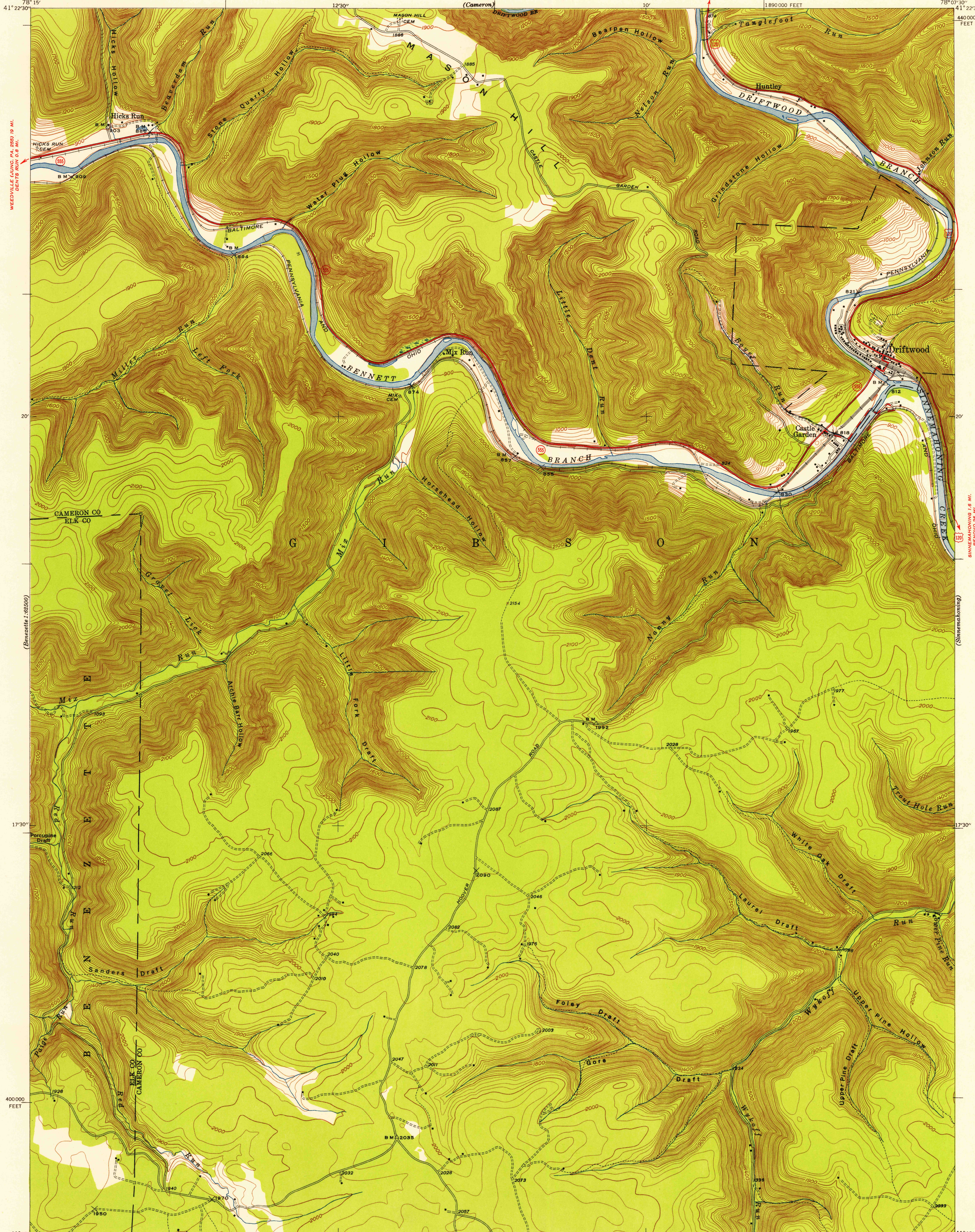


UNITED STATES  
DEPARTMENT OF THE INTERIOR  
GEOLOGICAL SURVEY

STATE OF PENNSYLVANIA  
DEPARTMENT OF INTERNAL AFFAIRS  
TOPOGRAPHIC AND GEOLOGIC SURVEY

PENNSYLVANIA  
DRIFTWOOD QUADRANGLE  
7½-MINUTE SERIES

U.S.G.S.  
FILE COPY  
TOPOGRAPHIC DIVISION



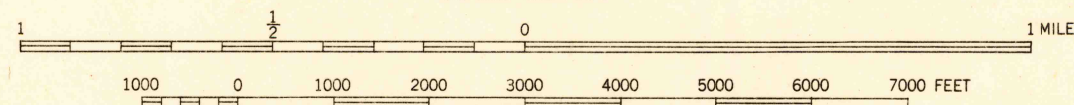
Mapped by the Geological Survey  
1945

(Karthaus 1:62,500)  
SCALE 1:24,000

INTERIOR—GEOLOGICAL SURVEY, WASHINGTON, D. C.—1945

Polyconic projection. 1927 North American datum  
10,000 foot grid based on Pennsylvania (North)  
rectangular coordinate system

**ROAD CLASSIFICATION**  
Heavy-duty ——— Light-duty ———  
Medium-duty ——— Unimproved dirt ———  
U.S. Route State Route  
APPROXIMATE MEAN  
DECLINATION, 1946



FOR SALE BY U. S. GEOLOGICAL SURVEY, WASHINGTON 25, D. C.  
A FOLDER DESCRIBING TOPOGRAPHIC MAPS AND SYMBOLS IS AVAILABLE ON REQUEST

DRIFTWOOD, PA.

N4115-W7807.5/7.5  
1945

U.S.G.S.  
FILE COPY  
TOPOGRAPHIC DIVISION  
JAN 26 1955