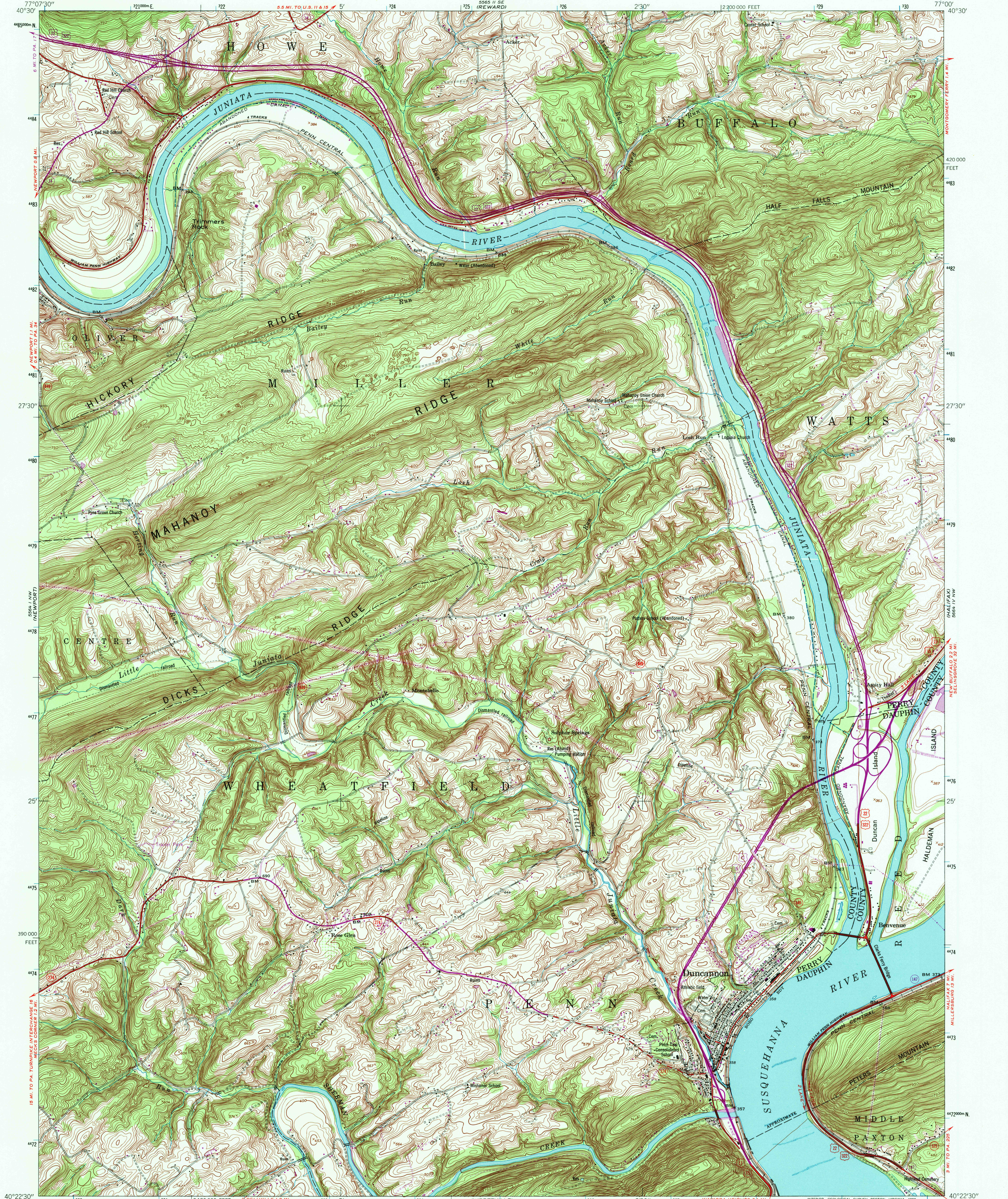


UNITED STATES  
DEPARTMENT OF THE INTERIOR  
GEOLOGICAL SURVEY

DUNCANNON QUADRANGLE  
PENNSYLVANIA  
7.5 MINUTE SERIES (TOPOGRAPHIC)  
NE/4 NEW BLOOMFIELD 15' QUADRANGLE



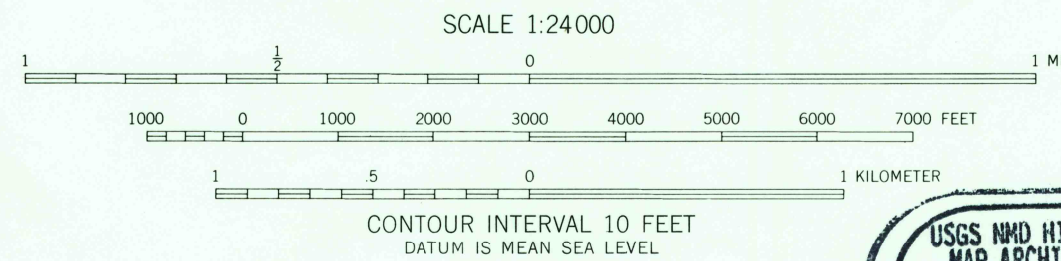
Map by the Army Map Service  
Published for civil use by the Geological Survey

Control by USGS, USC&GS, USCE, and USFS  
Topography from aerial photographs by photogrammetric methods  
Aerial photographs taken 1951. Field check 1952

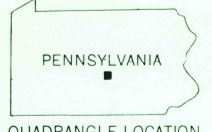
Polyconic projection. 1927 North American datum  
10,000-foot grid based on Pennsylvania coordinate system, south zone  
1000-meter Universal Transverse Mercator grid ticks,  
zone 18, shown in blue

Revisions shown in purple compiled by the Geological Survey in  
cooperation with State of Pennsylvania agencies from aerial  
photographs taken 1968 and 1973. This information not field checked

Map photoinspected 1984  
No major culture or drainage changes observed



USGS HISTORICAL  
MAP ARCHIVES  
SEP 13 1995  
REC'D FILE COPY



ROAD CLASSIFICATION  
Heavy-duty ——— Light-duty ———  
Medium-duty ——— Unimproved dirt ———  
U.S. Route ——— State Route ———

DUNCANNON, PA.  
NE/4 NEW BLOOMFIELD 15' QUADRANGLE  
N40295-W7700/7.5  
PHOTOINSPECTED 1984  
1952  
PHOTOREVISED 1968 AND 1973  
AMS 5564 1 NE-SERIES V831

