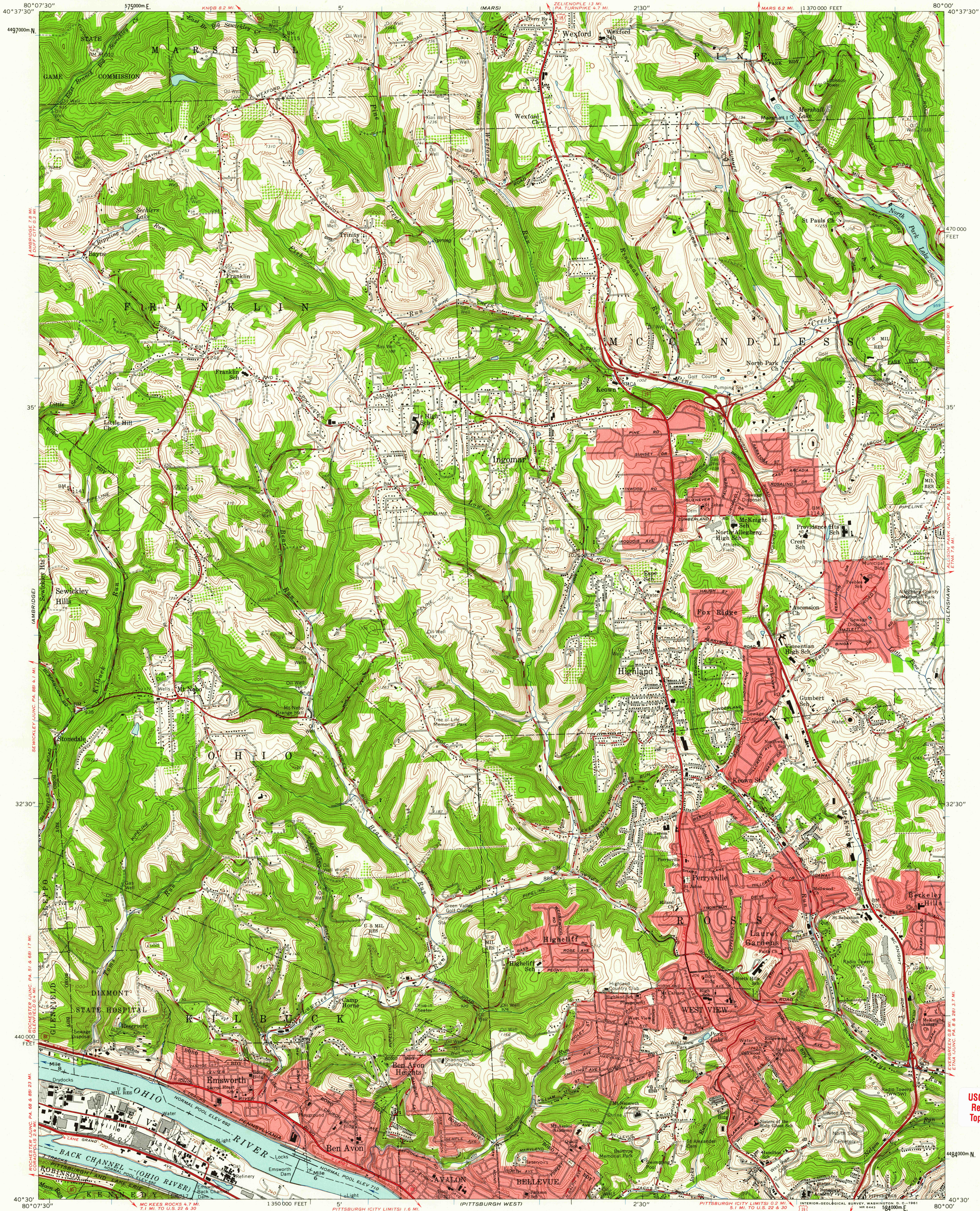


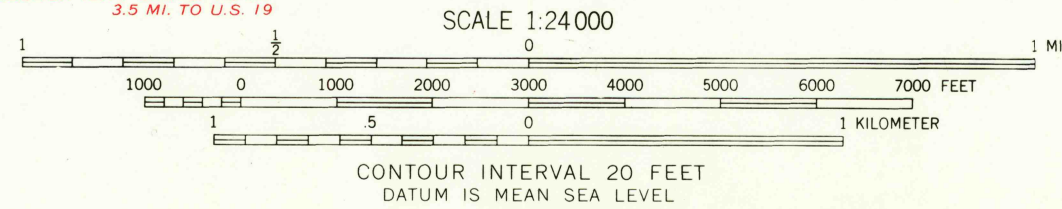
UNITED STATES
DEPARTMENT OF THE INTERIOR
GEOLOGICAL SURVEY

EMSWORTH QUADRANGLE
PENNSYLVANIA—ALLEGHENY CO.
7.5 MINUTE SERIES (TOPOGRAPHIC)
SE/4 SEWICKLEY 15' QUADRANGLE



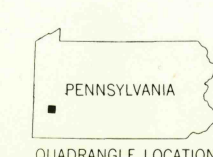
Mapped, edited, and published by the Geological Survey
Control by USGS and USC&GS
Topography from aerial photographs by photogrammetric methods
Aerial photographs taken 1952. Revised by photogrammetric methods
from aerial photographs taken 1959. Field check 1960
Polyconic projection. 1927 North American datum
10,000-foot grid based on Pennsylvania coordinate system, south zone
1000-meter Universal Transverse Mercator grid ticks,
zone 17, shown in blue
Fine red dashed lines indicate selected fence and field lines where
generally visible on aerial photographs. This information is unchecked
Red tint indicates areas in which only landmark buildings are shown

APPROXIMATE MEAN
DECLINATION, 1960

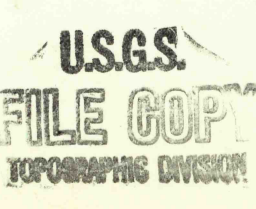


THIS MAP COMPLIES WITH NATIONAL MAP ACCURACY STANDARDS
FOR SALE BY U. S. GEOLOGICAL SURVEY, WASHINGTON 25, D. C.
A FOLDER DESCRIBING TOPOGRAPHIC MAPS AND SYMBOLS IS AVAILABLE ON REQUEST

USGS
Historical File
Topographic Division



ROAD CLASSIFICATION
Heavy-duty ——— Light-duty ———
Medium-duty ——— Unimproved dirt ———
U. S. Route ——— State Route ———



EMSWORTH, PA.
SE/4 SEWICKLEY 15' QUADRANGLE
N4030—W8000/7.5

1960

USGS Library
Reston, VA.
Topo Archive

JUN 23 1961

2485