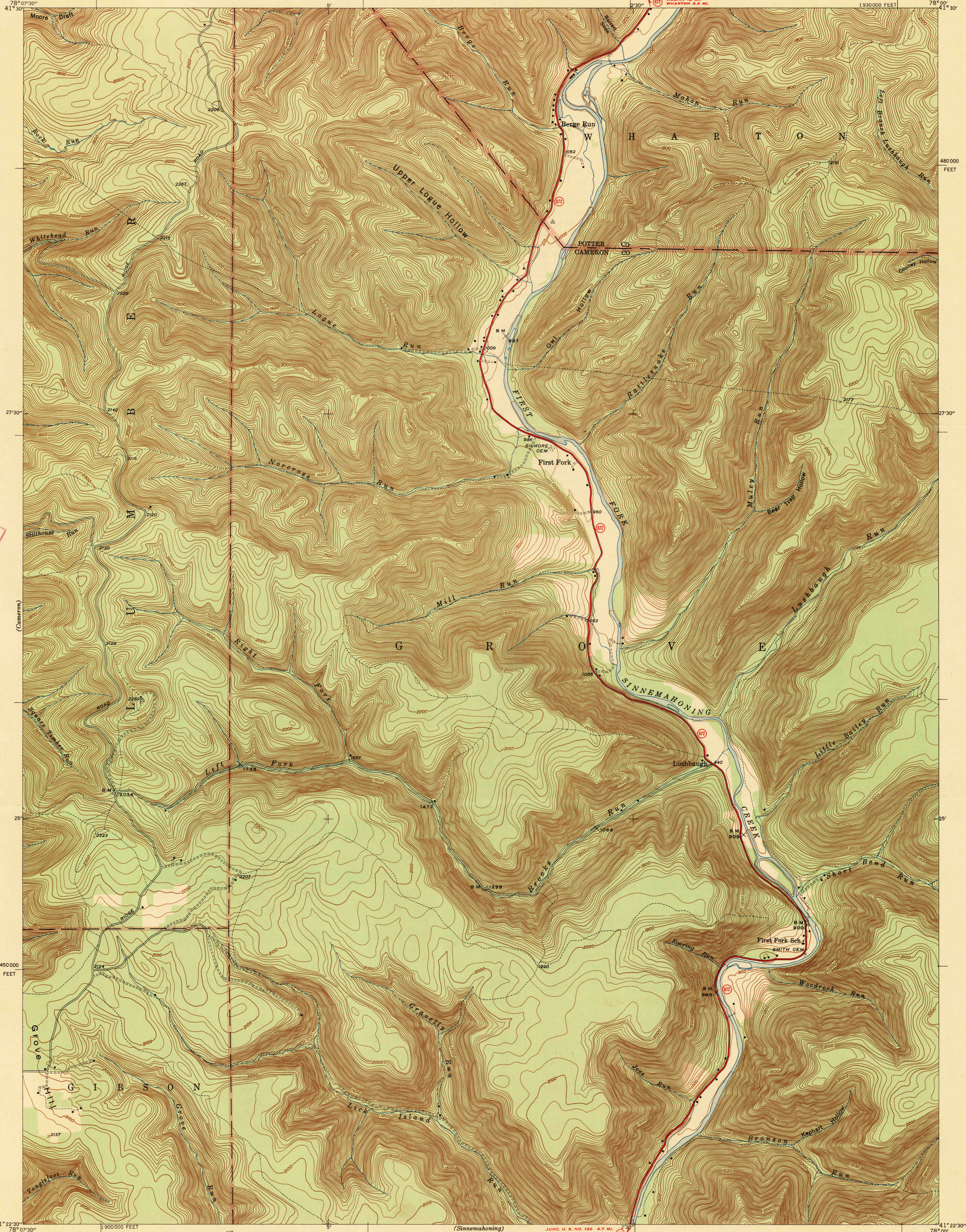


UNITED STATES  
DEPARTMENT OF THE INTERIOR  
GEOLOGICAL SURVEY

STATE OF PENNSYLVANIA  
DEPARTMENT OF INTERNAL AFFAIRS  
WILLIAM S. LIVENGOD, JR., SECRETARY  
TOPOGRAPHIC AND GEOLOGIC SURVEY  
STANLEY HOLMAN CATHCART, STATE GEOLOGIST

U. S. G. S.  
FILE COPY  
Inspection and Editing.

PENNSYLVANIA  
FIRST FORK QUADRANGLE  
7 1/2-MINUTE SERIES  
1:24,000 FEET



Mapped by the Geological Survey  
1945

ROAD CLASSIFICATION  
1947  
Dependable hard surface  
Heavy-duty road  
Secondary hard surface  
at weather road  
More than two lines indicated along road with tick at point of change  
U. S. Route  
State Route  
Dirt road  
U. S. Route  
State Route  
Dirt road

APPROXIMATE MEAN  
DECLINATION, 1946

Scale 1:24,000  
0 1000 2000 3000 4000 5000 6000 7000 8000 9000 10000  
0 1 2 3 4 5 6 7 8 9 10  
Kilometer  
Contour interval 20 feet  
Datum is mean sea level

USGS  
Historical File  
Topographic Division

U. S. G. S.  
FILE COPY  
Inspection and Editing.

Polyconic projection. 1927 North American datum  
10000 foot grid based on Pennsylvania (North)  
rectangular coordinate system

FIRST FORK, PA.  
Edition of 1947

N4122.5-W7800/7.5

NOV 14 1947

3190