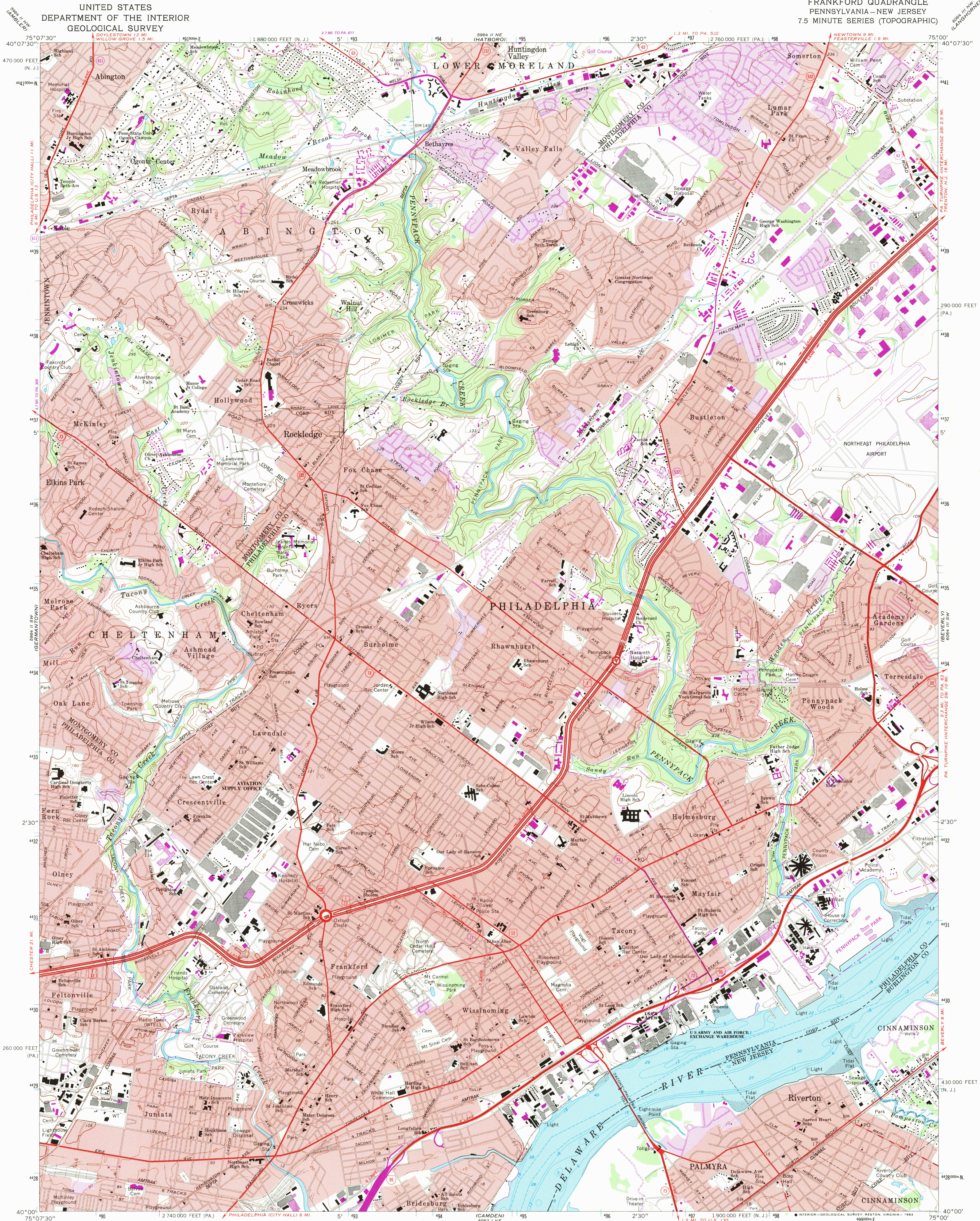


UNITED STATES  
DEPARTMENT OF THE INTERIOR  
GEOLOGICAL SURVEY

FRANKFORD QUADRANGLE  
PENNSYLVANIA-NEW JERSEY  
7.5 MINUTE SERIES (TOPOGRAPHIC)



Map by the U. S. Coast & Geodetic Survey  
Edited and published by the Geological Survey  
Control by USGS, NOS/NOAA, USCE, and  
New Jersey Geodetic Control Survey  
Planimetry by photogrammetric methods from aerial photographs  
taken 1946 and 1950. Topography by planimetric surveys 1947  
Revised by the Geological Survey from aerial photographs taken 1965  
Field checked 1967  
Selected hydrographic data compiled from NOS chart 296 (1966)  
This information is not intended for navigational purposes  
Polyconic projection. 10,000-foot grid ticks based on Pennsylvania  
coordinate system, south zone, and New Jersey coordinate system  
1000-meter Universal Transverse Mercator grid ticks,  
zone 18, shown in blue. 1927 North American Datum  
To place on the predicted North American Datum 1983  
move the projection lines 6 meters south and 32 meters  
west as shown by dashed corner ticks  
Red tint indicates areas in which only landmark buildings are shown  
There may be private inholdings within the boundaries of  
the National or State reservations shown on this map

UTM GRID AND 1983 MAGNETIC NORTH  
DECLINATION AT CENTER OF SHEET  
Revisions shown in purple and woodland compiled from  
aerial photographs taken 1981 and other sources  
This information not field checked. Map edited 1983  
Purple tint indicates extension of urban areas

SCALE 1:24,000  
1 1000 0 1000 2000 3000 4000 5000 6000 7000 FEET  
1 KILOMETER  
CONTOUR INTERVAL 20 FEET  
DOTTED LINES REPRESENT 10-FOOT CONTOURS  
NATIONAL GEODETIC VERTICAL DATUM OF 1929  
DEPTH CURVES AND SOUNDINGS IN FEET-DATUM IS MEAN LOW WATER  
THE RELATIONSHIP BETWEEN THE TWO DATUMS IS VARIABLE  
SHORELINE SHOWN REPRESENTS THE APPROXIMATE LINE OF MEAN HIGH WATER  
THE MEAN RANGE OF TIDE IS APPROXIMATELY 6 FEET  
THIS MAP COMPLIES WITH NATIONAL MAP ACCURACY STANDARDS  
FOR SALE BY U. S. GEOLOGICAL SURVEY, RESTON, VIRGINIA 22092  
A FOLDER DESCRIBING TOPOGRAPHIC MAPS AND SYMBOLS IS AVAILABLE ON REQUEST

ROAD CLASSIFICATION  
Heavy-duty ——— Light-duty ———  
Medium-duty ——— Unimproved dirt ———  
Interstate Route U.S. Route State Route  
FRANKFORD, PA. - N. J.  
40075-AI-TF-024  
1967  
PHOTOREVISED 1983  
DMA 5964 II SE-SERIES V831

RETURN TO:  
USGS AND HISTORICAL MAP ARCHIVES

3/19/84