

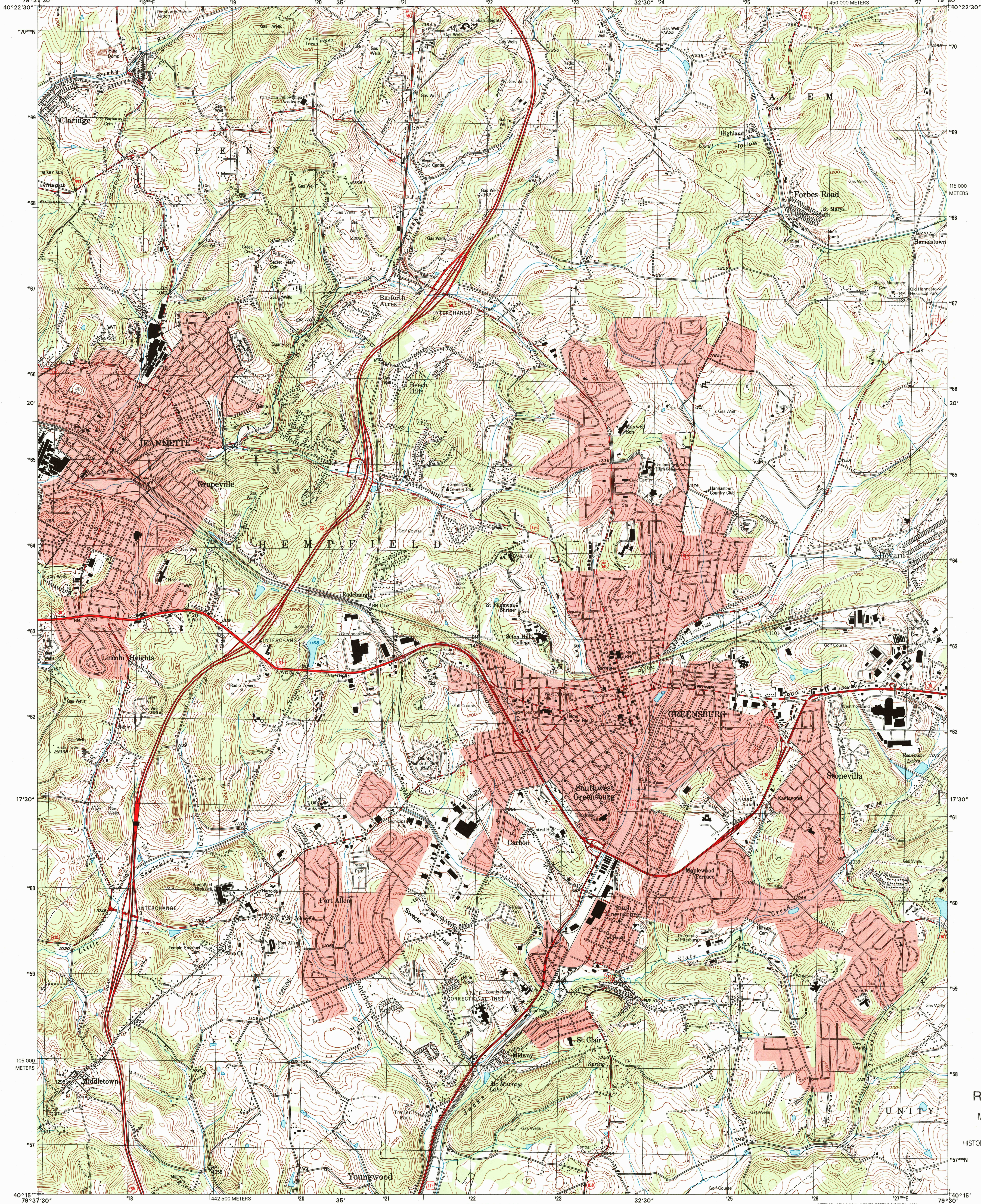


U.S. DEPARTMENT OF THE INTERIOR
U.S. GEOLOGICAL SURVEY



COMMONWEALTH OF PENNSYLVANIA
DEPARTMENT OF CONSERVATION AND NATURAL RESOURCES
BUREAU OF TOPOGRAPHIC AND GEOLOGIC SURVEY

GREENSBURG QUADRANGLE
PENNSYLVANIA-WESTMORELAND CO.
7.5-MINUTE SERIES (TOPOGRAPHIC)

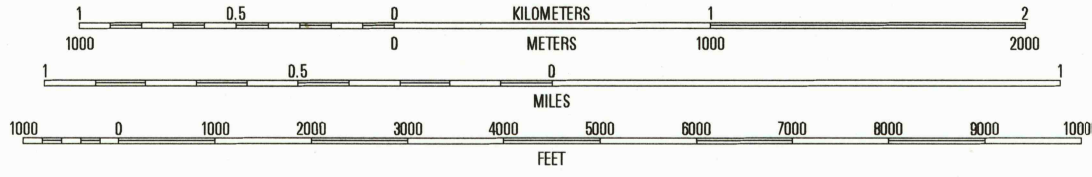
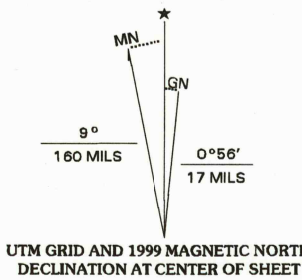


RECEIVED

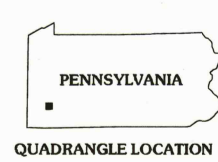
MAY 31 1999

USGS NMD
HISTORICAL MAP ARCHIVES

Produced by the United States Geological Survey
in cooperation with Pennsylvania Department of
Conservation and Natural Resources, Bureau of
Topographic and Geologic Survey
Topography compiled 1993. Planimetry derived from imagery
taken 1993 and other sources. Survey control current as of 1992
North American Datum of 1983 (NAD 83). Projection and
1 000-meter grid: Universal Transverse Mercator, zone 17
2 500-meter ticks: Pennsylvania Coordinate System of 1983
(south zone)
North American Datum of 1927 (NAD 27) is shown by dashed
corner ticks. The values of the shift between NAD 83 and
NAD 27 for 7.5-minute intersections are obtainable from
National Geodetic Survey NADCON software
There may be private inholdings within the boundaries of the
National or State reservations shown on this map
Landmark buildings verified 1992



CONTOUR INTERVAL 20 FEET
NATIONAL GEODETIC VERTICAL DATUM OF 1999
TO CONVERT FROM FEET TO METERS, MULTIPLY BY 0.3048



ROAD CLASSIFICATION
Primary highway
hard surface
Secondary highway
hard surface
Light-duty road, hard or
improved surface
Unimproved road
Interstate Route
U.S. Route
State Route

1	2	3
4	5	6
7	8	9

GREENSBURG, PA
1993

NIMA 5064 I SE-SERIES V831

