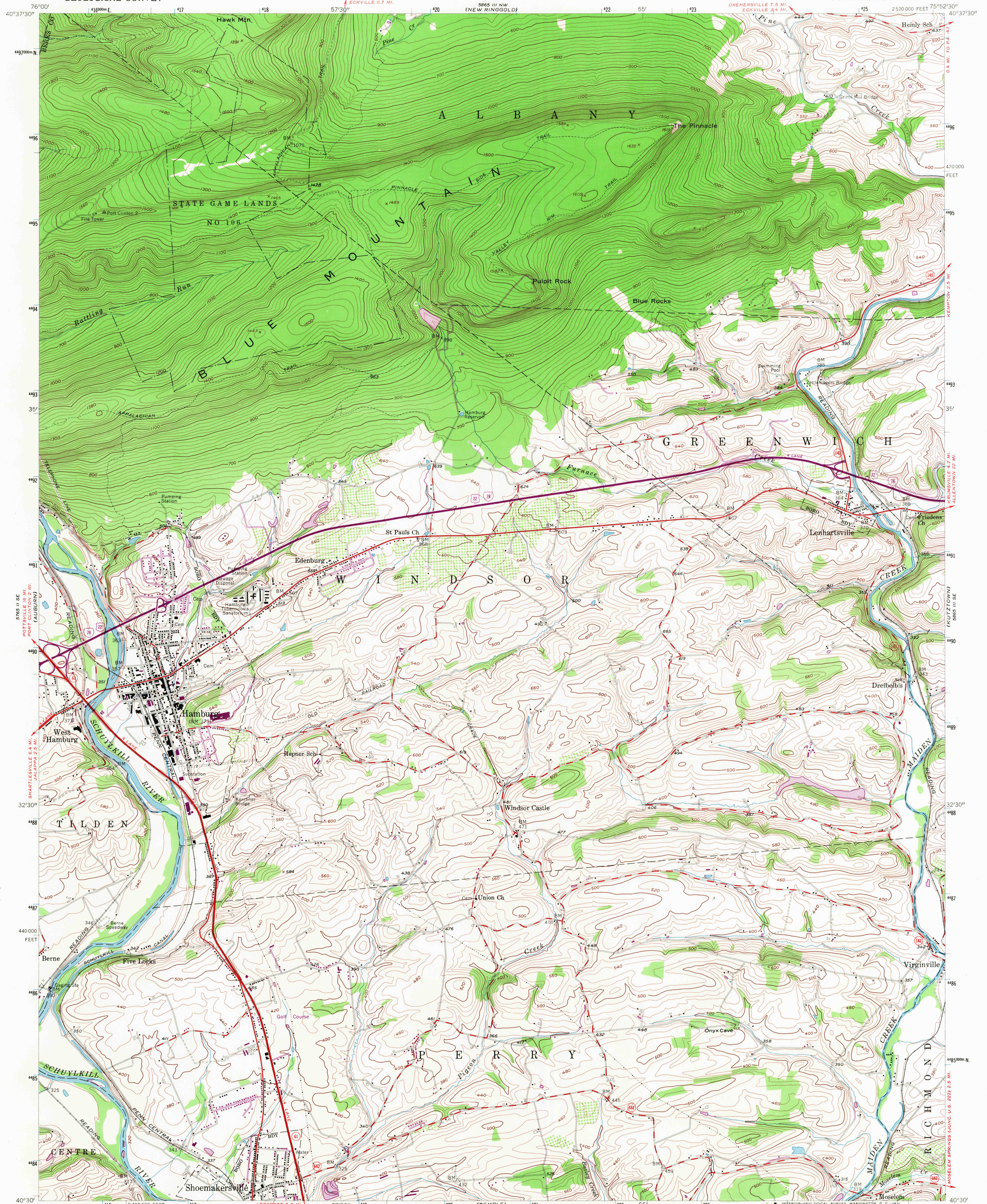


UNITED STATES
DEPARTMENT OF THE INTERIOR
GEOLOGICAL SURVEY

HAMBURG QUADRANGLE
PENNSYLVANIA—BERKS CO.
7.5 MINUTE SERIES (TOPOGRAPHIC)
SW/4 HAMBURG 15' QUADRANGLE



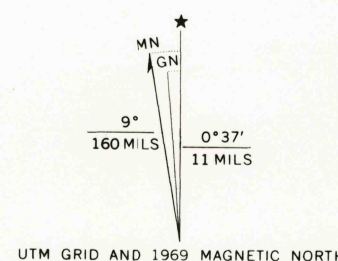
Mapped, edited, and published by the Geological Survey
Control by USGS, USC&GS, and USCE

Topography from aerial photographs by multiplex methods
Aerial photographs taken 1951. Field check 1956

Polyconic projection. 1927 North American datum
10,000-foot grid based on Pennsylvania coordinate system,
south zone
1000-meter Universal Transverse Mercator grid ticks,
zone 18, shown in blue

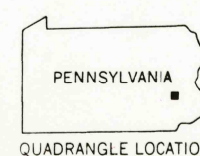
Unchecked elevations are shown in brown

Revisions shown in purple compiled in cooperation with State of
Pennsylvania agencies from aerial photographs taken 1969. This
information not field checked



CONTOUR INTERVAL 20 FEET
DATUM IS MEAN SEA LEVEL

THIS MAP COMPLIES WITH NATIONAL MAP ACCURACY STANDARDS
FOR SALE BY U.S. GEOLOGICAL SURVEY, WASHINGTON, D. C. 20242
A FOLDER DESCRIBING TOPOGRAPHIC MAPS AND SYMBOLS IS AVAILABLE ON REQUEST



ROAD CLASSIFICATION
Heavy-duty ——— Light-duty ———
Medium-duty ——— Unimproved dirt ———
U.S. Route ——— State Route ———
Interstate Route ———

HAMBURG, PA.
SW/4 HAMBURG 15' QUADRANGLE
N4030—W7552.5/7.5

1956
PHOTOREVISED 1969
AMS 5865 III SW—SERIES V831

AUG 2 1971
USGS
HISTORICAL FILE
TOPOGRAPHIC DIVISION